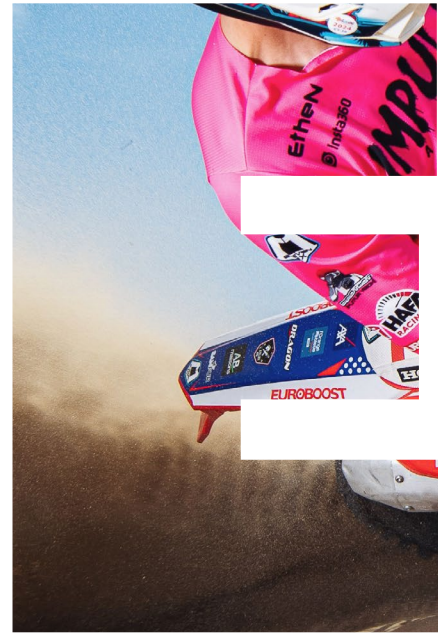




S C A R

R A C I

N G 2 5



## Since 2003, Scar has provided precision engineered, premium quality motorcycle parts and accessories.

We have produced and developed triple clamps for some of the biggest companies in motorcycling, and have equipped several manufacturers with OEM equipment.

Scar's continuous innovation gives riders high performance, premium quality products built for success at every level.

### Photo credits

Manu Fortineau: cover  
Manfe Thomas: page 62  
@align.with.us: contents page  
P.Haudiquert: page 41

Catalogue design  
thoughtandglory.com



## TITANIUM

Titanium Footpegs	2
Titanium Brake Tip	5
Titanium Footpeg Mount Bracket / Pins	6
Titanium Bolts	8

## CARBON

Carbon Rear Caliper Guard	14
Carbon Fork Wraps / Exhaust Heat Guard	15
Steel Footpegs / Springs	16
Evo Footpegs	17
Standard Footpegs	20

## HANDLEBARS

O <sup>2</sup> Graphic Colour Handlebars	21
X <sup>2</sup> Crossbar / O <sup>2</sup> Handlebars	25
O <sup>2</sup> Handlebars / S <sup>2</sup> Handlebars	26
Bar Pads / Bar Clamp / Donuts	27
Grips / Clean Grip Cover	28

## TRIPLE CLAMPS

Triple Clamps APEX	29
Bar Mounts APEX / Triple Clamps	30
Bar Mounts	32
Bar Rise Kit / Rubber Killers	34
Flex Levers	35
Pivot Clutch Lever Assembly / Levers OEM Type	38
Gear Pedals	40
Replacement Shift Tip / Rear Brake Pedals	43

## FRONT SPROCKET

Aluminium Sprocket	44
Sprocket bolts and nuts / Rear Disc Guard	45
Throttle Tubes	47
Launch Control	48
Axle Pull / Axle Blocks	49
Engine Plugs / Oil Filler Plugs	51
Oil Drain Plug / Brake Clevis	53
Brake Line Clamp / Reservoir Covers	54
Reservoir Cooling Extension / Steering Nut	56
Front Axle Bolt	59
Clutch Cable Guide / Wheel Spacers	61
Fuel Mixture Screw	62
Vent Cap / Aluminium Washers / Hour Meters	63
/ Exhaust Heat Protector	64

## WORKSHOP

WP Valve Tool	65
Fork Cap Wrench	66
Fork Air Pumps / Fork Air Bleeder Valves / Air Valve Puller	67
Lift Stand/Bike Stands/Spoke Wrench/Display Stand	68

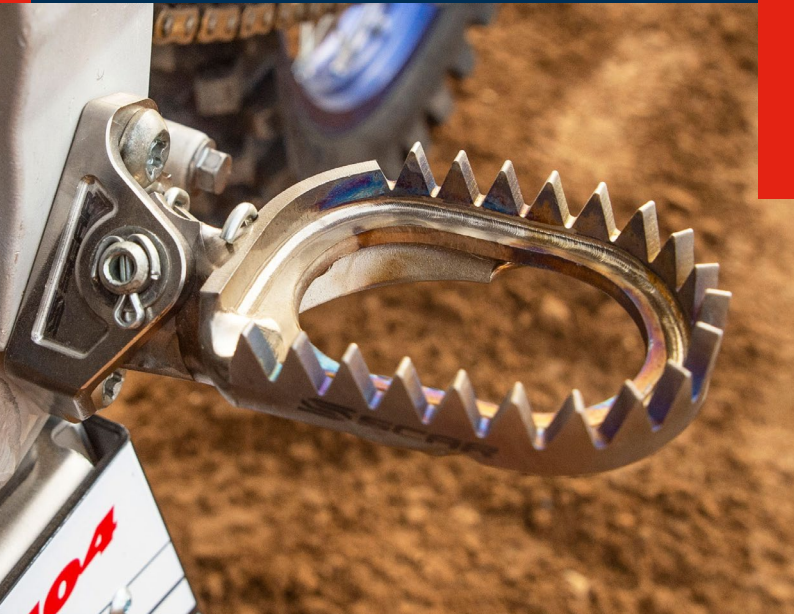
## CASUAL

Umbrella / Keyring / T-shirt / Hat / Cap/ Beanie	69
--	----



# TITANIUM

# IUM



## TITANIUM FOOTPEGS

- › Aerospace-grade titanium and strong welding
- › The body of the footpegs is 60mm wide — 10mm wider than OEM
- › Ultra light-weight at approx 350g per pair for Gripper model and 300g for Anti-Mud model
- › Premium quality and high performance
- › Each set is hand fabricated
- › 19 teeth (Anti-Mud model) for extra strength and extra grip / 27 teeth (Gripper model)
- › Used by our factory racing teams



YAMAHA	YEARS	GRIPPER	ANTI-MUD		
YZ65	18-25	S1516	S1516AM		
YZ85	02-25				
YZ125/250	97-25				
YZ250F	01-23				
YZ250F	24-25	S1517	S1517AM		
YZ450F	03-22	S1516	S1516AM		
YZ450F	23-25	S1517	S1517AM		
YZ125X	17-25	S1516	S1516AM		
YZ250X	16-25				
YZ250FX	15-24				
YZ250FX	2025			S1517	S1517AM
YZ450FX	16-23	S1516	S1516AM		
YZ450FX	24-25	S1517	S1517AM		
WR250F	01-24	S1516	S1516AM		
WR250F	2025	S1517	S1517AM		
WR450F	99-23	S1516	S1516AM		
WR450F	24-25	S1517	S1517AM		
TENERE700	20-25	S1516	S1516AM		
HONDA	YEARS	GRIPPER	ANTI-MUD		
CR125R/250R	02-07	S2516	S2516AM		
CRF150R	07-25				
CRF250R	04-25				
CRF450R	02-25				
CRF250L/M	12-25				
CRF250RX	19-25				
CRF450RX	17-25				
CRF250X	04-17				
CRF450X	05-25				
CRF250RALLY	17-19				
CRF300L/300 RALLY	21-22				
CRF450L	19-20				
CRF450RL	21-25				
CRF250RW/450RW	2025				
CRF1000L AFRICA TWIN	18-19				
CRF1100L AFRICA TWIN	20-21				
KAWASAKI	YEARS			GRIPPER	ANTI-MUD
KX250F	06-18			S3516	S3516AM
KX250	19-25				
KX450F	07-18				
KX450	19-25				
KX250X	21-25				
KX450X	21-25				
SUZUKI	YEARS	GRIPPER	ANTI-MUD		
RMZ250	10-25	S4516	S4516AM		
RMZ450	08-25 (not 2011)				
RMX450Z	10-17				
KTM	YEARS	GRIPPER	ANTI-MUD		
50SX	98-23	S5516	S5516AM		
SX-E 5	20-24	S5516	S5516AM		
65SX	98-23	S5516	S5516AM		
85SX	98-17	S5516	S5516AM		
85SX	18-24	S5517	S5517AM		
85SX	2025	S5518	S5518AM		

KTM	YEARS	GRIPPER	ANTI-MUD	
250SX	04-16	S5516	S5516AM	
250EXC/300EXC				
250/350/450/500EXCF				
150EXC TPI	20-23	S5517	S5517AM	
250EXC TPI	18-23			
300EXC TPI	18-23			
250SX	17-23			
250EXC/300EXC	04-15	S5516	S5516AM	
250/350/450/500EXCF				
125/150 SX				
250/350/450 SXF	16-22	S5517	S5517AM	
125/150SX				
250/350/450 SXF	23-25	S5518	5518AM	
125SX				
150SX				2025
250/300SX				23-25
250/350/450SXF				23-25
125/250/300EXC				24-25
250/350/450/500EXCF				24-25
300EXC SIX DAYS				24-25
350EXCF SIX DAYS				24-25
450EXCF SIX DAYS				24-25
500EXCF SIX DAYS	24-25			
125/300XC	23-25	S5518	S5518AM	
250/350/450XCF				
125XCW	2025	S5516	S5516AM	
250/300/450XCW	24-25			
350/500XWF	24-25			
150XC	10-14			
200XC	06-09			
250/300XC	06-15			
250XCF	07-15			
350XCF	12-15			
450XCF	08-15			
200/250/300XCW	06-16			
450XCW	07-16	S5517	S5517AM	
500XCW	12-16			
250XCW	07-16			
350XCW	12-16			
125XC	21-22			
250XC	2018			
250XC TPI	20-22	S5517	S5517AM	
300XC	17-19			
300XC TPI	20-22			
250/300/350/450XCF	16-22			
150XCW	17-23			
150XCW TPI	20-23			
250XCW	18-23			
300XCW	17-23			
300XCW TPI	20-23	S5517	S5517AM	
350XCW	20-22			
500XCW	20-22			

# TITANIUM FOOTPEGS CONT'D

HUSQVARNA	YEARS	GRIPPER	ANTI-MUD
TC50	17-24	S5516	S5516AM
EE 5	20-24		
TC65	17-24		
TC85	14-17		
TC85	18-24	S5517	S5517AM
TC85	2025	S5518	S5518AM
TE125/250/300	14-16	S5516	S5516AM
TC250			
FE250/350/450/501			
TC125	14-15	S5516	S5516AM
FC250/350/450			
TC125	16-22	S5517	S5517AM
FC250/350/450			
TX125	17-19	S5518	S5518AM
TC250	17-22		
TX300	17-22		
FX350	17-22		
FX450	17-22		
TE150i	20-23		
TE250i	18-23		
TE300i	18-23		
TE250/300	17-23		
FE250/350/450/501			
FS450	17-22		
TC125/250	23-25		
TC150	2025		
TC300	2025		
FC250/350/450	23-25		
TX300	23-25		
FX350/450	23-25		
FS450			
TE125	2025		
TE150/250/300	23-25		
FE250/350/450/501			
GAS GAS	YEARS	GRIPPER	ANTI-MUD
MC-E 5	21-23	S5516	S5516AM
MC50/65			
MC85	21-24	S5517	S5517AM
MC85	2025	S5518	S5518AM
MC125	21-23	S5517	S5517AM
MC250	22-23		
MC250F	21-23		
MC350F	22-23		
MC450F	21-23		
EC250/300			

GAS GAS	YEARS	GRIPPER	ANTI-MUD
EC250F/350F	21-23	S5517	S5517AM
EX250	22-23		
EX300	21-23		
EX250F/350F/450F		S5518	S5518AM
MC125/250	24-25		
MC150/300	2025		
MC250F/350F/450F	24-25		
EC125	2025		
EC250/300	24-25		
EC250F			
EC350F			
EC450F			
EC500F			
EX250/300			
EX250F/350F/450F			
SHERCO	YEARS	GRIPPER	ANTI-MUD
125SE/SER	18-25	S5516	S5516AM
250SE/SER	08-25		
300SE/SER			
250SEF/SEFR			
300SEF/SEFR			
450SEF/SEFR			
125SM	20-25		
500SM	20-25		
BETA	YEARS	GRIPPER	ANTI-MUD
RR125	18-19	S5516	S5516AM
RR200	2019		
RR250	05-19		
RR300			
RR350			
RR390			
RR430			
RR480			
XTRAINER 250/300	15-25		
RR125	20-25		
RR200			
RR250			
RR300			
RR350			
RR390			
RR430			
RR480			
HUSABERG	YEARS	GRIPPER	ANTI-MUD
FE250/350/501	08-14	S5516	S5516AM
FX450			
TE250/300			

# TITANIUM FOOTPEGS CONT'D

ALTA	YEARS	GRIPPER	ANTI-MUD
REDSHIFT EXR	16-19	S1516	S1516AM
REDSHIFT MXR	16-19		
REDSHIFT MX	16-19		
REDSHIFT EX	16-19		
REDSHIFT SM	16-19		
STARK FUTURE	YEARS	GRIPPER	ANTI-MUD
Varg	23-25	S8516	S8516M
TRIUMPH	YEARS	GRIPPER	ANTI-MUD
TF250-X	24-25	S9516	S9516M

FANTIC	YEARS	GRIPPER	ANTI-MUD
XX125	21-25	S1516	S1516AM
XE125			
XX250	22-25		
XXF250	24-25	S1517	S1517AM
XXF250/450	22-23	S1516	S1516AM
XXF450	23-25	S1517	S1517AM
XEF250/450	22-23	S1516	S1516AM
XEF250/450	2025	S1517	S1517AM

# TITANIUM BRAKE TIP

- › Aerospace-grade Ti-6AL-4V titanium and strong welding
- › Super grippy full titanium tip
- › Ultra lightweight
- › Premium quality and high performance
- › Longer than OEM
- › Eliminate the risk of brake loss



KTM	YEARS	PART
65SX	24-25	STBT500
85SX	18-25	
125/150SX	16-25	
250SX	17-25	
300SX	23-25	
250/350/450SXF	16-25	
250/300EXC	17-25	
150EXC TPI	20-25	
250/300EXC TPI	18-25	
250/350/450/500EXCF	17-25	
125XC	21-25	
250XC	18-25	
250XC TPI	21-25	
300XC	17-25	
300XC TPI	20-22	
250/350/450XCF	16-25	
125XCW	2025	
150XCW	17-25	
250XCW	17-25	
250XCW TPI	18-22	
300XCW	17-25	

KTM	YEARS	PART
300XCW TPI	19-22	STBT500
350XCFW	20-22	
450XCFW	23-25	
65SX	09-23	STBT499
85SX	03-17	
105SX	04-11	
125SX	04-15	
150SX	09-15	
250SX	03-16	
250SXF	05-15	
350SXF	11-15	
450SXF	07-15	
125EXC	05-16	
150EXC	10-14	
200/250/300EXC	04-16	
250EXCF	05-16	
350EXCF	12-16	
450EXCF	09-16	
500EXCF	12-16	
450SMR	04-14	
FREERIDE 250R	14-17	

KTM	YEARS	PART
FREERIDE 350	12-17	STBT499
105XC	08-09	
150XC	10-14	
200XC	06-09	
250/300XC	06-14	
200/250/300XCW	06-16	
400XCW	07-13	
450XCW	07-16	
500XCW	12-16	
250XCF	07-15	
350XCF	12-15	
450XCF	08-15	
250XCFW	07-16	
350XCFW	12-16	
390 ADVENTURE	20-24	
690 SMC R	19-24	
690 ENDURO R	10-24	
790 ADVENTURE	19-24	
890 ADVENTURE	21-24	
950 ADVENTURE	03-06	
950 SUPER ENDURO R	06-10	

# TITANIUM BRAKE TIP CONT'D

KTM	YEARS	PART	
990 ADVENTURE	06-12	STBT499	
1090 ADVENTURE	17-19		
1190 ADVENTURE	13-16		
1290 SUPER ADVENTURE	15-24		
HUSQVARNA	YEARS	PART	
TC65	24-25	STBT500	
TC85	18-25		
TC125	16-25		
TC150	2025		
TC250	17-25		
FC250/350/450	16-25		
FS450	17-25		
TX125	17-19		
TX300	17-25		
TE125	2025		
TE150	18-25		
TE250/300	17-25		
TE150i	20-25		
TE250i/300i	18-25		
FE250/350/450/501	17-25		
FX350/450			
TC65	17-23		STBT499
TC85	14-17		
TC125	14-15		
TC250	14-16		
FC250/350/450	14-15		
TE125	15-16		
TE250/300	14-16		

HUSQVARNA	YEARS	PART	
FE250/350/450	14-16	STBT499	
701 ENDURO	16-25		
701 SUPERMOTO	16-25		
GASGAS	YEARS	PART	
MC65	21-23	STBT499	
MC65	24-25	STBT500	
MC85	21-25		
MC125			
MC150	2025		
MC250	22-25		
MC250F	21-25		
MC350F	22-25		
MC450F	21-25		
EC125	2025		
EC250/300	21-25		
EC250F/350F			
EC450F/500F	24-25		
EX250	22-25		
EX300	21-25		
EX250F/350F/450F	21-25		
EC125/200/250/300	13-15		STBT499
EC250F/300F	12-18		
EC450F	12-15		
BETA	YEARS	PART	
RR125	18-25	STBT499	
RR200	19-25		
RR250	15-25		
RR300			

BETA	YEARS	PART
RR350	11-25	STBT499
RR390	15-25	
RR430	16-25	
RR480		
XTRAINER	15-25	
SHERCO	YEARS	PART
125SE / SER	18-25	STBT499
250SE / SER	12-25	
300SE / SER		
250SEF / SEFR		
300SEF / SEFR		
450SEF / SEFR		
HUSABERG	YEARS	PART
TE250/300	12-13	STBT499
FE250/350	2013	
FE390	2010	
FE450	09-10	
FE501	2013	
FE570	09-11	
FS570	2011	
FX450	2010	

# TITANIUM FOOTPEG MOUNT BRACKETS

- › Aerospace-grade Ti-6AL-4V titanium
- › CNC machined
- › Special design to prevent mud getting into the brackets
- › Half the weight of stock mount



YAMAHA	YEARS	PART
YZ125	06-25	STFMB151
YZ250	06-25	

YAMAHA	YEARS	PART
YZ250F	08-23	STFMB152
YZ450F	08-22	
YZ250FX	15-23	
YZ450FX	16-23	

FANTIC	YEARS	PART
XXF250	22-23	STFMB152
XXF450	22-23	
XX125	21-25	STFMB151
XX250	22-25	



# FOOTPEGS PINS

- › Steel with self-locking flange nuts
- › Impervious to corrosion
- › Will not rust or discolor
- › Improved strength and durability
- › Quick & easy installation



YAMAHA	YEARS	PART	
YZ125/250	97-25	SFP100	
YZ250F	01-25		
YZ450F	03-25		
YZ125X	17-25		
YZ250X	16-25		
YZ250FX	15-25		
YZ450FX	16-25		
WR250F	01-25		
WR450F	99-25		
<b>HONDA</b>	<b>YEARS</b>		<b>PART</b>
CR125R/250R	02-07	SFP200	
CRF150R	07-25		
CRF250R	04-25		
CRF450R	02-25		
CRF250RX	19-25		
CRF450RX	17-25		
CRF250X	04-17		
CRF450X	05-25		
<b>KAWASAKI</b>	<b>YEARS</b>		<b>PART</b>
KX250F	06-18		SFP200
KX250	19-25		
KX450F	07-18		
KX450	19-25		
KX250X/450	21-25		
<b>KTM</b>	<b>YEARS</b>	<b>PART</b>	
50/65/85SX	04-25	SFP500	
125/150SX			
250/300SX			
250/350/450SXF			
125/250/300EXC			
150EXC TPI			
250EXC TPI			
300EXC TPI			
250/350/450EXCF			
500EXCF			
125/300XC			
250/350/450XCF			
250XCW			
300XCW			

KTM	YEARS	PART
450XCW	04-25	SFP500
350XWF		
500XWF		
<b>HUSQVARNA</b>	<b>YEARS</b>	<b>PART</b>
TC50	14-25	SFP500
TC65	17-25	
TC85		
TC125		
TC250		
FC250		
FC350		
FC450		
TX125		
TX300		
TE150		
TE150i		
TE250		
TE250i		
TE300		
TE300i		
FE250		
FE350		
FE450		
FE501		
FX350		
FX450		
<b>GASGAS</b>	<b>YEARS</b>	<b>PART</b>
MC-E 5	21-25	SFP500
MC50		
MC65		
MC85		
MC125		
MC150	2025	
MC250	22-25	
MC300	2025	
MC250F	21-25	
MC350F	22-25	
MC450F	21-25	
EC125	2025	

GASGAS	YEARS	PART
EC250	21-25	SFP500
EC300		
EC250F/350F		
EC450F/500F	24-25	
<b>GASGAS</b>	<b>YEARS</b>	<b>PART</b>
EX250/300	21-25	SFP500
EX250F/350F/450F	21-25	
<b>SHERCO</b>	<b>YEARS</b>	<b>PART</b>
125SE / SER	08-25	SFP600
250SE / SER		
300SE / SER		
250SEF / SEFR		
300SEF / SEFR		
450SEF / SEFR		
<b>BETA</b>	<b>YEARS</b>	<b>PART</b>
RR125	05-25	SFP500
RR200		
RR250		
RR300		
RR350		
RR390		
RR430		
RR480		
XTRAINER 250/300		
<b>FANTIC</b>	<b>YEARS</b>	<b>PART</b>
XX125	21-25	SFP100
XE125		
XX250	22-25	
XXF250/450		
XEF250/450		
<b>HUSABERG</b>	<b>YEARS</b>	<b>PART</b>
FE250/350/501	04-14	SFP500
FX450		
TE250/300		
<b>TRIUMPH</b>	<b>YEARS</b>	<b>PART</b>
TF250-X	24-25	SFP500

# TITANIUM ENGINE BOLT KIT



- › Aerospace-Grade Ti-6AL-4V Titanium
- › M8 and M6 bolts available
- › CNC Machined
- › Half the weight of steel equivalent

## TITANIUM ENGINE BOLT KIT

YAMAHA	YEARS	QTY	PART
YZ65	18-25	35	STIMENGYZ65
YZ85	02-25	32	STIMENGYZ85
YZ125	05-21	39	STIMENGYZ125
	22-25	39	STIMENGYZ125B
YZ250	05-25	43	STIMENGYZ250
YZ250F	19-25	50	STIMENGYZ250F
YZ450F	14-19	50	STIMENGYZ450F
	20-22	49	STIMENGYZ450F2
	23-25	43	STIMENGYZ450F3
HONDA	YEARS	QTY	PART
CRF250R	18-21	48	STIMENGCRF250
	22-25	44	STIMENGCRF250B
CRF450R	17-20	48	STIMENGCRF450
	21-25	48	STIMENGCRF450B
KAWASAKI	YEARS	QTY	PART
KX250F	11-20	42	STIMENGMKX250F
KX250	21-25	43	STIMENGMKX250
KX450	19-25	47	STIMENGMKX450
KTM	YEARS	QTY	PART
65SX	09-25	34	STIMENG65SX
85SX	18-25	39	STIMENG85SX
125SX	16-22	42	STIMENG125SX
	23-25	40	STIMENG125SX2
150SX	2025	40	STIMENG125SX2
250SX	17-22	49	STIMENG250SX
	23-25	47	STIMENG250SX2
300SX	23-25	47	STIMENG250SX2
250SXF	16-22	41	STIMENG250SXF
	23-25	39	STIMENG250SXF2
350SXF	16-22	41	STIMENG250SXF
450SXF	23-25	39	STIMENG250SXF2
	16-18	41	STIMENG450SXF
	19-22	36	STIMENG450SXF2
	23-25	44	STIMENG450SXF3
150EXC TPI	20-23	45	STIMENG150EXC
150EXC	24-25	38	STIMENG150EXC2
250EXC	18-19	48	STIMENG250EXC
250EXC TPI	20-23	52	STIMENG250EXC2
250EXC	24-25	50	STIMENG250EXC3

KTM	YEARS	QTY	PART
300EXC	18-19	48	STIMENG250EXC
300EXC TPI	20-23	52	STIMENG250EXC2
300EXC	24-25	50	STIMENG250EXC3
250EXCF	17-19	43	STIMENG250EXCF
	20-23	41	STIMENG250EXCF2
	24-25	43	STIMENG250EXCF3
350EXCF	17-19	43	STIMENG250EXCF
	20-23	41	STIMENG250EXCF2
	24-25	43	STIMENG250EXCF3
450EXCF	20-23	40	STIMENG450EXCF
450EXCF	24-25	41	STIMENG450EXCF2
500EXCF	20-23	40	STIMENG450EXCF
500EXCF	24-25	41	STIMENG450EXCF2
125XCW	2025	40	STIMENG125SX2
HUSQVARNA	YEARS	QTY	PART
TC65	16-25	34	STIMENG65SX
TC85	18-25	39	STIMENG85SX
TC125	16-22	42	STIMENG125SX
	23-25	40	STIMENG125SX2
TC150	2025	40	STIMENG125SX2
TC250	17-22	49	STIMENG250SX
	23-25	47	STIMENG250SX2
TC300	2025	47	STIMENG250SX2
FC250	18-22	41	STIMENG250SXF
	23-25	39	STIMENG250SXF2
FC350	18-22	41	STIMENG250SXF
	23-25	39	STIMENG250SXF2
FC450	16-22	41	STIMENG450SXF
	23-25	44	STIMENG450SXF3
TE125	2025	40	STIMENG125SX2
TE150	24-25	38	STIMENG150EXC2
TE150	20-23	45	STIMENG150EXC
TE250	18-19	48	STIMENG250EXC
TE250i	20-23	52	STIMENGETE250i
TE250	24-25	50	STIMENG250EXC3
TE300	18-19	48	STIMENG250EXC
TE300i	20-23	52	STIMENGETE250i
TE300	24-25	50	STIMENG250EXC3
FE250	17-19	43	STIMENG250EXCF

HUSQVARNA	YEARS	QTY	PART
FE250	20-23	41	STIMENG250EXCF2
	24-25	43	STIMENG250EXCF3
FE350	17-19	43	STIMENG250EXCF
	20-23	41	STIMENG250EXCF2
	24-25	43	STIMENG250EXCF3
FE450	20-23	40	STIMENG450EXCF
FE450	24-25	41	STIMENG450EXCF2
FE501	20-23	40	STIMENG450EXCF
FE501	24-25	41	STIMENG450EXCF2
GAS GAS	YEARS	QTY	PART
MC65	21-25	34	STIMENG65SX
MC85	21-25	39	STIMENG85SX
MC125	21-23	42	STIMENG125SX
MC125	23-25	40	STIMENG125SX2
MC150	2025	40	STIMENG125SX2
MC250	22-23	49	STIMENG250SX
MC250	23-25	47	STIMENG250SX2
MC300	2025	47	STIMENG250SX2
MC250F	21-23	41	STIMENG250SXF
MC250F	23-25	39	STIMENG250SXF2
MC350F	22-23	41	STIMENG250SXF
MC350F	23-25	39	STIMENG250SXF2
MC450F	21-23	36	STIMENG450SXF2
MC450F	23-25	44	STIMENG450SXF3
EC125	2025	40	STIMENG125SX2
EC250	21-23	52	STIMENG250EXC2
EC250	24-25	50	STIMENG250EXC3
EC300	21-23	52	STIMENG250EXC2
EC300	24-25	50	STIMENG250EXC3
EC250F	21-23	41	STIMENG250EXCF2
EC250F	24-25	43	STIMENG250EXCF3
EC350F	21-23	41	STIMENG250EXCF2
EC350F	24-25	43	STIMENG250EXCF3
EC450F	24-25	41	STIMENG450EXCF2
EC500F	24-25	41	STIMENG450EXCF2
FANTIC	YEARS	QTY	PART
XX125	2021	39	STIMENGYZ125
	22-24	39	STIMENGYZ125B
XE125	21-24	39	STIMENGYZ125
XX250	22-24	43	STIMENGYZ250
XXF250	22-23	50	STIMENGYZ250F
XXF450	22-23	49	STIMENGYZ450F2
XEF250	22-23	50	STIMENGYZ250F
XEF450	22-23	49	STIMENGYZ450F2
TRIUMPH	YEARS	QTY	PART
TF250-X	24-25	41	STIMENG250TFX

# TITANIUM FRONT END BOLT KIT



- › Aerospace-Grade Ti-6AL-4V Titanium
- › M8 and M6 bolts available
- › CNC Machined
- › Half the weight of steel equivalent

## TITANIUM FRONT END BOLT KIT

YAMAHA	YEARS	QTY	PART
YZ125	15-22	18	STIMFRYZ125
	23-25	18	STIMFRYZ125B
YZ125X	2023	18	STIMFRYZ125B
YZ250	15-22	18	STIMFRYZ125
	23-25	18	STIMFRYZ125B
YZ250X	2023	18	STIMFRYZ125B
YZ250F	08-20	18	STIMFRYZF250
YZ450F	08-19	18	STIMFRYZF250
YZ250F	21-25	18	STIMFRYZF450
YZ250FX	21-25	18	STIMFRYZF450
YZ450F	20-25	18	STIMFRYZF450
YZ450FX	20-25	18	STIMFRYZF450
HONDA	YEARS	QTY	PART
CR125R	02-07	18	STIMFRCR125
CR250R	02-07	18	STIMFRCR125
CRF250R	18-21	18	STIMFRCRF250
	22-25	18	STIMFRCRF450
CRF450R	17-20	18	STIMFRCRF250
	21-25	18	STIMFRCRF450
KAWASAKI	YEARS	QTY	PART
KX250F	06-24	18	STIMFRKXF250
KX450F	15-23	18	STIMFRKXF250
KTM	YEARS	QTY	PART
65SX	17-20	15	STIMFR65SX
	21-25	15	STIMFR65SX2
85SX	16-25	13	STIMFR85SX
125/150SX	15-25	19	STIMFRSXF
250/300SX		19	STIMFRSXF
250/350SXF		19	STIMFRSXF
450SXF	16-25	19	STIMFRSXF
250EXCF SIXDAYS	16-23	19	STIMFRSXF
350EXCF SIXDAYS	16-23	19	STIMFRSXF
450EXCF SIXDAYS	16-23	19	STIMFRSXF
150EXC TPI	20-23	19	STIMFREXCF
150/250EXC	24-25	19	STIMFRSXF
250EXC TPI	18-23	19	STIMFREXCF
300EXC TPI	18-23	19	STIMFREXCF
300EXC	24-25	19	STIMFRSXF
250EXC	16-18	19	STIMFREXCF

KTM	YEARS	QTY	PART
300EXC	16-23	19	STIMFREXCF
250/350EXCF	16-23	19	STIMFREXCF
250/350EXCF	24-25	19	STIMFRSXF
450EXCF	16-23	19	STIMFREXCF
	24-25	19	STIMFRSXF
500EXCF	24-25	19	STIMFRSXF
HUSQVARNA	YEARS	QTY	PART
TC65	17-20	15	STIMFR65SX
TC65	21-25	15	STIMFR65SX2
TC85	16-25	13	STIMFR85SX
TC125/250	14-25	19	STIMFRSXF
		19	STIMFRSXF
		19	STIMFRSXF
FC250/350			
FC450			
TE125	14-23	19	STIMFRSXF
TE125	2025	19	STIMFRSXF
TE150/250	14-25	19	STIMFRSXF
TE150i	20-23	19	STIMFRSXF
TE250i	18-23	19	STIMFRSXF
TE300i	18-22	19	STIMFRSXF
TE300	14-25	19	STIMFRSXF
TX300	17-25	19	STIMFRSXF
FE250/350	14-25	19	STIMFRSXF
		19	STIMFRSXF
FE450/501			
FX350/450	17-25	19	STIMFRSXF
SHERCO	YEARS	QTY	PART
125/250SE	18-25	19	STIMFRSHER
		19	STIMFRSHER
300SE			
250/300SEF			
450SEF			
GAS GAS	YEARS	QTY	PART
MC65	21-25	15	STIMFR65SX2
MC85	21-25	13	STIMFR85SX
MC125	21-25	19	STIMFREXCF
	2024	19	STIMFRSXF
MC150	2025	19	STIMFRSXF
MC250	22-25	19	STIMFREXCF
	24-25	19	STIMFRSXF
MC300	2025	19	STIMFRSXF
MC250F	21-25	19	STIMFREXCF
	24-25	19	STIMFRSXF
MC350F	22-25	19	STIMFREXCF

GAS GAS	YEARS	QTY	PART
MC350F	24-25	19	STIMFRSXF
MC450F	21-23	19	STIMFREXCF
	24-25	19	STIMFRSXF
EC250/300	21-23	19	STIMFREXCF
EC250/300	24-25	19	STIMFRSXF
EC250F/350F	21-23	19	STIMFREXCF
EC250F/350F	24-25	19	STIMFRSXF
EC450F	24-25	19	STIMFRSXF
FANTIC	YEARS	QTY	PART
XX125	21-25	18	STIMFRYZ125
XX250	22-25	18	STIMFRYZ125
XXF250		18	STIMFRYZF450
XXF450		18	STIMFRYZF450
XE125	21-25	18	STIMFRYZ125
XXEF250	22-25	18	STIMFRYZF450
XXEF450		18	STIMFRYZF450
TRIUMPH	YEARS	QTY	PART
TF 250-X	24-25	19	STIMFRTEFX

# TITANIUM BOLTS

- › Aerospace-Grade Ti-6AL-4V Titanium
- › M8 and M6 bolts available
- › CNC Machined
- › Half the weight of steel equivalent



## BAR MOUNT BOLT KIT

HONDA	YEARS	PART
CRF250R	04-20	STIM8X35-04
CRF450R	02-20	
CRF250RX	19-20	
CRF450RX	17-20	
CRF450L	19	
CRF250X	04-17	
CRF450X	05-20	
CR125R	02-07	
CR250R	02-07	
CRF150R	07-20	STIM8X30-04
CR85R	03-07	
CRF250L	12-19	STIM8X35-04
CRM250R	94-98	
XR230/Motard	05-13	
XR250/Motard	03-07	
YAMAHA	YEARS	PART
YZ250F	01-20	STIM8X35-04
YZ400F	98-99	
YZ426F	00-02	
YZ450F	03-20	
YZ250FX	15-19	STIM8X35-04
YZ450FX	16-19	
WR250F	01-20	
WR400F	98-00	
WR426F	01-02	
WR450F	03-20	
YZ125	95-06	
YZ125	07	STIM8X40-04
YZ125	08-14	
YZ125	15-20	
YZ250	95-06	STIM8X35-04
YZ250	07	STIM8X40-04
YZ250	08-14	
YZ250	15-20	
YZ125X	17-20	
YZ250X	16-20	
WR250R	07-20	STIM8X35-04
YZ85	02-20	STIM8X30-04
YZ65	18-20	STIM8X35-04

## BAR MOUNT BOLT KIT

KAWASAKI	YEARS	PART
KX250F	04-05	STIM8X30-04
KX250F	06-20	STIM8X35-04
KX450F	06-20	
KX125	03-05	STIM8X30-04
KX125	06-08	STIM8X35-04
KX250	03-05	STIM8X30-04
KX250	06-08	STIM8X35-04
KX85	01-13	STIM8X30-04
KX85	14-20	STIM8X35-04
KX100	16-20	
KLX250	98-07	STIM8X30-04
KLX250	08-16	
D-Tracker 125	10-15	
KLX125	10-16	
SUZUKI	YEARS	PART
RMZ250	04-06	STIM8X30-04
RMZ250	07-20	STIM8X35-04
RMZ450	05-20	
RM125	01	STIM8X40-04
RM125	02-08	STIM8X35-04
RM250	01-08	STIM8X35-04
DRZ400S	00-17	
DRZ400SM	05-06	
DRZ400SM	07-17	STIM8X40-04
RM85	02-12	STIM8X35-04
KTM	YEARS	PART
50SX	06-20	STIM8X30-04
65SX	10-20	
85SX	03-12	
85SX	13-20	STIM8X25-04
125SX	10-20	
150SX	10-20	
250SX	09-20	
250SXF	10-20	
350SXF	11-20	
250EXC	12-20	
300EXC	12-20	
450SXF	09-20	
250EXCF	12-20	
350EXCF	12-20	

## BAR MOUNT BOLT KIT

KTM	YEARS	PART
450EXCF	12-20	STIM8X25-04
250EXCF 6 DAYS	12-20	
350EXCF 6 DAYS	12-20	
450EXCF 6 DAYS	12-20	
FREERIDE250R	14-20	
FREERIDE350	12-17	
690SMCR	12-17	
1090ADVENTURE	17	
1290SUPERADVENTURE	15-17	
690ENDUROR	09-17	
690DUKE	08-17	STIM8X30-04
1290SUPERDUKE	14-17	
HUSQVARNA	YEARS	PART
TC50	17-20	STIM8X30-04
TC65	17-20	
TC85	14-20	STIM8X25-04
TC125	14-20	
TC250	14-20	
FC250	14-20	
FC350	14-20	
FC450	14-20	
TE125	14-16	
TX125	17-20	
TE150	17	
TE250	14-20	
TE300	14-20	
FE250	14-20	
FE350	14-20	STIM8X25-04
FE450	14-20	
FE501	14-20	
FS450	14-20	
701SUPERMOTO	16-20	
SHERCO	YEARS	PART
125SER	18-20	STIM8X25-04
250SER	15-20	
300SER	15-20	
250SEFR	15-20	
300SEFR	15-20	
450SEFR	15-20	

# TITANIUM BOLTS CONT'D

## TOP TRIPLE CLAMP BOLT KIT

HONDA	YEARS	PART
CRF250R	04-20	STIM8X45-04
CRF450R	02-20	
CRF250RX	19-20	
CRF450RX	17-20	
CRF250X	04-17	
CRF450X	05-20	
CR125R	02-07	
CR250R	02-07	
CRF150R	07-20	STIM8X35-02
CR85R	03-07	
CRF250L	12-16	STIM8X45-04
CRM250R	94-98	
XR230/Motard	05-13	
XR250/Motard	03-07	STIM8X50-04
YAMAHA	YEARS	PART
YZ250F	01-05	STIM8X40-04
YZ250F	06	STIM8X35-04
YZ250F	07-20	
YZ400F	98-99	STIM8X40-04
YZ426F	00-02	
YZ450F	03-05	
YZ450F	06	STIM8X35-04
YZ450F	07	
YZ450F	08-20	
YZ250FX	15-20	
YZ450FX	16-20	
WR250F	01-06	STIM8X40-04
WR250F	07-20	STIM8X35-04
WR400F	98-00	STIM8X40-04
WR426F	01-02	
WR450F	03-06	
WR450F	07-20	STIM8X35-04
YZ125	95-06	STIM8X40-04
YZ125	07	
YZ125	08-14	
YZ125	15-20	
YZ250	95-06	
YZ250	07	
YZ250	08-14	
YZ250	15-20	
YZ125X	17-20	
YZ250X	16-20	
WR250R	07-20	
YZ85	02-14	STIM8X35-02
YZ85	15-20	STIM8X40-02
YZ65	18-20	
SEROW250	05-16	STIM8X40-04

## TOP TRIPLE CLAMP BOLT KIT

KAWASAKI	YEARS	PART
KX250F	04-05	STIM8X35-04
KX250F	06-20	STIM8X40-04
KX450F	06-14	
KX450F	15-20	
KX125	03-05	STIM8X35-04
KX125	06-08	STIM8X40-04
KX250	03-04	STIM8X35-04
KX250	05	STIM8X40-04
KX250	06-08	
KX85	01-13	STIM8X35-02
KX85	14-20	
KX100	16-20	
KLX250	98-07	STIM8X40-04
KLX250	08-16	
D-Tracker125	10-15	STIM8X35-02
KLX125	10-16	
SUZUKI	YEARS	PART
RMZ250	04-06	STIM8X35-04
RMZ250	07-15	STIM8X40-04
RMZ250	16-20	STIM8X45-04
RMZ450	05-20	STIM8X40-04
RM125	01	
RM125	02-08	
RM250	01-08	
DRZ400S	00-17	STIM8X50-04
DRZ400SM	05-06	STIM8X40-04
DRZ400SM	07-19	
RM85	02-04	
RM85	05-12	
KTM	YEARS	PART
50SX	12-20	STIM8X30-03
65SX	10-20	
85SX	03-20	
125SX	10-20	STIMTOPSXF
150SX	10-20	
250SX	10-20	
250SXF	10-20	
350SXF	11-20	
450SX-F	10-20	
250EXC	12-20	STIMTOPEXCF
300EXC	12-20	
250EXCF	12-20	
350EXCF	12-20	
450EXCF	12-20	
250EXCF 6 DAYS	12-20	STIMTOPSXF
350EXCF 6 DAYS	12-20	
450EXCF 6 DAYS	12-20	

## TOP TRIPLE CLAMP BOLT KIT

KTM	YEARS	PART
690DUKE	08-17	STIM8X30-02
1290SUPERDUKE	14-17	
HUSQVARNA	YEARS	PART
TC50	17-20	STIM8X30-03
TC65	17-20	
TC85	14-20	
TC125	14-20	STIMTOPSXF
TC250	14-20	
FC250	14-20	
FC350	14-20	
FC450	14-20	
TE125	14-16	
TX125	17-20	
TE150	17	
TE250	14-20	
TE300	14-20	
FE250	14-20	
FE350	14-20	
FE450	14-20	
FE501	14-20	
FS450	14-20	
701SUPERMOTO	16-20	
SHERCO	YEARS	PART
125SER	18-20	STIMTOPSHER
250SER	15-20	
300SER	15-20	
250SEFR	15-20	
300SEFR	15-20	
450SEFR	15-20	
HONDA	YEARS	PART
CRF250R	04-17	STIM8X45-04
CRF450R	02-16	
CRF250R	18-20	STIM8X40-04
CRF450R	17-20	
CRF250RX	19-20	
CRF450RX	17-20	
CRF250X	04-17	STIM8X45-04
CRF450X	05-17	
CR125R/250R	02-07	
CRF150R	07-20	STIM8X40-04
CR85R	03-07	
CRF250L	12-16	STIM8X45-04
CRM250R	94-98	STIM8X40-04
XR230/Motard	05-13	STIM8X35-04
XR250/Motard	03-07	STIM8X40-04

## BOTTOM TRIPLE CLAMP KIT

HONDA	YEARS	PART
CRF250R	04-17	STIM8X45-04
CRF450R	02-16	
CRF250R	18-20	STIM8X40-04
CRF450R	17-20	
CRF250RX	19-20	
CRF450RX	17-20	
CRF250X	04-17	STIM8X45-04
CRF450X	05-17	
CR125R/250R	02-07	
CRF150R	07-20	STIM8X40-04
CR85R	03-07	
CRF250L	12-16	STIM8X45-04
CRM250R	94-98	STIM8X40-04
XR230/Motard	05-13	STIM8X35-04
XR250/Motard	03-07	STIM8X40-04

# TITANIUM BOLTS CONT'D

## BOTTOM TRIPLE CLAMP KIT

YAMAHA	YEARS	PART
YZ250F	01-05	STIM8X40-04
YZ250F	06	
YZ250F	07-20	STIM8X35-04
YZ400F	98-99	STIM8X40-04
YZ426F	00-02	
YZ450F	03-05	
YZ450F	06	
YZ450F	07	STIM8X35-04
YZ450F	08-20	
YZ250FX	15-20	
YZ450FX	16-20	
WR250F	01-06	STIM8X40-04
WR250F	07-14	
WR250F	15-20	STIM8X35-04
WR450F	03-06	STIM8X40-04
WR450F	07-15	
WR450F	16-20	STIM8X35-04
YZ125	95-06	STIM8X40-04
YZ125	07	
YZ125	08-14	
YZ125	15-20	STIM8X35-04
YZ250	95-06	STIM8X40-04
YZ250	07	
YZ250	08-14	
YZ250	15-20	STIM8X35-04
YZ125X	17-20	
YZ250X	16-18	
WR250R	07-18	STIM8X40-04
YZ85	02-14	
YZ85	15-20	
YZ65	18-20	STIM8X40-04
SEROW250	05-16	STIM8X35-04
KAWASAKI	YEARS	PART
KX250F	04-05	STIM8X40-04
KX250F	06-20	STIM8X45-04
KX450F	06-14	STIM8X40-04
KX450F	15-20	STIM8X45-04
KX125	03-05	STIM8X40-04
KX125	06-08	
KX250	03-04	
KX250	05	
KX250	06-08	
KX85	01-13	
KX85	14-20	
KX100	16-20	
KLX250	98-07	STIM8X40-02
KLX250	08-16	

## BOTTOM TRIPLE CLAMP KIT

KAWASAKI	YEARS	PART
D-Tracker125	10-15	STIM8X35-04
KLX230	2020	STIM8X40-04
KLX125	10-16	STIM8X35-02
SUZUKI	YEARS	PART
RMZ250	04-06	STIM8X40-04
RMZ250	07-15	
RMZ250	16-20	STIM8X45-04
RMZ450	05-20	STIM8X40-04
RM125	01	
RM125	02-08	
RM250	01-08	
DRZ400S	00-17	STIM8X45-04
DRZ400SM	05-06	STIM8X40-04
DRZ400SM	07-19	
RM85	02-04	
RM85	05-12	
KTM	YEARS	PART
50SX	12-20	STIM8X30-04
65SX	10-20	
85SX	03-20	
125SX	10-20	STIM8X50-04
150SX	10-20	
250SX	10-20	
250SXF	10-20	
350SXF	11-20	
450SXF	10-20	
250EXC	12-20	STIM8X30-04
300EXC	12-20	
250EXCF	12-20	
350EXCF	12-20	
450EXCF	12-20	STIM8X30-04
250EXCF 6 DAYS	14-20	STIM8X50-04
350EXCF 6 DAYS	14-20	
450EXCF 6 DAYS	14-20	
FREERIDE250R	14-20	STIM8X40-04
FREERIDE350	12-17	
690SMCR	12-17	
1090ADVENTURE	17	STIM8X35-04
1290SUPERADVENTURE	15-17	
690ENDUROR	09-17	STIM8X40-04
690DUKE	08-17	STIM8X30-04
1290SUPERDUKE	14-17	
HUSQVARNA	YEARS	PART
TC50	17-20	STIM8X30-04
TC65	17-20	
TC85	14-20	
TC125	14-20	STIM8X50-04

## BOTTOM TRIPLE CLAMP KIT

HUSQVARNA	YEARS	PART
TC250	14-20	STIM8X50-04
FC250	14-20	
FC350	14-20	
FC450	14-20	
TE125	14-16	
TX125	17-20	
TE150	17	
TE250	14-20	
TE300	14-20	
FE250	14-20	
FE350	14-20	
FE450	14-20	
FE501	14-20	
FS450	14-20	
701 SUPERMOTO	16-20	STIM8X40-04
SHERCO	YEARS	PART
125SER	18-20	STIM8X35-04
250SER	15-20	
300SER	15-20	
250SEFR	15-20	
300SEFR	15-20	
450SEFR	15-20	

## FORK GUARD MOUNT BOLT KIT

HONDA	YEARS	PART
CR85R	03-07	STIM6FPCR-06
CRF150R	07-20	
CR125R	97-07	
CR250R	97-07	
CRF250R	04-23	
CRF450R	02-23	
CRF250X	04-17	
CRF450X	05-20	STIM6FPCR-06
CRF250RX	19-23	
CRF450RX	17-23	
YAMAHA	YEARS	PART
YZ65	18-23	STIM6FPYZ-06
YZ125	08-23	
YZ125X	20-23	
YZ250	08-23	
YZ250X	16-23	
YZ250F	08-23	
YZ250FX	15-23	
YZ450F	08-23	
YZ450FX	16-23	
WR250F	20-23	
WR450F	20-23	

# TITANIUM BOLTS CONT'D

## FORK GUARD MOUNT BOLT KIT

KTM	YEARS	PART
50SX	12-23	STIM6FPKT-06
SX-E 5	20-23	
65SX	04-23	
85SX	03-23	
125SX	00-23	
150SX		
250SX		
250SXF		
350SXF		
450SXF		
250EXC		
300EXC		
250EXCF		
350EXCF		
450EXCF		
250EXCF SIX DAYS		
350EXCF SIX DAYS		
450EXCF SIX DAYS		
690SMCR		
690ENDUROR		

## FORK GUARD MOUNT BOLT KIT

HUSQVARNA	YEARS	PART		
TC50	17-23	STIM6FPKT-06		
EE 5	20-23			
TC65	17-23			
TC85	14-23			
TC125/250				
FC250/350/450				
TE125				
TX125	14-23			
TE150			STIM6FPKT-06	
TE250				
TE300				
FE250				
FE350				
FE450				
FE501				
GASGAS		YEARS		PART
MC65		21-23		STIM6FPKT-06
MC85				
MC125				
MC250				

## FORK GUARD MOUNT BOLT KIT

GASGAS	YEARS	PART
MC250F	21-23	STIM6FPKT-06
MC350F		
MC450F		
EC250		
EC300		
EC250F		
EC350F	YEARS	PART
TRIUMPH		
TF250-X	2024	STIM6FPKT-06

## KIT CONTENTS

PART	CONTENTS
STIM8X15-01	M8 x 15 Qty:1
STIM8X15-02	M8 x 15 Qty:2
STIM8X20-01	M8 x 20 Qty:1
STIM8X20-02	M8 x 20 Qty:2
STIM8X25-01	M8 x 25 Qty: 1
STIM8X25-04	M8 x 25 Qty: 4
STIM8X30-01	M8 x 30 Qty: 1
STIM8X30-02	M8 x 30 Qty: 2
STIM8X30-03	M8 x 30 Qty: 3
STIM8X30-04	M8 x 30 Qty: 4
STIM8X35-01	M8 x 35 Qty:1
STIM8X35-02	M8 x 35 Qty:2
STIM8X35-04	M8 x 35 Qty: 4
STIM8X40-01	M8 x 40 Qty: 1
STIM8X40-02	M8 x 40 Qty: 2
STIM8X40-04	M8 x 40 Qty: 4
STIM8X45-01	M8 x 45 Qty: 1
STIM8X45-04	M8 x 45 Qty: 4
STIM8X50-01	M8 x 50 Qty: 1
STIM8X50-04	M8 x 50 Qty: 4
STIMTOPSXF	M8 x 40 Qty: 4 / M8 x 25 Qty: 1
STIMTOPEXCF	M8 x 30 Qty: 4 / M8 x 35 Qty: 1
STIMTOPSHER	M8 x 35 Qty: 4 / M8 x 25 Qty: 1

## TITANIUM NUTS

PART	CONTENTS
STINM8-04	M8 Nut qty:4
STINM8-06	M8 Nut qty:6



# CARBON



## CARBON REAR CALIPER GUARD

- › Made of carbon fibre
- › Protect rear brake caliper from rocks and impacts



YAMAHA	YEARS	PART
YZ125	06-21	CRCG100
YZ250	06-21	
YZ125	22-25	CRCG300
YZ250	22-25	
YZ250F	06-20	CRCG100
	21-25	CRCG300
YZ450F	06-19	CRCG100
	20-25	CRCG300
YZ125X	17-22	CRCG100
	23-25	CRCG300
YZ250X	16-22	CRCG100
	23-25	CRCG300
YZ250FX	15-21	CRCG100
	22-25	CRCG300
YZ450FX	16-20	CRCG100
	21-25	CRCG300
WR250F	06-23	CRCG100
WR450F	06-23	

YAMAHA	YEARS	PART
WR250R	07-19	CRCG100
WR250X	07-17	
HONDA	YEARS	PART
CR125R	02-07	CRCG200
CR250R	02-07	
CRF150R	07-25	
CRF250R	04-25	
CRF450R	02-25	
CRF250RX	19-25	
CRF450RX	17-25	
CRF250X	04-17	
CRF450X	05-23	
KAWASAKI	YEARS	PART
KX250F	04-21	CRCG300
KX250	20-24	
KX450F	06-21	
KX450	20-23	
KX250X	21-24	

KAWASAKI	YEARS	PART
KX450X	21-23	CRCG300
SUZUKI	YEARS	PART
RM125	05-08	CRCG400
RM250	05-08	
RMZ250	07-25	
RMZ450	05-25	
RMX450Z	10-17	
DRZ400SM	04-17	
FANTIC	YEARS	PART
XX125	2021	CRCG100
	22-25	CRCG300
XX250		
XXF250		
XXF450		
XXF450		
XE125	21-22	CRCG100
XEF250	2022	
XEF450	2022	



## FORK WRAPS LOWER

- › Made of carbon fibre
- › Protect your front fork outer tube from rocks
- › Easy installation
- › Sold in pairs

MODEL	PART
For big bikes (125/250/450/500) Dimensions 240x52mm	SFWLB
For Small bike (85) Dimensions 220x45mm	SFWLS



## FORK WRAPS UPPER

- › Made of carbon fibre
- › Protect your front fork outer tube from rocks
- › Easy installation
- › Sold in pairs

MODEL	PART
For big bikes (125/250/450/500) Dimensions 160x52mm	SFWUB



## CARBON EXHAUST HEAT GUARD

- › Rounded design universal heat protector for 4 stroke exhaust header pipes
- › Made of carbon fibre
- › Fits exhaust pipe diameters from 27mm to 51mm
- › Dimensions: 190 x 50mm
- › Perfect for aftermarket pipes that are not supplied with a heat shields
- › Comes with all mounting hardware (2 clamping collars serflex type)

MODEL	PART
Universal	CUHP



# STEEL FOOTPEGS

- › Made in forged steel
- › Extra grip
- › The body of the footpegs is 60 mm wide
- › High performance
- › Indestructible
- › Anti-mud design



KTM	YEARS	BLACK
85SX	2025	SF5818
125/250/300SX	23-25	
150SX	2025	
250/350/450SXF	23-25	
125/300XC	24-25	
250/350/450XCF		
125/250/300EXC		
250/350/450/500EXCF		
300EXC SIX DAYS		
350EXCF SIX DAYS	2025	
450EXCF SIX DAYS		
500EXCF SIX DAYS		
125XCW		
250/300/450XCW	24-25	
350/500XWF	2025	
<b>HUSQVARNA</b>		
TC85		2025
TC125/250		23-25
TC150/300	2025	

HUSQVARNA	YEARS	BLACK	
FC250/350/450	23-25	SF5818	
TX300			
FX350/450	23-25		
FS450			
TE125			
TE150/250/300	24-25		
FE250/350/450/501			
<b>GASGAS</b>			<b>BLACK</b>
MC85	2025		SF5818
MC125/250	24-25		
MC150/300	2025		
MC250F/350F/450F	24-25		
EC250/300			
EC250F/350F			
EC450F/500F			
EX250/300	2025		
EX250F/350F/450F			

# SPRINGS FOR FOOTPEGS

- › Stainless steel spring
- › Sold individually



YAMAHA	YEARS	SIDE	PART
YZ250F	24-25	LEFT	SY23L
		RIGHT	SY23R
YZ450F	23-25	LEFT	SY23L
		RIGHT	SY23R
YZ250FX	2025	LEFT	SY23L
		RIGHT	SY23R
YZ450FX	24-25	LEFT	SY23L
		RIGHT	SY23R
WR250F	2025	LEFT	SY23L
		RIGHT	SY23R
WR450F	24-25	LEFT	SY23L
		RIGHT	SY23R

# EVO FOOTPEGS

- › Original Scar design
- › 57mm width — 25% wider than OEM
- › 18 sharp-head stainless steel teeth
- › Improved grip and stability over OEM
- › Ideal for extreme riding conditions
- › Up to 25% lighter than OEM
- › Available in grey, blue, red and orange



YAMAHA	YEARS	BLUE	RED	ORANGE	GREY
YZ65	18-25	S1511B			S1511T
YZ85	02-25				
YZ125	97-25				
YZ250	97-25				
YZ250F	01-23				
	24-25	S1512B			
YZ450F	03-22	S1511B			S1511T
	23-25	S1512B			
YZ125X	17-25	S1511B			S1511T
YZ250X	16-25				
YZ250FX	15-24				
YZ250FX	2025	S1512B			
YZ450FX	16-23	S1511B			S1511T
YZ450FX	24-25	S1512B			
WR250F	01-23	S1511B			S1511T
WR250F	2025	S1512B			
WR450F	99-23	S1511B			S1511T
WR450F	24-25	S1512B			
TENERE700	20-24	S1511B			S1511T
HONDA	YEARS	BLUE	RED	ORANGE	GREY
CR125R	02-07	S3515B	S3515R		S3515
CR250R	02-07				
CRF150R	07-25				
CRF250R	04-25				
CRF450R	02-25				
CRF250L/M	12-22				
CRF250RX	19-25				
CRF450RX	17-25				
CRF250X	04-17				
CRF450X	05-25				
CRF250RALLY	17-19				
CRF300L	21-22				
CRF300RALLY	21-22				
CRF450L	19-20				

HONDA	YEARS	BLUE	RED	ORANGE	GREY
CRF450RL	21-23	S3515B	S3515R		S3515
CRF250RW	2025				
CRF450RW	2025				
CRF1000L AFRICA TWIN	18-19				
CRF1100L AFRICA TWIN	20-21				
KAWASAKI	YEARS	BLUE	RED	ORANGE	GREY
KX65	98-25	S3512B			
KX85	98-25				
KX250F	06-18	S3515B	S3515R		S3515
KX250	19-25				
KX450F	07-18	S3515B	S3515R		S3515
KX450	19-25				
KX250X	21-25				
KX450X	21-25				
KTM	YEARS	BLUE	RED	ORANGE	GREY
50SX	98-23	S5510B		S5510OR	S5510T
SX-E 5	20-23				
65SX	98-23				
85SX	98-17	S5585BL		S5585OR	
85SX	18-24	S5511B	S5511RD	S5511OR	S5511T
85SX	2025	S5515BL		S5515OR	S5515T
125SX	98-15	S5510B		S5510OR	S5510T
150SX					
250SXF					
350SXF					
450SXF					
125SX	16-22	S5511B	S5511RD	S5511OR	S5511T
150SX					
250SXF					
350SXF					
450SXF					
250SX	98-16	S5510B		S5510OR	S5510T

# EVO FOOTPEGS CONT'D

KTM	YEARS	BLUE	RED	ORANGE	GREY
250EXC	98-16	S5510B		S5510OR	S5510T
300EXC					
250EXCF					
350EXCF					
450EXCF					
500EXCF					
150EXC TPI	20-23	S5511B	S5511RD	S5511OR	S5511T
250EXC TPI	18-23				
300EXC TPI	18-23				
250SX	17-22				
250EXC	17-23				
300EXC					
250EXCF	17-23	S5511B	S5511RD	S5511OR	S5511T
350EXCF					
450EXCF					
500EXCF					
125SX	23-25	S5515BL		S5515OR	S5515T
150SX	2025				
250SX	23-25				
300SX					
250SXF					
350SXF					
450SXF					
125XC					
300XC					
250XCF					
350XCF					
450XCF					
125/250EXC	24-25	S5515BL		S5515OR	S5515T
300EXC					
250EXCF					
350EXCF					
450EXCF					
500EXCF					
300EXC SIX DAYS					
350EXCF SIX DAYS					
450EXCF SIX DAYS					
500EXCF SIX DAYS					
250XCW					
300XCW					
450XCW					
350XWF					
500XWF					
FREERIDE	12-24	S5585BL		S5585OR	
690 SMC	08-11				
690 SMCR	12-24				
690 ENDURO	08-10				
690ENDUROR	09-24				

HUSQVARNA	YEARS	BLUE	RED	ORANGE	GREY
TC50	17-24	S5510B		S5510OR	S5510T
EE 5	20-24				
TC65	17-24				
TC85	18-24	S5511B	S5511RD	S5511OR	S5511T
TC85	2025	S5515BL		S5515OR	S5515T
TE125	14-16	S5510B		S5510OR	S5510T
TE250/300					
TC250					
FE250/350					
FE450/501					
TC125	14-15				
FC250					
FC350					
HUSQVARNA	YEARS	BLUE	RED	ORANGE	GREY
FC450	14-15	S5510B		S5510OR	S5510T
TC125	16-22	S5511B	S5511RD	S5511OR	S5511T
FC250					
FC350					
FC450					
TE150i	20-23	S5511B	S5511RD	S5511OR	S5511T
TE250i	18-23				
TE300i	18-23				
TX125	17-19				
TC250	17-22				
TE250	17-23				
TE300					
FE250	17-23	S5511B	S5511RD	S5511OR	S5511T
FE350					
FE450					
FE501	17-23	S5511B	S5511RD	S5511OR	S5511T
FS450	17-22				
701 SUPERMOTO	16-25	S5585BL		S5585OR	
701 ENDURO	16-25				
TC125	23-25	S5515BL		S5515OR	S5515T
TC150	2025				
TC250	23-25				
FC250/350					
FC450					
TX300					
FX350/450					
FS450					
TE125	2025				
TE150	24-25				
TE250/300					
FE250					
FE350					
FE450					
FE501					

# EVO FOOTPEGS CONT'D

GAS GAS	YEARS	BLUE	RED	ORANGE	GREY				
MC-E 5	21-24	S5510B		S5510OR	S5510T				
MC50	21-24								
MC65	21-24								
MC85	21-24	S5511B	S5511RD	S5511OR	S5511T				
MC85	2025	S5515BL		S5515OR	S5515T				
MC125	21-23	S5511B		S5511OR	S5511T				
MC250	22-23	S5511B	S5511RD	S5511OR	S5511T				
MC250F	21-23								
MC350F	22-23								
MC450F	21-23								
EC250	21-23								
EC300	21-23								
EC250F	21-23								
EC350F	21-23								
MC125	24-25					S5515BL		S5515OR	S5515T
MC50/300	2025								
MC250	24-25								
MC250F									
MC350F									
MC450F									
EC125	2025								
EC250	24-25								
EC300									
EC250F									
EC350F									
EC450F									
EC500F									
EX250									
EX300									
EX250F									
EX350F									
EX450F									
SHERCO	YEARS	BLUE	RED	ORANGE	GREY				
125SE / SER	18-25	S5510B		S5510OR	S5510T				
250SE / SER	08-25								
300SE / SER									
250SEF/SEFR									
300SEF/SEFR									
450SEF/SEFR									
125SM	20-25								
500SM	20-25								

BETA	YEARS	BLUE	RED	ORANGE	GREY
RR125	18-19	S5510B		S5510OR	S5510T
RR200	2019				
RR250	05-19				
RR300					
RR350	05-19	S5510B		S5510OR	S5510T
RR390					
RR430					
RR480					
XTRAINER 250-300	15-25				
HUSABERG	YEARS				
FE250	08-14	S5510B		S5510OR	S5510T
FE350					
FE501					
FX450					
TE250					
TE300					
ALTA	YEARS	BLUE	RED	ORANGE	GREY
REDSHIFT EXR	16-19	S1511B			S1511T
REDSHIFT MXR					
REDSHIFT MX					
REDSHIFT EX					
REDSHIFT SM					
FANTIC	YEARS	BLUE	RED	ORANGE	GREY
XX125	21-25	S1511B			S1511T
XE125	21-25				
XX250	22-25				
XXF250	24-25				
XXF250	22-23				
XXF450	22-23				
XXF450	23-25				
XEF250	22-23				
XEF250	2025				
XEF450	22-23				
XEF450	2025				

# STANDARD FOOTPEGS

- › Original Scar design
- › Aluminium CNC machined
- › 48mm width
- › 18 flat-head stainless steel teeth
- › Improved grip and comfort over OEM
- › Available in grey, blue, red and orange



YAMAHA	YEARS	BLUE	RED	ORANGE	GREY				
YZ65	18-25	S1211B			S1211T				
YZ85	02-25								
YZ125/250	97-25								
YZ250F	01-23								
YZ450F	03-22								
YZ125X	17-25								
YZ250X	16-25								
YZ250FX	15-23								
YZ450FX	16-23								
WR250F	01-24								
WR450F	99-24								
TENERE700	20-25								
<b>HONDA</b>									
YAMAHA	YEARS					BLUE	RED	ORANGE	GREY
CR125R/250R	02-07		S3215R						
CRF150R	07-25								
CRF250R	04-25								
CRF450R	02-25								
CRF250L/M	12-22								
CRF250RX	19-25								
CRF450RX	17-25								
CRF250X	04-17								
CRF450X	05-25								
CRF250RALLY	17-19								
CRF300L	21-22								
CRF300RALLY	21-22								
CRF450L	19-20								
CRF450RL	21-23								
CRF250RW	2025								
CRF450RW	2025								
CRF1000L AFRICA TWIN	18-19								
CRF1100L AF-RICA TWIN	20-21								

KAWASAKI	YEARS	BLUE	RED	ORANGE	GREY
KX250F	06-18		S3215R		
KX250	19-25				
KX450F	07-18				
KX450	19-25				
KX250X/450X	21-25				
<b>KTM</b>					
KAWASAKI	YEARS	BLUE	RED	ORANGE	GREY
50/65SX	98-23			S5211OR	
SX-E 5	20-23				
85SX	98-17				
125SX	98-15				
150SX					
250/350/450SXF					
250SX					
250EXC	98-16				
300EXC					
250EXCF					
350EXCF					
450EXCF					
500EXCF					
FREERIDE	12-17			S5285OR	S5285T
<b>ALTA</b>					
KAWASAKI	YEARS	BLUE	RED	ORANGE	GREY
REDSHIFT EXR	16-19	S1211B			S1211T
REDSHIFT MXR	16-19				
REDSHIFT MX	16-19				
REDSHIFT EX	16-19				
REDSHIFT SM	16-19				
<b>FANTIC</b>					
KAWASAKI	YEARS	BLUE	RED	ORANGE	GREY
XX125	21-25	S1211B			S1211T
XX250	22-25				
XXF250	22-23				
XXF450	22-23				
XE125	21-24				
XEF250	22-23				
XEF450	22-23				



# HANDLE BARS



## O<sup>2</sup> 28,6MM GRAPHIC COLOUR

- › Aluminium 7050 T6
- › Bold printed graphics
- › 1 1/8" clamping diameter and 7/8" control ends diameter
- › Marked for precision centering and indexing
- › Polished, anodised, hard surface treatment for high resistance
- › High quality bar pad included

BEND DIMENSIONS O<sup>2</sup> 28,6 GRAPHIC COLOUR

MODEL	WIDTH	HEIGHT	RISE	SWEEP
RC	802	99	65	54
New CRF / KX	800	93	54	49
KTM HIGH	805	87	57	48
Stewart / Villopoto	810	93	50	55
McGrath / Short	810	79	44	52
YZ/YZF	801	88	55	55
RC High	802	114	80	54
Low Mini 65/85	755	72	37	50
85SX / 85TC	780	87	51	50
RC High Mini 65/85	755	115	70	51

# O<sup>2</sup> 28,6MM GRAPHIC COLOUR CONT'D



DARK BLUE GRAPHIC COLOUR



ORANGE GRAPHIC COLOUR

## RC BEND

HANDLEBAR	BAR PAD	PART
<b>BLACK</b>	White	S9112BK-WH
	Orange	S9112BK-OR
	Red	S9112BK-RD
	Black	S9112BK-BK
	Dark Blue	S9112BK-DKBL
	Blue	S9112BK-BL
<b>BLUE</b>	White	S9112BL-WH
	Orange	S9112BL-OR
	Red	S9112BL-RD
	Black	S9112BL-BK
	Blue	S9112BL-BL
<b>DARK BLUE</b>	White	S9112DKBL-WH
	Orange	S9112DKBL-OR
	Red	S9112DKBL-RD
	Black	S9112DKBL-BK
	Dark Blue	S9112DKBL-DKBL
<b>ORANGE</b>	White	S9112OR-WH
	Orange	S9112OR-OR
	Black	S9112OR-BK
	Dark Blue	S9112OR-DKBL
	Blue	S9112OR-BL
<b>RED</b>	White	S9112RD-WH
	Red	S9112RD-RD
	Black	S9112RD-BK
	Dark Blue	S9112RD-DKBL
	Blue	S9112RD-BL
<b>WHITE</b>	White	S9112WH-WH
	Orange	S9112WH-OR
	Red	S9112WH-RD
	Black	S9112WH-BK
	Dark Blue	S9112WH-DKBL
	Blue	S9112WH-BL

## RC HIGH BEND

HANDLEBAR	BAR PAD	PART
<b>BLACK</b>	White	S9132BK-WH
	Orange	S9132BK-OR
	Red	S9132BK-RD
	Black	S9132BK-BK
	Dark Blue	S9132BK-DKBL
	Blue	S9132BK-BL
<b>BLUE</b>	White	S9132BL-WH
	Orange	S9132BL-OR
	Red	S9132BL-RD
	Blue	S9132BL-BL
	Black	S9132BL-BK
<b>DARK BLUE</b>	White	S9132DKBL-WH
	Orange	S9132DKBL-OR
	Red	S9132DKBL-RD
	Black	S9132DKBL-BK
	Dark Blue	S9132DKBL-DKBL
<b>ORANGE</b>	White	S9132OR-WH
	Orange	S9132OR-OR
	Black	S9132OR-BK
	Dark Blue	S9132OR-DKBL
	Blue	S9132OR-BL
<b>RED</b>	White	S9132RD-WH
	Red	S9132RD-RD
	Black	S9132RD-BK
	Dark Blue	S9132RD-DKBL
	Blue	S9132RD-BL
<b>WHITE</b>	White	S9132WH-WH
	Orange	S9132WH-OR
	Red	S9132WH-RD
	Black	S9132WH-BK
	Dark Blue	S9132WH-DKBL
	Blue	S9132WH-BL

## 855X / TC85 BEND

HANDLEBAR	BAR PAD	PART
<b>BLACK</b>	White	S9151BK-WH
	Orange	S9151BK-OR
	Red	S9151BK-RD
	Black	S9151BK-BK
	Dark Blue	S9151BK-DKBL
	Blue	S9151BK-BL
<b>BLUE</b>	White	S9151BL-WH
	Orange	S9151BL-OR
	Red	S9151BL-RD
	Blue	S9151BL-BL
	Black	S9151BL-BK
<b>DARK BLUE</b>	White	S9151DKBL-WH
	Orange	S9151DKBL-OR
	Red	S9151DKBL-RD
	Black	S9151DKBL-BK
	Dark Blue	S9151DKBL-DKBL
<b>ORANGE</b>	White	S9151OR-WH
	Orange	S9151OR-OR
	Black	S9151OR-BK
	Dark Blue	S9151OR-DKBL
	Blue	S9151OR-BL
<b>RED</b>	White	S9151RD-WH
	Red	S9151RD-RD
	Black	S9151RD-BK
	Dark Blue	S9151RD-DKBL
	Blue	S9151RD-BL
<b>WHITE</b>	White	S9151WH-WH
	Orange	S9151WH-OR
	Red	S9151WH-RD
	Black	S9151WH-BK
	Dark Blue	S9151WH-DKBL
	Blue	S9151WH-BL



# O<sup>2</sup> 28,6MM GRAPHIC COLOUR CONT'D



RED GRAPHIC COLOUR



WHITE GRAPHIC COLOUR

## VILLOPOTO/STEWART BEND

HANDLEBAR	BAR PAD	PART
<b>BLACK</b>	White	S9162BK-WH
	Orange	S9162BK-OR
	Red	S9162BK-RD
	Black	S9162BK-BK
	Dark Blue	S9162BK-DKBL
	Blue	S9162BK-BL
<b>BLUE</b>	White	S9162BL-WH
	Orange	S9162BLOR
	Red	S9162BL-RD
	Blue	S9162BL-BL
	Black	S9162BL-BK
<b>DARK BLUE</b>	White	S9162DKBL-WH
	Orange	S9162DKBL-OR
	Red	S9162DKBL-RD
	Black	S9162DKBL-BK
	Dark Blue	S9162DKBL-DKBL
<b>ORANGE</b>	White	S9162OR-WH
	Orange	S9162OR-OR
	Black	S9162OR-BK
	Dark Blue	S9162OR-DKBL
	Blue	S9162OR-BL
<b>RED</b>	White	S9162RD-WH
	Red	S9162RD-RD
	Black	S9162RD-BK
	Dark Blue	S9162RD-DKBL
	Blue	S9162RD-BL
<b>WHITE</b>	White	S9162WH-WH
	Orange	S9162WH-OR
	Red	S9162WH-RD
	Black	S9162WH-BK
	Dark Blue	S9162WH-DKBL
	Blue	S9162WH-BL

## MCGRATH/SHORT KTM BEND

HANDLEBAR	BAR PAD	PART
<b>BLACK</b>	White	S9172BK-WH
	Orange	S9172BK-OR
	Red	S9172BK-RD
	Black	S9172BK-BK
	Dark Blue	S9172BK-DKBL
	Blue	S9172BK-BL
<b>BLUE</b>	White	S9172BL-WH
	Orange	S9172BL-OR
	Red	S9172BL-RD
	Blue	S9172BL-BL
	Black	S9172BL-BK
<b>DARK BLUE</b>	White	S9172DKBL-WH
	Orange	S9172DKBL-OR
	Red	S9172DKBL-RD
	Black	S9172DKBL-BK
	Dark Blue	S9172DKBL-DKBL
<b>ORANGE</b>	White	S9172OR-WH
	Orange	S9172OR-OR
	Black	S9172OR-BK
	Dark Blue	S9172OR-DKBL
	Blue	S9172OR-BL
<b>RED</b>	White	S9172RD-WH
	Red	S9172RD-RD
	Black	S9172RD-BK
	Dark Blue	S9172RD-DKBL
	Blue	S9172RD-BL
<b>WHITE</b>	White	S9172WH-WH
	Orange	S9172WH-OR
	Red	S9172WH-RD
	Black	S9172WH-BK
	Dark Blue	S9172WH-DKBL
	Blue	S9172WH-BL

## YAMAHA YZ/YZF BEND

HANDLEBAR	BAR PAD	PART
<b>BLACK</b>	White	S9182BK-WH
	Orange	S9182BK-OR
	Red	S9182BK-RD
	Black	S9182BK-BK
	Dark Blue	S9182BK-DKBL
	Blue	S9182BK-BL
<b>BLUE</b>	White	S9182BL-WH
	Orange	S9182BL-OR
	Red	S9182BL-RD
	Blue	S9182BL-BL
	Black	S9182BL-BK
<b>DARK BLUE</b>	White	S9182DKBL-WH
	Orange	S9182DKBL-OR
	Red	S9182DKBL-RD
	Black	S9182DKBL-BK
	Dark Blue	S9182DKBL-DKBL
<b>ORANGE</b>	White	S9182OR-WH
	Orange	S9182OR-OR
	Black	S9182OR-BK
	Dark Blue	S9182OR-DKBL
	Blue	S9182OR-BL
<b>RED</b>	White	S9182RD-WH
	Red	S9182RD-RD
	Black	S9182RD-BK
	Dark Blue	S9182RD-DKBL
	Blue	S9182RD-BL
<b>WHITE</b>	White	S9182WH-WH
	Orange	S9182WH-OR
	Red	S9182WH-RD
	Black	S9182WH-BK
	Dark Blue	S9182WH-DKBL
	Blue	S9182WH-BL

# O<sup>2</sup> 28,6MM GRAPHIC COLOUR CONT'D



BLACK GRAPHIC COLOUR



BLUE GRAPHIC COLOUR

## MINI 65/85 LOW

HANDLEBAR	BAR PAD	PART
<b>BLACK</b>	White	S9142BK-WH
	Orange	S9142BK-OR
	Red	S9142BK-RD
	Black	S9142BK-BK
	Dark Blue	S9142BK-DKBL
	Blue	S9142BK-BL
<b>BLUE</b>	White	S9142BL-WH
	Orange	S9142BL-OR
	Red	S9142BL-RD
	Black	S9142BL-BL
	Blue	S9142BL-BK
<b>DARK BLUE</b>	White	S9142DKBL-WH
	Orange	S9142DKBL-OR
	Red	S9142DKBL-RD
	Black	S9142DKBL-BK
	Dark Blue	S9142DKBL-DKBL
<b>ORANGE</b>	White	S9142OR-WH
	Orange	S9142OR-OR
	Black	S9142OR-BK
	Dark Blue	S9142OR-DKBL
	Blue	S9142OR-BL
<b>RED</b>	White	S9142RD-WH
	Red	S9142RD-RD
	Black	S9142RD-BK
	Dark Blue	S9142RD-DKBL
	Blue	S9142RD-BL
<b>WHITE</b>	White	S9142WH-WH
	Orange	S9142WH-OR
	Red	S9142WH-RD
	Black	S9142WH-BK
	Dark Blue	S9142WH-DKBL
	Blue	S9142WH-BL

## RC MINI 65/85 HIGH

HANDLEBAR	BAR PAD	PART
<b>BLACK</b>	White	S9152BK-WH
	Orange	S9152BK-OR
	Red	S9152BK-RD
	Black	S9152BK-BK
	Dark Blue	S9152BK-DKBL
	Blue	S9152BK-BL
<b>BLUE</b>	White	S9152BL-WH
	Orange	S9152BL-OR
	Red	S9152BL-RD
	Blue	S9152BL-BL
	Black	S9152BL-BK
<b>DARK BLUE</b>	White	S9152DKBL-WH
	Orange	S9152DKBL-OR
	Red	S9152DKBL-RD
	Black	S9152DKBL-BK
	Dark Blue	S9152DKBL-DKBL
<b>ORANGE</b>	White	S9152OR-WH
	Orange	S9152OR-OR
	Black	S9152OR-BK
	Dark Blue	S9152OR-DKBL
	Blue	S9152OR-BL
<b>RED</b>	White	S9152RD-WH
	Red	S9152RD-RD
	Black	S9152RD-BK
	Dark Blue	S9152RD-DKBL
	Blue	S9152RD-BL
<b>WHITE</b>	White	S9152WH-WH
	Orange	S9152WH-OR
	Red	S9152WH-RD
	Black	S9152WH-BK
	Dark Blue	S9152WH-DKBL
	Blue	S9152WH-BL

## 28,6 CROSS BAR X<sup>2</sup>

- › Aluminium 7050 T6
- › 1 1/8" clamping diameter and 7/8" control ends diameter
- › Added crossbar
- › Marked for precision centering and indexing
- › Polished, anodised, hard surface treatment for high resistance
- › High quality bar pad included



### BEND DIMENSIONS 28,6 CROSS BAR X<sup>2</sup>

MODEL	WIDTH	HEIGHT	RISE	SWEEP	COLOUR
RC	802	99	65	54	BLACK
Stewart / Villopoto	810	93	50	55	

MODEL	WIDTH	HEIGHT	RISE	SWEEP	COLOUR
McGrath / Short	810	79	44	52	BLACK
Reed / Windham	803	98	69	56	

#### RC BEND

BAR PAD	PART
Black	S9212BK
White	S9212W
Yellow Fluo	S9212Y
Orange Fluo	S9212OR
Green Fluo	S9212G
Blue	S9212BL
Dark Blue	S9212DKBL
Red	S9212R

#### STEWART / VILLOPOTO BEND

BAR PAD	PART
Black	S9262BK
White	S9262W
Yellow Fluo	S9262Y
Orange Fluo	S9262OR
Green Fluo	S9262G
Blue	S9262BL
Dark Blue	S9262DKBL
Red	S9262R

#### MCGRATH / SHORT BEND

BAR PAD	PART
Black	S9272BK
White	S9272W
Yellow Fluo	S9272Y
Orange Fluo	S9272OR
Green Fluo	S9272G
Blue	S9272BL
Dark Blue	S9272DKBL
Red	S9272R

#### REED / WINDHAM BEND

BAR PAD	PART
Black	S9292BK
White	S9292W
Yellow Fluo	S9292Y
Orange Fluo	S9292OR
Green Fluo	S9292G
Blue	S9292BL
Dark Blue	S9292DKBL
Red	S9292R

## O<sup>2</sup> 28,6MM

- › Aluminium 7050 T6
- › 1 1/8" clamping diameter and 7/8" control ends diameter
- › Marked for precision centering and indexing
- › Polished, anodised, hard surface treatment for high resistance
- › High quality bar pad included



### BEND DIMENSIONS O<sup>2</sup> 28,6

MODEL	WIDTH	HEIGHT	RISE	SWEEP	COLOUR
RC	802	99	65	54	BLACK
New CRF / KX	800	93	54	49	
KTM HIGH	805	87	57	48	
Stewart / Villopoto	810	93	50	55	
McGrath / Short	810	79	44	52	

MODEL	WIDTH	HEIGHT	RISE	SWEEP	COLOUR
YZ/YZF	801	88	55	55	
RC High	802	114	80	54	BLACK
Mini 65/85 Low	755	72	37	50	
85SX / 85TC	780	87	51	50	
RC Mini 65/85 High	755	115	70	51	

## O<sup>2</sup> 28,6MM CONT'D

### RC BEND

BAR PAD	PART
Black	S9112BK
White	S9112W
Yellow Fluo	S9112Y
Orange Fluo	S9112OR
Green Fluo	S9112G
Blue	S9112BL
Dark Blue	S9112DKBL
Red	S9112R

### MCGRATH / SHORT BEND

BAR PAD	PART
Black	S9172BK
White	S9172W
Yellow Fluo	S9172Y
Orange Fluo	S9172OR
Green Fluo	S9172G
Blue	S9172BL
Dark Blue	S9172DKBL
Red	S9172R

### RC HIGH BEND

BAR PAD	PART
Black	S9132BK
White	S9132W
Yellow Fluo	S9132Y
Orange Fluo	S9132OR
Green Fluo	S9132G
Blue	S9132BL
Dark Blue	S9132DKBL
Red	S9132R

### 85SX / 85TC BEND

BAR PAD	PART
Black	S9151BK
White	S9151W
Yellow Fluo	S9151Y
Orange Fluo	S9151OR
Green Fluo	S9151G
Blue	S9151BL
Dark Blue	S9151DKBL
Red	S9151R

### STEWART / VILLOPOTO BEND

BAR PAD	PART
Black	S9162BK
White	S9162W
Yellow Fluo	S9162Y
Orange Fluo	S9162OR
Green Fluo	S9162G
Blue	S9162BL
Dark Blue	S9162DKBL
Red	S9162R

### YZ/YZF BEND

BAR PAD	PART
Black	S9182BK
White	S9182W
Yellow Fluo	S9182Y
Orange Fluo	S9182OR
Green Fluo	S9182G
Blue	S9182BL
Dark Blue	S9182DKBL
Red	S9182R

### MINI 65/85 LOW BEND

BAR PAD	PART
Black	S9142BK
White	S9142W
Yellow Fluo	S9142Y
Orange Fluo	S9142OR
Green Fluo	S9142G
Blue	S9142BL
Dark Blue	S9142DKBL
Red	S9142R

### RC MINI 65/85 HIGH BEND

BAR PAD	PART
Black	S9152BK
White	S9152W
Yellow Fluo	S9152Y
Orange Fluo	S9152OR
Green Fluo	S9152G
Blue	S9152BL
Dark Blue	S9152DKBL
Red	S9152R

## S<sup>2</sup> 22,2MM

- › Aluminium 2014 T6
- › 7/8" clamping diameter
- › Added crossbar
- › Marked for precision centering and indexing
- › Polished, anodised, hard surface treatment for high resistance
- › High quality bar pad included



### BEND DIMENSIONS S<sup>2</sup> 22,2

RISE	MODEL	WIDTH	HEIGHT	SWEEP	COLOUR
Medium	MX	802	99	54	BLACK
Low	SX	805	80	55	
High	Enduro	805	115	50	
Very High	Pit bike	724	171	44	

### MEDIUM RISE

BAR PAD	PART
Black	S9012BK
White	S9012W
Yellow Fluo	S9012Y
Orange Fluo	S9012OR
Green Fluo	S9012G
Blue	S9012BL
Dark Blue	S9012DKBL
Red	S9012R

### LOW RISE

BAR PAD	PART
Black	S9022BK
White	S9022W
Yellow Fluo	S9022Y
Orange Fluo	S9022OR
Green Fluo	S9022G
Blue	S9022BL
Dark Blue	S9022DKBL
Red	S9022R

### HIGH RISE

BAR PAD	PART
Black	S9032BK
White	S9032WH
Yellow Fluo	S9032Y
Orange Fluo	S9032OR
Green Fluo	S9032G
Blue	S9032BL
Dark Blue	S9032DKBL
Red	S9032R



## BAR PADS

- › High quality bar pads
- › Provides rider protection
- › Available in a wide range of colours



MODEL	COLOUR	PART
28,6 (1 1/8")	Black	SMSOBK
	White	SMSOW
	Yellow Fluo	SMSOY
	Orange Fluo	SMSOOR
	Green Fluo	SMSOG
	Blue	SMSOBL
	Dark Blue	SMSODKBL
	Red	SMSOR



MODEL	COLOUR	PART
22,2 (7/8")	Black	MSXBK
	White	MSXW
	Yellow Fluo	MSXY
	Orange Fluo	MSXOR
	Green Fluo	MSXG
	Blue	MSXBL
	Dark Blue	MSXDKBL
	Red	MSXR
22,2 Mini/dirt	Black	MINSXBK



## UNIVERSAL ROTATING BAR CLAMP

- › Universal rotating bar clamp
- › CNC Machined
- › Includes nylon sleeve to insert between the clamp and bars allowing the perch to rotate upon impact
- › Anodised for lasting finish

COLOUR	PART
Black	RBC1
Blue	RBC2
Red	RBC3
Orange	RBC4



## DONUTS

- › Made from soft neoprene
- › Helps to prevent blisters
- › Available in five colours

COLOUR	PART
Black	DTZ1
Blue	DTZ2
Red	DTZ3
Orange	DTZ4
Green	DTZ5



## DUAL DENSITY GRIPS

- › Dual compound with supersoft outer compound
- › Shock absorption reduce fatigue, arm pump and blisters
- › Available in four colours

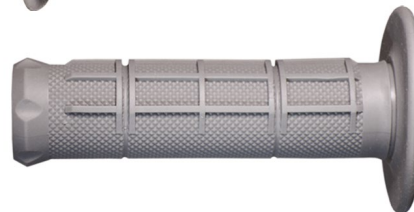
COLOUR	PART
Grey / Black	GDDBLK
Grey / Blue	GDDBL
Grey / Red	GDDR
Grey / Orange	GDDOR



## SINGLE DENSITY GRIPS

- › Soft compound for the most comfortable grip
- › Diamond half waffle offers two distinct grips patterns — perfect in all conditions
- › Available in three colours

COLOUR	PART
Black	GOSBLK
Grey	GOSG
White	GOSW



## CLEAN GRIP COVER

- › Keep your grips clean when transporting or working on your bike
- › Sold in pairs



PART	SCGC



# TRIPLE CLAMPS

## TRIPLE CLAMPS APEX

- › CNC machined aluminium 7075-T6
- › 6 handlebar mount positions.
- › M12 mounting interface.
- › Supplied with steering stem and steering bearing already pressed on.
- › Split clamps to improve suspension plushness.
- › 100 % alignment of the fork tubes
- › Perfect flexibility – adapted precisely to the OEM fork.
- › Optimally tuned steering stem stiffness
- › Improved strength and rigidity offers better control.
- › Offers better control.



YAMAHA	YEARS	OFFSET	SILVER
YZ125	15-25	25mm	S1426X
YZ125X	20-25		
YZ250	15-25		S1427X
YZ250X	18-25		
YZ250F	12-25	22mm	S1424X
YZ450F	10-25		
YZ250FX	2025		
YZ450FX	24-25		
WR250F	20-25		
WR450F	19-25		
HONDA	YEARS		
CR125R/250R	97-07	22mm (std -2mm)	S2418X
CRF250R	04-07		
CRF450R	02-04		
CRF250R/250RX	22-25	22mm	S2421X
CRF450R/450RX	21-25		
KAWASAKI	YEARS	OFFSET	SILVER
KX250F	06-18	23mm	S3418X
KX250	19-25		
KX450F	07-18		
KX450	19-25		
KX250X/450X	21-25		

KTM	YEARS	OFFSET	SILVER
65SX	21-23	22mm (std)	S5415X
65SX	24-25	22mm (std)	S5419X
85SX	04-24	14mm (std)	S5416X
85SX	2025	14mm (std)	S5420X
125/250/300SX	23-25	22mm (std)	S5418X
150SX	2025		
250/350/450SXF	23-25		
125/300XC	23-25		
250/350/450XCF	23-25		
125/250/300EXC	24-25	22mm (std)	S5418X
250/350/450/500EXCF	24-25	22mm (std)	S5418X
300-500EXC SIX DAYS	24-25		
125XCW	2025		
250/300/450XCW	24-25		
350/500XWF	24-25		
HUSQVARNA	YEARS	OFFSET	SILVER
TC65	21-23	22mm (std)	S5415X
TC65	24-25	22mm (std)	S5419X
TC85	14-24	14mm (std)	S5416X
TC85	2025	14mm (std)	S5420X
TC125/250/300	23-25	22mm (std)	S5418X
TC150	2025		

## TRIPLE CLAMPS APEX CONT'D

HUSQVARNA	YEARS	OFFSET	SILVER
FC250/350/450	23-25	22mm (std)	S5418X
TX300	23-25		
FX350/450	23-25		
TE125	2025	22mm (std)	S5418X
TE150/250/300	24-25		
FE250-501	24-25		
GASGAS	YEARS	OFFSET	SILVER
MC65	21-23	22mm (std)	S5415X
MC65	24-25	22mm (std)	S5419X
MC85	21-24	14mm (std)	S5416X
MC85	2025	14mm (std)	S5420X

GASGAS	YEARS	OFFSET	SILVER
MC125/250	24-25	22mm (std)	S5418X
MC150/300	2025		
MC250/350/450F	24-25		
EC125/250/300	2025		
EC250/350/450/500F	24-25		
EX250/300	24-25		
EX250/350/450F	24-25		
FANTIC	YEARS	OFFSET	SILVER
XX125	21-25	25mm	S1426X
XX250	21-25	25mm	S1427X
XXF250/450	22-25	22mm	S1424X

## BAR MOUNTS FOR SCAR TRIPLE CLAMPS APEX

NEW

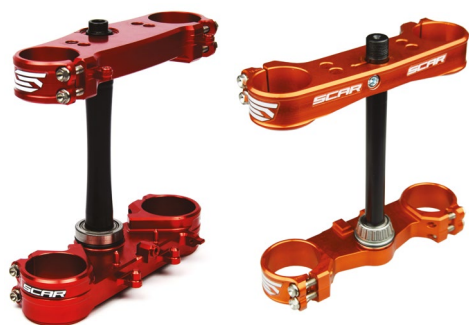
- › The handlebar can be adjusted in 24 different positions on the SCAR Triple clamps APEX
- › CNC Machined
- › Designed for SCAR Triple clamps APEX
- › Four height options included

DIAMETER	HEIGHT	PART
28,6 (1 1/8")	30/35/40/45mm	P32



## TRIPLE CLAMPS

- › Top clamp and bottom clamp
- › Pressed in stem and "NTN" lower bearing
- › CNC machined aluminium 7075-T6
- › Four bar positions with Scar Bar Mounts
- › Improved strength and rigidity offers better control
- › Used by our factory racing teams



YAMAHA	YEARS	OFFSET	BLUE	RED	ORANGE	BLACK
YZ65	18-25	25mm	S1422			
YZ85	06-25					
YZ125	15-25		S1426			
YZ125X	20-25					
YZ250	15-25		S1427			
YZ250X	18-25					
YZ250F	12-25	22mm	S1424			
YZ450F	10-25					
YZ250FX	2025					
YZ450FX	24-25					
WR250F	20-25					
WR450F	19-25					



# TRIPLE CLAMPS CONT'D

HONDA	YEARS	OFFSET	BLUE	RED	ORANGE	BLACK			
CR125R	97-07	22mm (std -2mm)		S2418					
CR250R	97-07			S2418					
CRF250R	04-07			S2418					
CRF450R	02-04			S2418					
CRF250R	10-13	22mm		S2416					
CRF450R	09-12			S2416					
CRF250R	14-21			S2420					
	22-25			S2421					
CRF450R	13-20			S2420					
	21-25			S2421					
CRF450RX	21-25								
KAWASAKI	YEARS			OFFSET			BLUE	RED	ORANGE
KX250F	06-18	23 mm				S3418			
KX250	19-25								
KX450F	07-18								
KX450	19-25								
KX250X/ KX450X	21-25								
KTM	YEARS	OFFSET	BLUE	RED	ORANGE	BLACK			
50SX	06-11	15mm (std)				S5408			
50SX	12-20	22mm (std)			S5413				
SX-E 5	2020				S5413				
65SX	12-20				S5414				
	21-24		S5415BK						
	24-25		S5419BK						
85SX	04-24	16mm (std +2mm)	S5416B	S5416RD	S5416OR				
125-450 SX/SXF	13-22	22mm (std)	S5417B	S5417RD	S5417OR				
125-450 SX/SXF	23-25		S5418B		S5418OR				
150SX	2025		S5418B		S5418OR				
125-450 XC/XCF	23-25		S5418B		S5418OR				
125-500 EXC/EXCF/TPI	14-23		S5417B	S5417RD	S5417OR				
125-500 EXC/EXCF	24-25		S5418B	S5418RD	S5418OR				
300-500 EXC/EXCF SIX DAYS	24-25		S5418B	S5418RD	S5418OR				
125XCW	2025		S5418B	S5418RD	S5418OR				
250-500 XCW/XWF	24-25		S5418B	S5418RD	S5418OR				
HUSQVARNA	YEARS		OFFSET	BLUE	RED	ORANGE	BLACK		
TC65	21-24	22mm (std)				S5415BK			
	24-25	22mm (std)				S5419BK			
TC85	14-24	16mm (std +2mm)	S5416B	S5416RD					
125-450 TC/FC	14-22	22mm (std)	S5417B	S5417RD					
125-501 TE/FE/TX	14-23	22mm (std)	S5417B	S5417RD					
125-450 TC/FC/TX/FX	23-25	22mm (std)	S5418BL		S5418OR				
TC150/300	2025	22mm (std)	S5418BL						
TE125	2025	22mm (std)	S5418BL						
150-501 TE/FE	24-25	22mm (std)	S5418BL						
BETA	YEARS	OFFSET	BLUE	RED	ORANGE	BLACK			
RR125	18-25	20mm (std)		S7410					
RR200	19-25								
RR 250-480	16-25								

## TRIPLE CLAMPS CONT'D

GAS GAS	YEARS	OFFSET	BLUE	RED	ORANGE	BLACK
MC65	21-24	22mm (std)				S5415BK
MC65	24-25	22mm (std)				S5419BK
MC85	21-24	16mm (std +2mm)	S5416B	S5416RD	S5416OR	
125-450 MC/MCF/EC/ECF	21-23	22mm (std)	S5417B	S5417RD	S5417OR	
125-500 MC/EC/ECF/EX/EXF	24-25	22mm (std)		S5418RD		
MC150/300 EC125	2025	22mm (std)		S5418RD		
FANTIC	YEARS	OFFSET	BLUE	RED	ORANGE	BLACK
XX125/XE 125	21-25	25mm	S1426			
XX250	21-25	25mm	S1427			
XXF250/ XXF450	22-25	22mm	S1424			

## BAR MOUNTS FOR OEM TRIPLE CLAMPS

- › CNC Machined
- › Bar mounts enable fitment of OEM clamps with 1 1/8" handlebars
- › Uses Scar Rubber Killers or OEM rubber cones
- › Four height options included



HONDA	YEARS	DIAMETER	HEIGHT	PART
CR125R	00-07	28.6	30/35/40/45mm	P62
CR250R	99-07			
CRF250R	04-25			
CRF450R	02-25			
CRF250X	04-17			
CRF450X	05-17			
CRF250RX	19-25			
CRF450RX	17-25			
YAMAHA	YEARS			
YZ250F/450F	14-25	28.6	30/35/40/45mm	P62
YZ250FX	15-25			
YZ450FX	16-25			
WR250F	15-25			
WR450F	16-25			
KAWASAKI	YEARS			
KX250F	09-18	28,6	30mm	P63
KX250	19-25			
KX450F	06-18			
KX450	19-25			
KX250X/450X	21-25			
KTM	YEARS	DIAMETER	HEIGHT	PART
85SX	13-25	28.6	35/40/45/50mm	P65
125SX	05-15			
144SX	07-08			
150SX	09-15			
250SX/250SFX	05-15			
350SX	11-15			

KTM	YEARS	DIAMETER	HEIGHT	PART
450SXF	06-15	28.6	35/40/45/50mm	P65
125EXC	12-16			
250EXC	12-18			
300EXC	12-21			
150EXC TPI	20-23			
250/300EXC TPI	18-23			
250-500 EXCF	12-23			
250-500 EXC 6 DAYS	14-23			
790 ADVENTURE R	2019			
1090 ADVENTURE	17-18			
1190 ADVENTURE	14-16			
1290 Super Adventure	17-19			
1290 Super Duke GT	2019			
Freeride E-XC	15-19			
Freeride 250R/350	14-17			
125/150/250 SX	16-22	28.6	30/35/40/45mm	P66
250/350/450SXF	16-22			
690 Enduro R	19-25			
690 SMC-R	19-25			
125-450 SX/SXF	23-25			
150SX	2025	28.6	40/45/50/55mm	P67
125-450 XC/XCF	23-25			
125-500 EXC/EXCF	24-25			
300 EXC 6 DAYS	24-25			
350-500 EXCF 6 DAYS	24-25			
125XCW	2025			
250-500 XCW/XWF	24-25			

## BAR MOUNTS FOR OEM TRIPLE CLAMPS CONT'D

HUSQVARNA		DIAMETER	HEIGHT	PART	BETA	YEARS	DIAMETER	HEIGHT	PART						
TC85	14-25	28.6	35/40/45/50mm	P65	RR390/430/480	15-25	28.6	35/40/45/50mm	P65						
TC125/250	14-15				XTRAINER 250	17-25									
FC250/350/450	14-15				XTRAINER 300	15-25									
TE125	14-16				<b>HUSABERG</b>										
TX125	17-22				TE 125	12-14				28.6	35/40/45/50mm	P65			
TE150	17-22				TE 250/300	11-14									
TE250	17-18				FE 250/350	13-14									
TE300	17-18				FE 390	10-12									
TE150i	20-23				FE 450	09-14									
TE250i/300i	18-23				FE 501	13-14									
FE250/350/450/501	14-23				<b>GAS GAS</b>										
TC125/250	16-22				28.6	30/35/40/45mm				P66	MC85	21-25	28.6	35/40/45/50mm	P65
FC250/350/450	16-22										MC125	21-23			
701ENDURO	16-25	MC250	22-23												
701 SUPERMOTO	16-25	<b>GAS GAS</b>													
TX300	17-22	28.6	40/45/50/55mm	P67	MC250F	21-23	28.6	35/40/45/50mm	P65						
FX350/450	17-22				MC350F	22-23									
125-450 TC/FC	23-25				MC450F	21-23									
TC150/300	2025				EC250	21-23									
TE125	2025				EC300	21-23									
150-501 TE/FE	24-25				EC250F /EC350F	21-23									
300-450 TX/FX	23-25				125-450 MC/MCF	24-25				28.6	40/45/50/55mm	P67			
<b>SHERCO</b>					MC150/300	2025									
125SE/SER	18-25				250-500 EC/ECF	2024									
250SE/SER	12-25				EC125	2025									
300SE/SER	12-25	28.6	35/40/45/50mm	P65	250-450 EX/EXF	24-25									
250SEF/SEFR	12-25				<b>FANTIC</b>										
300SEF/SEFR	12-25				XXF250/450	22-25	28.6	30/35/40/45mm	P62						
450SEF/SEFR	12-25				XEF250/450	22-25									
<b>BETA</b>		<b>BETA</b>			<b>STARK FUTURE</b>										
RR125	18-25	28.6	35/40/45/50mm	P65	Yarg	23-25	28,6	30/35/40/45mm	P66						
RR200	19-25														
RR250/300	13-25														
RR350	12-25														

## BAR MOUNTS FOR SCAR TRIPLE CLAMPS

- › CNC Machined
- › Designed for Scar triple clamps
- › Four height options included

DIAMETER	HEIGHT	PART
22,2 (7/8")	30/35/40/45mm	P30
28,6 (1 1/8")	30/35/40/45mm	SP31



## UNIVERSAL BAR MOUNTS

- › Bar risers available to upgrade to tapered handlebars
- › Fits all 22,2mm (7/8") handlebar clamps

COLOUR	PART
Black	SP41B



## STANDARD BAR MOUNTS

- › Designed for use with Scar Triple Clamps and solid cones
- › Two diameters available

DIAMETER	HEIGHT	PART
22,2 (7/8")	35mm	SP11
28,6 (1 1/8")	35mm	P21



## BAR RISE KIT

- › CNC Machined
- › Bar riser kit for stock bar mount
- › Provides 20mm higher bar position than stock bar position
- › For use on dirt bikes and ATVs
- › Comes with bar clamp bolts

DIAMETER	RISE	PART
22.2mm, 7/8"	20mm	UBR1
28.6mm, 1 1/8"	20mm	UBR2



## RUBBER KILLERS

- › Designed to replace rubber bar mounted OEM triple clamps
- › Provides direct control and prevents bar twist in the event of a crash
- › Comes in four pieces of solid cones
- › CNC machined and anodised



YAMAHA	YEARS	COLOUR	PART
YZ250F/450F	14-25	BLUE	SCYZF
YZ250FX	15-25		
YZ450FX	16-25		
WR250F	15-25		
WR450F	16-25		
HONDA	YEARS	COLOUR	PART
CR125R	00-07	RED	SCCRF
CR250R	99-07		
CRF250R	04-25		
CRF450R	02-25		
CRF250RX	19-25		
CRF450RX	17-25		
CRF450X	08-25		
CRF450L	19-20		
CRF450RL	21-24		

KAWASAKI	YEARS	COLOUR	PART
KX250F	15-18	BLUE	SCKXF
KX250	19-25		
KX450F	12-18		
KX450	19-25		
KX250X/450X	21-25		
SUZUKI	YEARS	COLOUR	PART
RM125	05-08	RED	SCRMZ
RM250	02-08		
RMZ250	07-25		
RMZ450	05-25		
DRZ400SM	05-18		
RMX450Z	10-17		
KTM	YEARS	COLOUR	PART
125/150/250SX	16-22	ORANGE	SCKTM
250/350/450SXF	16-22		

KTM	YEARS	COLOUR	PART
690 Enduro R	19-25	ORANGE	SCKTM
690 SMC-R	19-25		
125-450SX/SXF	23-25	BLACK	SCKTHG
125-450XC/XCF	23-25	BLACK	
300EXC 6 DAYS	24-25	BLACK	
300EXC 6 DAYS			
350EXCF 6 DAYS			
450EXCF 6 DAYS			
500EXCF 6 DAYS			
125XCW	2025	BLACK	SCKTHG
250-500 XWF	24-25	BLACK	

# RUBBER KILLERS CONT'D

HUSQVARNA	YEARS	COLOUR	PART
TC125/250	16-22	BLUE	SCHUS
FC250/350/450	16-22		
TX300	17-22		
FX350	17-22		
FX450	17-22		
701ENDURO	16-24		
701SUPERMOTO	16-24		
125-450 TC/FC	23-25	BLACK	SCKTHG
TC150	2025		
TE125	2025		
150-501 TE/FE	24-25		
TX 300	23-25		
FX 350/450	23-25		

FANTIC	YEARS	COLOUR	PART
XXF250/450	22-25	BLUE	SCYZF
XEF250/450	22-25		
GASGAS	YEARS	COLOUR	PART
MC250F Factory edition	2024	BLACK	SCKTHG
MC450F Factory edition			
STARK FUTURE	YEARS	COLOUR	PART
Varg	23-25	ORANGE	SCKTM
	23-25	BLUE	SCHUS
TRIUMPH	YEARS	COLOUR	PART
TF250-X	24-25	ORANGE	SCKTM
	24-25	BLUE	SCHUS

## BRAKE FLEX LEVER

- › Aluminium flex lever
- › Adjustable reach system
- › Designed to flex on impact
- › Prevents broken levers in the event of a crash
- › Lighter and stronger than OEM



YAMAHA	YEARS	PART
YZ65	18-25	PBL100
YZ85	01-25	
YZ125/250	01-07	
YZ250F	01-06	
YZ450F	01-07	
WR250F	01-16	
WR450F	01-15	PBL101
YZ125/250	08-25	
YZ250F	07-25	
YZ450F	08-25	
YZ125X	17-25	
YZ250X	16-25	
YZ250FX	15-25	
YZ450FX	16-25	
WR250F	17-25	
WR450F	16-25	
HONDA	YEARS	PART
CR80/85R	98-07	PBL201
CRF150R	07-25	
CRF150F	03-17	
CRF230F	03-17	
CR125R	92-07	
CR250R	92-07	

HONDA	YEARS	PART	
CRF250R	04-06	PBL201	
CRF450R	02-06		
CRF250X	04-17		
CRF450X	05-17		
CRF250R/450R	07-25	PBL200	
CRF250RX	19-25		
CRF450RX	17-25		
KAWASAKI	YEARS		PART
KX65	00-25	PBL100	
KX85	01-25		
KX100	01-21		
KX125/250	00-08		
KLX450R	08-15		
KX250F/450F	04-12		
KLX300R	2020		PBL100
KX250F	13-20		PBL101
KX250	21-25		PBL300
KX450F	13-18		PBL101
KX450	19-23	PBL300	
KX450	24-25	PBL503	
KX250X	21-25	PBL300	
KX450X	21-23		
KX450X	24-25	PBL503	

SUZUKI	YEARS	PART	
RM85	05-24	PBL100	
RM125	04-08		
RM250	04-08		
RMZ250	04-25		
RMZ450	04-25		
RMX450Z	10-17	PBL503	
KTM	YEARS		PART
65SX	14-25		PBL502
85SX	13-25		PBL502
125-450SX/SXF	05-13		PBL500
250/300EXC			
250-500EXCF	14-25		PBL503
125/150/250SX			
300SX	23-25		PBL503
250SXF	14-25		
350SXF	20-25		
450SXF			
150EXC TPI	18-25		
250EXC TPI	18-25	PBL300	
300EXC TPI	18-25		
250-300EXC	14-25		
250-500EXCF	21-25	PBL300	
125XC			

## BRAKE FLEX LEVER

KTM	YEARS	PART
300XC	14-25	
250-450XCF	14-25	
250/300XCW	14-25	
125XCW	2025	
450 XCFW	20-25	
350/500 XWF	24-25	
HUSABERG	YEARS	PART
FE250/350/501	05-13	PBL500
FX450		
TE250/300		
HUSQVARNA	YEARS	PART
2 STROKE	01-13	PBL500
4 STROKE	04-13	PBL502
TC65	18-25	
TC85	14-25	PBL503
TC125	14-17	
FC250/350/450	14-17	PBL503
TE125/250/300		
TE250/300		
TC250		
FE250-501	2018	PBL504
TC125		
FC250/350/450	20-21	PBL504
TE150i		
TE250i/300i	18-21	
TE125/250/300		
FE250-501		
TE125	22-24	PBL505
TE150i/250i/300i		
FE250-501		
TE125-300	2025	PBL503
FE250-501		
TC125	19-25 (not 18)	PBL503

HUSQVARNA	YEARS	PART
TC150/300	2025	PBL503
TC250	19-25 (not 18)	PBL503
FC250/350/450		
TX300	22-25	
FX350/450		
SHERCO	YEARS	PART
125SE / SER	18-25	PBL503
250SE / SER	15-25	
300SE /SER		
250SEF / SEFR		
300SEF / SEFR		
450SEF / SEFR		
BETA	YEARS	PART
RR125	19-25	PBL201
RR200	13-25	PBL201
RR250		
RR300	08-25	
RR350		
RR390		
RR430		
RR480		
XTRAINER 250	17-25	
XTRAINER 300	15-25	
GAS GAS	YEARS	PART
EC250	00-19	PBL201
EC300		
EC250F	10-15	
EC300F	21-25	PBL502
MC65		
MC85	21-22	PBL503
MC125		
MC250		
MC250F	2022	
MC250F	21-22	

GAS GAS	YEARS	PART
MC350F	2022	
MC450F	21-22	
MC125/250	23-25	
GAS GAS	YEARS	PART
MC125/300	2025	PBL505
MC250F		
MC350F		
MC450F		
EC125	2025	
EC250/300	21-25	
EC250F/350F	24-25	
EC450F/500F		
EX250/300		
EX350F/450F		
TM	YEARS	PART
85JUNIOR	15-17	PBL500
85JUNIOR	18-25	PBL503
144MX/EN	15-19	PBL201
250MX/EN		
300MX/EN		
450MX/EN		
144MX/EN	20-25	PBL503
250MX/EN		
300MX/EN		
450MX/EN		
STARK FUTURE	YEARS	PART
Varg	23-25	PBL503
TRIUMPH	YEARS	PART
TF250-X	24-25	PBL503

## CLUTCH FLEX LEVER

- › Aluminium flex lever
- › Adjustable reach system
- › Designed to flex on impact
- › Prevents broken levers in the event of a crash
- › Lighter and stronger than OEM



YAMAHA	YEARS	PART
YZ125	00-14	PCL100
YZ250	00-14	
YZ250F	01-09	
YZ450F	01-09	
YZ65	18-25	PCL101
YZ85/125/250	15-25	

YAMAHA	YEARS	PART
YZ250F	10-25	PCL101
YZ450F	10-25	
YZ125X	17-25	
YZ250X	16-25	
YZ250FX	20-25	
YZ450FX	19-25	

YAMAHA	YEARS	PART
WR250F	2025	PCL101
WR450F	24-25	
HONDA	YEARS	PART
CR125R/250R	04-07	PCL200
CRF250R	04-25	
CRF450R	04-20	

# CLUTCH FLEX LEVER CONT'D

HONDA	YEARS	PART
CRF450R	21-25	PCL201
CRF250X	04-17	PCL200
CRF450X	05-19	
CRF250RX	19-25	
CRF450RX	17-20	
CRF450RX	21-25	
CRF450RX	21-25	PCL201
KAWASAKI	YEARS	PART
KX65	00-25	PCL300
KX85	98-25	
KX125	90-05	PCL300
KX250	90-04	
KX250F	04	
KX125	06-08	PCL100
KX250	05-08	
KX250F	05-20	
KX250	21-25	
KX450F	06-18	PCL100
KX450	19-25	PCL301
KX250X/450X	21-25	
SUZUKI	YEARS	PART
RMZ250	07-25	PCL300
RMZ450	05-25	
KTM	YEARS	PART
65SX	14-25	PCL502
85SX	13-25	PCL502
125SX	09-15	PCL503
	16-25	PCL500
150SX	09-15	PCL503
	16-25	PCL500
250SX	06-25	PCL500
300SX	23-25	PCL500
250SXF	07-25	
350SXF	10-25	
450SXF	09-12	
	13-25	PCL500
125EXC	09-16	PCL503
150EXC TPI	20-25	PCL500
200EXC	09-16	PCL503
250EXC	06-18	PCL500
250EXC TPI	18-25	
300EXC	06-25	
300EXC TPI	18-25	
250EXCF	06-25	
350EXCF	12-25	
450EXC	07-23	
450EXCF	07-25	
500EXC		
500EXCF		
125XC	21-25	
300XC	06-19	
250XCF	07-25	

KTM	YEARS	PART	
350XCF	12-25	PCL500	
450XCF	08-25		
250/300XCW	06-25		
450XCFW	23-25		
350/500XWF	24-25		
HUSABERG	YEARS	PART	
FE250		PCL500	
FE350			
FE501			
FX450			
TE250			
TE300			
HUSQVARNA	YEARS	PART	
TC65	18-25	PCL502	
TC85	14-25		
FC250/350/450	14-15	PCL500	
TC125	14-21	PCL503	
TC250	14-15		
TC250	17-21		
FC250/350/450	16-21		
TE150/250/300	14-16	PCL500	
FE250-501			
TE125	14-16	PCL503	
TE150	17-19		
TE150i	20-21		
TE250	17-18		
TE250i	18-21		
TE300	17-18		
TE300i	18-21		
FE250-501	17-21		
TC125	22-25		PCL500
TC150/300	2025		
TC250	22-25		
FC250/350/450	22-25	PCL500	
TX300	22-25		
FX350			
FX450			
TE150i/250i/300i	22-24	PCL505	
FE250-501			
TE125-300	2025	PCL500	
FE250-501			
SHERCO	YEARS	PART	
125SE / SER	15-25	PCL500	
250SE / SER			
300SE / SER			
250SEF / SEFR			
300SEF / SEFR			
450SEF / SEFR			
BETA	YEARS		PART
RR125	19-25		PCL500
RR200			

BETA	YEARS	PART
RR250	13-25	PCL500
RR300		
RR350	12-25	
RR390		
RR430		
RR480		
XTRAINER 250	17-25	
XTRAINER 300	15-25	
TM	YEARS	PART
85JUNIOR	10-25	PCL500
144MX/EN		
250MX/EN		
300MX/EN		
450MX/EN		
GAS GAS	YEARS	PART
EC250	18-19	PCL503
EC300		
XC200/250/300		
MC65	21-25	PCL502
GAS GAS	YEARS	PART
MC85	21-25	PCL502
MC125	21-22	
MC250	2022	PCL505
MC250F	21-22	
MC350F	2022	
MC450F	21-22	
MC125/250	23-25	
MC150/300	2025	
MC250F/350F		
MC450F		
EC125	2025	PCL505
EC250/300	21-25	
EC250F		
EC350F		
EC450F/500F	24-25	
EX250/300		
EX250F		
EX350F		
EX450F		
FANTIC	YEARS	PART
XX125	21-25	PCL101
XX250	22-25	
XXF250		
XXF450		
XE125	21-25	
TRIUMPH	YEARS	PART
TF 250-X	24-25	PCL500

# PIVOT CLUTCH LEVER ASSEMBLY

- > Universal 2 stroke / 4 stroke with easy adjuster
- > Adjustable reach system
- > Prevents broken lever in the event of a crash
- > Aluminium flex lever



COLOUR	PART
Red Adjuster	CPCL1
Blue adjuster	CPCL2
Black adjuster	CPCL3

# BRAKE LEVER - OEM TYPE

- > Cold forged from high quality aluminium
- > Will not snap as easily as cast levers
- > Direct replacements for OEM levers
- > Black anodised finish



YAMAHA	YEARS	PART	
YZ65	18-25	OBL100	
YZ85	01-25		
YZ125/250	01-07		
YZ250F	01-06		
YZ450F	01-07		
WR250F	01-16		
WR450F	01-15		
YZ125/250	08-25	OBL101	
YZ250F	07-25		
YZ450F	08-25		
YZ125X	17-25		
YZ250X	16-25		
YZ250FX	15-25		
YZ450FX	16-25		
WR250F	17-25		
WR450F	16-25		
HONDA	YEARS		PART
CR80/85R	98-07	OBL201	
CRF150R	07-25		
CRF150F/230F	03-17		
CR125R/250R	92-07		
CRF250R	04-06		
CRF450R	02-06		
CRF250X	04-17		
CRF450X	05-17		
CRF250R/450R	07-25		OBL200
CRF250RX	19-25		
CRF450RX	17-25		
KAWASAKI	YEARS	PART	
KX65	00-25	OBL100	
KX85	01-25		
KX100	01-21		
KX125/250	00-08		
KLX450R	08-15		
KX250F /450F	04-12		

KAWASAKI	YEARS	PART
KLX300R	2020	
KX250F	13-20	OBL101
KX250	21-25	OBL300
KX450F	13-18	OBL101
KX450	19-23	OBL300
KX450	24-25	OBL503
KX250X	21-23	OBL300
KX450X	21-23	OBL300
KX450X	24-25	OBL503
SUSUKI	YEARS	PART
RM85	05-19	OBL100
RM125	04-08	OBL100
RM250	04-08	
RMZ250	04-25	
RMZ450	04-25	
RMX450Z	10-17	
KTM	YEARS	PART
65SX	14-25	OBL502
85SX	13-25	OBL502
125-250 SX	05-13	OBL500
250-450 SXF		
250-300 EXC		
250-500 EXCF		
125-250 SX	14-25	OBL503
300SX	23-25	
250-450 SXF	14-25	
150EXC TPI	20-25	
250EXC TPI	18-25	
300EXC TPI		
250-300 EXC	14-25	
250-500 EXCF		
125XC	21-25	
300XC	14-25	
250-450XCF		
125XCW	2025	

KTM	YEARS	PART
250/300XCW	14-25	OBL503
450XCFW		
350/500XWF		
HUSABERG	YEARS	PART
FE 250-501	05-13	OBL500
FX450		
TE 250-300		
HUSQVARNA	YEARS	PART
2 STROKE	01-13	OBL500
4 STROKE	04-13	OBL500
TC65	18-25	OBL502
TC85	14-25	OBL502
TC125	14-17	OBL503
FC 250-450		
TE 125-300		
TC250		
FE 250-501		
TC125		
FC 250-450		
TE150i	20-21	
TE250i/300i	18-21	OBL504
TE125-300		
FE 250-501		
TE125	22-24	OBL505
TE150i-300i	22-24	OBL505
FE 250-501		
125-501TE/FE	2025	OBL503
TC125-250	19-25 (not 18)	OBL503
TC150/300	2025	
FC 250-450		
TX300	22-25	
FX350/450		
SHERCO	YEARS	PART
125SE / SER	18-25	OBL503
250-300 SE/SER	15-25	



## BRAKE LEVER - OEM TYPE CONT'D

SHERCO	YEARS	PART
250-450 SEF/SEFR	15-25	OBL503
BETA	YEARS	PART
RR 125-200	19-25	OBL201
RR 250-300	13-25	
RR 350-480	08-25	
XTRAINER 250	17-25	
XTRAINER 300	15-25	
GASGAS	YEARS	PART
EC 250/300	00-19	OBL201
EC 250F/300F	10-15	OBL201
MC 65/85	21-25	OBL502
MC125	21-22	OBL503

GASGAS	YEARS	PART
MC250	2022	OBL503
MC250F/450F	21-22	
MC350F	2022	OBL505
MC 125/250	23-25	
MC150/300	2025	
MC250F-450F	23-25	
EC125	2025	
EC 250/300	21-25	
EC 250F-500F		
EC450F/500F	2025	OBL505
EX250/300		
EX250F-450F		

TM	YEARS	PART
85JUNIOR	15-17	OBL500
85JUNIOR	18-25	OBL503
144MX/EN	15-19	OBL201
250/300MX/EN		
450MX/EN		
144/250MX/EN	20-25	OBL503
300MX/EN		
450MX/EN		
STARK FUTURE	YEARS	PART
Varg	23-25	OBL503
TRIUMPH	YEARS	PART
TF 250-X	24-25	OBL503

## CLUTCH LEVER - OEM TYPE

- > Cold forged from high quality aluminium
- > Clutch Japanese Models with cable Feature a Bearing for a smooth operation

- > Will not snap as easily as cast levers
- > Direct replacements for OEM levers
- > Black anodised finish

YAMAHA	YEARS	PART	
YZ125/250	00-14	OCL100	
YZ250F/450F	01-09		
YZ65	18-25	OCL101	
YZ 85-250	15-25		
YZ250F/450F	10-25		
YZ125X	17-25		
YZ250X	16-25		
YZ250FX	20-25		
YZ450FX	19-25		
WR250F	2025		
WR450F	24-25		
WR250F	03-24		OCL102
WR450F	03-23	OCL102	
HONDA	YEARS	PART	
CR125R-250R	04-07	OCL200	
CRF250R	04-25		
CRF450R	04-20		
	21-25	OCL201	
CRF250X	04-17	OCL200	
CRF450X	05-19		
CRF250RX	19-25		
CRF450RX	17-20		
	21-25		OCL201
KAWASAKI	YEARS	PART	
KX65	00-25	OCL300	
KX85	98-25		
KX125	90-05		
KX250	90-04		

KAWASAKI	YEARS	PART
KX250F	04	OCL300
KX125	06-08	OCL100
KX250	05-08	
KX250F	05-20	
KX250	21-25	OCL301
KX450F	06-18	OCL100
KX450	19-25	OCL301
KX250X/450X	21-25	
SUSUKI	YEARS	PART
RMZ250	07-25	OCL300
RMZ450	05-25	
KTM	YEARS	PART
65SX	14-25	OCL502
85SX	13-25	
125SX	09-15	OCL503
	16-25	OCL500
150SX	09-15	OCL503
	16-25	OCL500
250SX	06-25	
300SX	23-25	OCL500
250SXF	07-25	OCL500
350SXF	10-25	
450SXF	09-12	OCL503
	13-25	OCL500
125EXC	09-16	OCL503
150EXC TPI	20-25	OCL500
200EXC	09-16	OCL503
250EXC	06-18	OCL500



KTM	YEARS	PART
250EXC TPI	18-25	OCL500
300EXC	06-25	
300EXC TPI	18-25	
250EXCF	06-25	
350EXCF	12-25	
450-500 EXC/EXCF	07-25	
125XC	21-25	
300XC	06-19	
250XCF	07-25	
350XCF	12-25	
450XCF	08-25	
125XCW	2025	
250/300XCW	06-25	
450XCWF	23-25	
350/500XWF	24-25	
HUSABERG	YEARS	PART
FE250-501		OCL500
FX450		
TE250-300		
HUSQVARNA	YEARS	PART
TC65	18-25	OCL502
TC85	14-25	OCL502
FC250/350/450	14-15	OCL500

## CLTUCH LEVER - OEM TYPE CONT'D

HUSQVARNA	YEARS	PART	
TC125	14-21	OCL503	
TC250	14-15		
TC250	17-21		
FC250/350/450	16-21		
TE150/250/300	14-16	OCL500	
FE250-501			
TE125	14-16	OCL503	
TE150	17-19		
TE150i	20-21		
TE250/300	17-18		
TE250i/300i	18-21		
FE250-501	17-21		
TC125/250	22-25		OCL500
TC150/300	2025		
FC250/350/450	22-25		OCL500
TX300	22-25		
FX350/450	22-25	OCL500	
TE150i/250i/300i	22-24	OCL505	
FE250-501			
TE125-300	2025	OCL500	
FE250-501			

SHERCO	YEARS	PART
125-300 SE/SER	15-25	OCL500
250-450 SEF/SEFR		
BETA	YEARS	PART
RR 125-200	19-25	OCL500
RR 250-300	13-25	
RR 350-480	12-25	
XTRAINER 250/300	15-25	
TM	YEARS	PART
85JUNIOR	10-25	OCL500
144MX/EN		
250MX/EN		
300MX/EN		
450MX/EN		
GASGAS	YEARS	PART
EC250/300	18-19	OCL503
XC200/250/300		
MC65/85	21-25	OCL502
MC125	21-22	OCL500
MC250	2022	
MC250F/450F	21-22	
MC350F	2022	

GASGAS	YEARS	PART
MC125/250	23-25	OCL505
MC150/300	2025	
MC250F-450F		
EC125	2025	
EC 250-300	21-25	OCL505
EC 250F-350F		
EC 450F/500F	24-25	OCL505
250-450 EX/EXF		
FANTIC	YEARS	PART
XX125 /250	21-25	OCL101
XXF250/450		
XE125		
TRIUMPH	YEARS	PART
TF 250-X	24-25	OCL500

## GEAR PEDALS

- › Forged aluminium
- › CNC machined anodised tip
- › Knurled tip for improved gear shifts
- › Replacement shift tips available in five colours



YAMAHA	YEARS	BLUE	RED	ORANGE	BLACK
YZ65	18-25	GSL408			
YZ85	99-25	GSL408			
YZ125	96-04				GSL420BK
	05-25	GSL403			GSL403BK
YZ250	96-98				GSL420BK
	05-25	GSL403			GSL403BK
YZ125X	17-25	GSL403			GSL403BK
YZ250X	16-25	GSL403			GSL403BK
YZ250F	06-13	GSL407			
	14-16	GSL410			
YZ450F	06-13	GSL407			
	14-16	GSL410			
YZ250F	17-18	GSL411			
	19-25	GSL413			GSL413BK
YZ450F	17	GSL411			
	18-25	GSL413			GSL413BK
WR250F	07-14	GSL407			
	15-16	GSL410			

YAMAHA	YEARS	BLUE	RED	ORANGE	BLACK
WR250F	17-18	GSL411			
	20-25	GSL413			GSL413BK
WR450F	07-14	GSL407			
	15-16	GSL410			
	17-18	GSL411			
	19-25	GSL413			GSL413BK
YZ250FX	15-16	GSL410			
	17-19	GSL411			
	20-25	GSL413			GSL413BK
YZ450FX	17-18	GSL411			
	19-25	GSL413			GSL413BK
HONDA	YEARS	BLUE	RED	ORANGE	BLACK
CRF110F	13-25		GSL194		
CRF150F	03-17		GSL185		
CRF150R	07-25		GSL112		
CRF230F	03-19		GSL185		
CR125R	87-07		GSL101		
CR250R	04-07		GSL102		

# GEAR PEDALS CONT'D

HONDA	YEARS	BLUE	RED	ORANGE	BLACK
CRF250R	04-09				GSL133BK
	10-17		GSL115		
	18-25		GSL121		
CRF450R	08-16		GSL114		
	17-25		GSL121		
CRF250RX	19-25		GSL121		
CRF450RX	17-25				
CRF450L	19-20				
CRF 250X	04-19				GSL133BK
CRF450X	19-24		GSL121		
CRF250RW	2025		GSL121		
CRF450RW	24-25		GSL121		
CRF450RWE	19-22		GSL121		
KAWASAKI	YEARS	BLUE	RED	ORANGE	BLACK
KX80	81-00	GSL207			
KX85	98-25	GSL207			
KX125	94-02				GSL326BK
KX250	94-08				
KX250F	09-18	GSL211			
KX250	19-25				
KX450F	09-15	GSL212			
	16-18	GSL216			
KX450	19-25				
KX250X	21-25	GSL211			
KX450X	21-25	GSL216			
SUZUKI	YEARS	BLUE	RED	ORANGE	BLACK
RM85	89-25		GSL303		
RMZ250	08-25		GSL307		
RMZ450	08-25		GSL308		
RMX450Z	10-19				
KTM	YEARS	BLUE	RED	ORANGE	BLACK
65SX	09-23			GSL508	GSL508BK
65SX	09-25				GSL518BK
85SX	03-17	GSL504B		GSL504	
	18-25	GSL515B		GSL515	GSL515BK
125SX	90-15	GSL501B		GSL502	GSL501BK
150SX	90-15				
125EXC	90-16				
200EXC	90-15				
125SX	2016	GSL509B		GSL509	
	17-22	GSL515B		GSL515	GSL515BK
	23-25				GSL517BK
150SX	2016	GSL509B		GSL509	GSL509BK
	17-22	GSL515B		GSL515	GSL515BK
	2025				GSL517BK
250SXF	06-10			GSL506	
	11-25	GSL501B		GSL501	GSL501BK
250EXCF	06-10			GSL506	
	11	GSL501B		GSL502	GSL501BK
	12-25	GSL501B		GSL501	GSL501BK
250SX	94-16			GSL506	
	17-22	GSL501B		GSL501	GSL501BK

KTM	YEARS	BLUE	RED	ORANGE	BLACK
250SX	23-25				GSL517BK
150EXC	20-23	GSL515B		GSL515	GSL515BK
	24-25				GSL517BK
250EXC	94-16			GSL506	
	17-18	GSL501B		GSL501	GSL501BK
	18-23	GSL501B		GSL501	GSL501BK
	24-25				GSL517BK
300SX	94-16			GSL506	
	17-18	GSL501B		GSL501	GSL501BK
	23-25				GSL517BK
300EXC	94-16			GSL506	
300EXC	17-23	GSL501B		GSL501	GSL501BK
300EXC	18-23	GSL501B		GSL501	GSL501BK
	24-25				GSL517BK
350SXF	11-25	GSL501B		GSL501	GSL501BK
350EXCF	11-25	GSL501B		GSL501	GSL501BK
450SXF	07-12	GSL501B		GSL502	
	13-15	GSL501B		GSL501	GSL501BK
	16-22	GSL509B		GSL509	GSL509BK
	23-25	GSL501B		GSL501	GSL501BK
450EXCF	07-12	GSL501B		GSL502	
	14-16	GSL501B		GSL501	GSL501BK
	17-23	GSL509B		GSL509	GSL509BK
	24-25	GSL501B		GSL501	GSL501BK
500EXCF	17-23	GSL509B		GSL509	GSL509BK
	24-25	GSL501B		GSL501	GSL501BK
450SMR	24-25	GSL501B		GSL501	GSL501BK
690 DUKE	08-19	GSL514BL		GSL514	
690 ENDURO R	14-24				
690 SUPERMOTO	08-09				
690 SMC	08-11				
690 SMC R	12-25				
125XC	21-23	GSL515B		GSL515	GSL515BK
150XC	10-14	GSL501B		GSL502	GSL501BK
200XC	06-09	GSL501B		GSL502	GSL501BK
250XC	06-14			GSL506	
250XC	18-19	GSL501B		GSL501	GSL501BK
250XC TPI	20-22	GSL501B		GSL501	GSL501BK
300XC	06-14			GSL506	
300XC	17-19	GSL501B		GSL501	GSL501BK
300XC TPI	20-22	GSL501B		GSL501	GSL501BK
150XCW	17-23	GSL515B		GSL515	GSL515BK
200XCW	06-16	GSL501B		GSL502	GSL501BK
250XCW	06-16			GSL506	
250XCW	17-23	GSL501B		GSL501	GSL501BK
250XCW TPI	18-22	GSL501B		GSL501	GSL501BK
300XCW	06-16			GSL506	
300XCW	17-18	GSL501B		GSL501	GSL501BK
300XCW TPI	19-23	GSL501B		GSL501	GSL501BK
450XCW	07-16	GSL501B		GSL501	GSL501BK
500XCW	12-16	GSL501B		GSL501	GSL501BK
250XCF	07-09			GSL506	

# GEAR PEDALS CONT'D

KTM	YEARS	BLUE	RED	ORANGE	BLACK
250XCF	13-15	GSL501B		GSL502	GSL501BK
250XCF	16-23	GSL501B		GSL501	GSL501BK
250XCFW	09-11	GSL501B		GSL502	GSL501BK
250XCFW	12-16	GSL501B		GSL501	GSL501BK
350XCFW	12-21	GSL501B		GSL501	GSL501BK
350XCF	12-15	GSL501B		GSL502	GSL501BK
350XCF	16-23	GSL501B		GSL501	GSL501BK
450XCF	13-15	GSL501B		GSL501	GSL501BK
125/300XC	24-25				GSL517BK
250XCF	16-25	GSL501B		GSL501	GSL501BK
350/450XCF	24-25	GSL501B		GSL501	GSL501BK
150-300XCW	24-25				GSL517BK
HUSQVARNA	YEARS	BLUE	RED	ORANGE	BLACK
TC65	17-24			GSL508	GSL508BK
TC65	17-25				GSL518BK
TC85	14-17	GSL504B		GSL504	
	18-25	GSL515B		GSL515	GSL515BK
TC125	2016	GSL509B		GSL509	GSL509BK
	17-22	GSL515B		GSL515	GSL515BK
	23-25				GSL517BK
TC150/300	2025				GSL517BK
TC250	17-22	GSL501B		GSL501	GSL501BK
	23-25				GSL517BK
TE125	14-16	GSL501B		GSL501	GSL501BK
	17-19	GSL515B		GSL515	GSL515BK
	2025				GSL517BK
TE150	17-19	GSL515B		GSL515	GSL515BK
	20-23	GSL515B		GSL515	GSL515BK
	24-25				GSL517BK
TE250	17-18	GSL501B		GSL501	GSL501BK
TE250i	18-23				
	24-25				GSL517BK
TE300	17-18	GSL501B		GSL501	
	18-23				
	24-25				GSL517BK
TX300	23-25				GSL517BK
FC250/350	14-25	GSL501B		GSL501	GSL501BK
FC450	16-22	GSL509B		GSL509	GSL509BK
	23-25	GSL501B		GSL501	GSL501BK
FE250/350	15-25	GSL501B		GSL501	GSL501BK
FE450	17-24	GSL509B		GSL509	GSL509BK
	24-25	GSL501B		GSL501	GSL501BK
FE501	17-23	GSL509B		GSL509	GSL509BK
	24-25	GSL501B		GSL501	GSL501BK
FS450	16-23	GSL509B		GSL509	GSL509BK
	24-25	GSL501B		GSL501	GSL501BK
FX350	17-25	GSL501B		GSL501	GSL501BK
FX450	23-25				
701 ENDURO	16-25	GSL514BL		GSL514	
701 SUPERMOTO	16-25	GSL514BL		GSL514	
SHERCO	YEARS	BLUE	RED	ORANGE	BLACK
125SE/SER	17-25	GSL610			

SHERCO	YEARS	BLUE	RED	ORANGE	BLACK
250/300SER	14-25	GSL610			
250-450SE/SEFR	15-25	GSL620			
BETA	YEARS	BLUE	RED	ORANGE	BLACK
RR125	13-25		GSL608		
RR200	19-25				
RR250/300	13-25				
RR350-480	13-19				
XTRAINER 250	17-25				
XTRAINER 300	15-25				
RR350-480	20-25		GSL617		
GAS GAS	YEARS	BLUE	RED	ORANGE	BLACK
EC125-300	98-19		GSL601		
MC65	21-23			GSL508	GSL508BK
MC65	21-25				GSL518BK
MC85	21-25	GSL515B		GSL515	GSL515BK
GAS GAS	YEARS	BLUE	RED	ORANGE	BLACK
MC125	21-23	GSL515B		GSL515	GSL515BK
MC125	24-25				GSL517BK
MC150/300	2025				GSL517BK
MC250	22-23	GSL501B		GSL501	GSL501BK
MC250	24-25				GSL517BK
MC250F	21-25	GSL501B		GSL501	GSL501BK
MC350F	22-25	GSL501B		GSL501	GSL501BK
MC450F	21-25	GSL509B		GSL509	GSL509BK
MC450F	24-25	GSL501B		GSL501	GSL501BK
EC125	2025				GSL517BK
EC250/300	21-23	GSL501B		GSL501	GSL501BK
EC250/300	24-25				GSL517BK
EC250F/350F	21-25	GSL501B		GSL501	GSL501BK
EC450F/500F	24-25	GSL501B		GSL501	GSL501BK
EX250/300	24-25				GSL517BK
EX250F/350F	21-25	GSL501B		GSL501	GSL501BK
EX300F	2022	GSL501B		GSL501	GSL501BK
EX450F	24-25	GSL501B		GSL501	GSL501BK
FANTIC	YEARS	BLUE	RED	ORANGE	BLACK
XX125	21-24	GSL403			GSL403BK
XX250	22-24				
XXF250	22-24	GSL413			GSL413BK
XXF450	22-24				
XE125	21-24	GSL403			GSL403BK
XEF250/450	22-24	GSL413			GSL413BK
TM	YEARS	BLUE	RED	ORANGE	BLACK
85JUNIOR	00-25	GSL613			
125/144MX/EN	00-25				
250MX/EN 2 ST	00-18				
300MX/EN 2 ST	00-18				
250MX/EN 4 ST	00-25				
300MX/EN 4 ST	00-25				
450MX/EN	00-25				
250MX/EN 2 ST	19-24	GSL516			
300MX/EN 2 ST					
TRIUMPH	YEARS	BLUE	RED	ORANGE	BLACK
TF 250-X	24-25		GSL121		

## REPLACEMENT SHIFT TIP

- › CNC machined anodised tip
- › Includes pin, spring, retainer clip
- › Available in five colours

COLOUR	PART
Black	GSLT1
Blue	GSLT2
Red	GSLT3
Orange	GSLT4
Green	GSLT5



## REAR BRAKE PEDALS

- › Manufactured from aluminium to keep the weight to a minimum
- › Adjustable brake tip placement, 3 positions : backward / standard / frontward
- › Optimized grip thanks to stainless steel teeth
- › Cold forged to improve the strength
- › Brake snake cable
- › Anodised



YAMAHA	YEARS	BLACK
YZ125/250	00-25	RBP101BK
YZ125X	20-25	
YZ250X	16-25	
YZ250F	10-23	RBP102BK
YZ250F	24-25	RBP103BK
YZ250FX	15-21	RBP102BK
WR250F	15-21	RBP102BK
YZ450F	10-25	RBP103BK
YZ450FX	16-24	
WR250F	2025	
WR450F	12-24	
HONDA	YEARS	BLACK
CRF250R	10-25	RBP203BK
CRF250RX	19-25	
CRF450R	05-25	
CRF450RX	17-25	
CRF450RWE	19-25	
KAWASAKI	YEARS	BLACK
KX250/250X	21-25	RBP303BK
KX450F	06-18	
KX450	19-25	
KX450X	21-25	
KTM	YEARS	BLACK
65SX	09-23	RBP501BK
85SX	18-25	RBP502BK
125/150SX	17-22	RBP503BK
250SX	19-22	RBP504BK
250/350/450SXF	17-22	RBP503BK
125-300SX	23-25	RBP506BK
150SX	2025	
250/300SX	23-25	RBP506BK
250-450SXF		

KTM	YEARS	BLACK
150EXC	2023	RBP504BK
150EXC TPI	20-23	
250EXC	17-13	
250EXC TPI	18-23	
250EXCF	17-23	
300EXC	17-23	
300EXC TPI	18-23	
350EXCF	17-23	
450EXCF	17-23	RBP503BK
500EXC	2020	
500EXCF	17-23	
125-300EXC	24-25	RBP506BK
250-500 EXCF	24-25	
125/300XC	23-25	
150-300XCW	24-25	
250 XCF	23-25	
350/450XCF	23-25	
450SMR	24-25	
HUSQVARNA	YEARS	BLACK
TC65	17-23	RBP501BK
TC85	18-25	RBP502BK
TC 125/250	17-22	RBP503BK
TC 250		RBP504BK
FC 250-450		RBP503BK
TC125/250	23-25	RBP506BK
FC250-450	23-25	RBP506BK
TX300		
FX350/450		
TE150-300	17-23	RBP504BK
TE150i	20-23	
TE250i/300i	18-23	RBP504BK
FE250/350	17-23	

HUSQVARNA	YEARS	BLACK
FE450/501	18-23	RBP504BK
TE125	2025	RBP506BK
TE150	24-25	
FE350-501	24-25	
FS450	24-25	
GASGAS	YEARS	BLACK
MC65	21-23	RBP501BK
MC85	21-25	RBP502BK
MC125	21-23	RBP503BK
MC250	22-23	RBP504BK
MC250F	21-23	RBP503BK
MC350F	22-23	RBP503BK
MC450F	21-23	RBP504BK
EC250/300		
EC250F/350F		
MC125/250	24-25	RBP506BK
MC150/300	2025	
MC250F-450F	24-25	
EC125	2025	
250-500EC/ECF	24-25	
250-450EX/EXF		
FANTIC	YEARS	BLACK
XX/XE125	21-25	RBP101BK
XX250	22-25	
XXF/XEF250	22-24	RBP102BK
XXF/XEF450	22-25	RBP103BK
XXF/XEF250	2025	RBP103BK
STARK FUTURE	YEARS	BLACK
Varg (oem lever)	23-25	OCL502
Varg (flex lever)	23-25	PCL502

# FRONT SPROCKET

- > Ultralight - with drilled holes for lower weight
- > Top grade hardened steel
- > CNC Machined
- > Special coating for extra durability"



YAMAHA	YEARS	12T	13T	14T
YZ125	05-25		SFS13013	SFS13014
YZ125X	20-25			
YZ250F/WR250F	01-25			
WR250R	08-21			
WR250X	08-14			
YZ250	99-24		SFS14013	SFS14014
YZ250X	16-25			
YZ450F	03-25			
YZ450FX	16-25			
YFZ450	04-08			
WR450F	03-25			
HONDA	YEARS	12T	13T	14T
CRF250R	18-21		SFS23013	
CRF250RX	19-21			
CR250	88-07		SFS24013	SFS24014
CR500	88-01			
CRF250R/RX	22-25			
CRF250RWE	19-25			
CRF450R	02-25			
CRF450RX	17-25			
CRF450RL	21-25			
CRF450X	05-25			
SUSUKI	YEARS	12T	13T	14T
RMZ250	13-24		SFS43013	SFS43014
RMZ450	08-24		SFS44013	SFS44014
KAWASAKI	YEARS	12T	13T	14T
KX250	99-08		SFS14013	SFS14014
KX450F	06-18			
KX450	19-25			
KX450X	21-25			
KLX450R	08-21			
KX250F	06-18		SFS34013	SFS34014
KX250	19-25			
KX250	21-25			
BETA	YEARS	12T	13T	14T
RR125	18-25	SFS53012	SFS53013	SFS53014
RR200	19-25			
RR250/300	13-25			
RR350	11-25			
RR390/430/480	15-25			
RR400/450	05-18			
RR498	12-18			
RR525	05-09			
RX300	23-25			
RX450	24-25			
XTRAINER250	17-25			
XTRAINER300	15-25			
STARK FUTURE	YEARS	12T	13T	14T
Varg	23-25	SFS53012	SFS53013	SFS53014
TRIUMPH	YEARS	12T	13T	14T
TF 250-X	24-25		SFS93013	

KTM	YEARS	12T	13T	14T	15T
65SX	00-23			SFS51014	
65SX	24-25			SFS51114	
85SX	04-25	SFS53012	SFS52013	SFS52014	
125-500 SX/ SX-F/EXC/ EXC-F /XC/ XCF/XCFW	87-25		SFS53013	SFS53014	
400LC4	94-02				SFS53515
400SX	00-10				
600LC4	89-93				
640DUKE	99-08				
690DUKER	12-19				
690ENDUROR	14-25				
690SMCR	12-25				
HUSQVARNA	YEARS	12T	13T	14T	15T
TC65	18-23			SFS51014	
TC65	24-25			SFS51114	
TC85	14-25		SFS52013	SFS52014	
125-501 TC/ TE/FC/FE/ TX/FX	14-25	SFS53012	SFS53013	SFS53014	
701ENDURO	16-25				SFS53515
701SUPERMOTO	15-25				
GASGAS	YEARS	12T	13T	14T	15T
MC65	21-23			SFS51014	
MC65	24-25			SFS51114	
MC85	21-25		SFS52013	SFS52014	
125-450 MC/ MC-F/EC/EC-F /EX/EXF	21-25	SFS53012	SFS53013	SFS53014	
EC450F/500F EX450F	24-25				
MC150/300 EC125	2025				
ES700/SM700	22-25				SFS53515
HUSABERG	YEARS	12T	13T	14T	15T
FE250/350	12-14	SFS53012	SFS53013	SFS53014	
FE450	09-14				
FE501	13-14				
FE570	09-11				
FS570	10-11				
FX450	10-12				
TE125	12-14				
TE250/300	10-14				
FANTIC	YEARS	12T	13T	14T	15T
XX/XE125 XXF/XEF250	21-25		SFS13013	SFS13014	
XX250 XXF/XEF450	22-25		SFS14013	SFS14014	

# ALUMINIUM SPROCKET

- › CAD-designed and CNC machined using state-of-the-art technology
- › Optimised for maximum strength and lowest weight
- › Aviation-grade 7075-T6 aluminium alloy — the best material available
- › Self-cleaning grooves between each tooth to prevent mud build-up
- › Colour anodized coated surface for extra durability



YAMAHA	YEARS	CHAIN	COLOUR	48T	49T	50T	51T	52T
YZ125	99-25	520	BLUE	SRS130-48BL	SRS130-49BL	SRS130-50BL	SRS130-51BL	SRS130-52 BL
YZ250	99-25	520	BLACK	SRS130-48BK	SRS130-49BK	SRS130-50BK	SRS130-51 BK	SRS130-52 BK
YZ125X	17-25							
YZ250X	16-25							
YZ250F	01-25							
YZ450F	03-25							
WR250F	03-25							
WR450F	03-25							
YZ250FX	15-25							
YZ450FX	16-25							
HONDA	YEARS	CHAIN	COLOUR	48T	49T	50T	51T	52T
CR125R	87-07	520	RED	SRS230-48RD	SRS230-49RD	SRS230-50RD		
CR250R	88-07	520	BLACK	SRS230-48BK	SRS230-49BK	SRS230-50BK		
CR500	88-01							
CRF250R	04-25							
CRF450R	02-25							
CRF250X	04-17							
CRF450X	05-17							
CRF250RX	19-25							
CRF450RX	17-25							
CRF150F/230F	03-19							
CRF250F	19-25							
CRF450L	19-20							
CRF450RL	21-23							
KAWASAKI	YEARS	CHAIN	COLOUR	48T	49T	50T	51T	52T
KX125	94-08	520	BLACK		SRS330-49BK	SRS330-50BK	SRS330-51BK	
KX250	99-08							
KX250F	04-18							
KX250	19-25							
KX450F	06-18							
KX450	19-25							
KLX450R	08-15							
KX250X	21-25							
KX450X	21-25							
SUZUKI	YEARS	CHAIN	COLOUR	48T	49T	50T	51T	52T
RM125	92-08	520	BLACK	SRS430-48BK	SRS430-49BK	SRS430-50BK		
RM250	82-09							
RMZ250	07-25							
RMZ450	05-25							
RMX450Z	10-17							

# ALUMINIUM SPROCKET CONT'D

KTM	YEARS	CHAIN	COLOUR	48T	49T	50T	51T	52T
65SX	98-25	420	ORANGE	SRS510-48OR		SRS510-50OR		
			BLUE	SRS510-48BL		SRS510-50BL		
			BLACK	SRS510-48BK		SRS510-50BK		
85SX	04-25	428	ORANGE	SRS520-48OR	SRS520-49OR	SRS520-50OR		
			BLUE	SRS520-48BL	SRS520-49BL	SRS520-50BL		
			BLACK	SRS520-48BK	SRS520-49BK	SRS520-50BK		
125-500 SX/SXF/EXC/EXCF	93-25	520	ORANGE	SRS530-48OR	SRS530-49OR	SRS530-50OR	SRS530-51OR	SRS530-52OR
125-500 SX/SXF/EXC/EXCF	93-25	520	BLUE	SRS530-48BL	SRS530-49BL	SRS530-50BL	SRS530-51BL	
125-500 SX/SXF/EXC/EXCF	93-25	520	BLACK	SRS530-48BK	SRS530-49BK	SRS530-50BK	SRS530-51BK	SRS530-52BK
HUSQVARNA	YEARS	CHAIN	COLOUR	48T	49T	50T	51T	52T
TC65	17-25	420	BLUE	SRS510-48BL		SRS510-50BL		
			BLACK	SRS510-48BK		SRS510-50BK		
TC85	14-25	428	BLUE	SRS520-48BL	SRS520-49BL	SRS520-50BL		
			BLACK	SRS520-48BK	SRS520-49BK	SRS520-50BK		
125-501 TC/FC/TX/TE/FE/FX	14-25	520	BLUE	SRS530-48BL	SRS530-49BL	SRS530-50BL	SRS530-51BL	
125-501 TC/FC/TX/TE/FE/FX	14-25	520	BLACK	SRS530-48BK	SRS530-49BK	SRS530-50BK	SRS530-51BK	SRS530-52BK
HUSABERG	YEARS	CHAIN	COLOUR	48T	49T	50T	51T	52T
250-501 FE/TE	04-14	520	BLUE	SRS530-48BL	SRS530-49BL	SRS530-50BL	SRS530-51BL	
SHERCO	YEARS	CHAIN	COLOUR	48T	49T	50T	51T	52T
125SER	18-25	520	BLUE	SRS630-48BL	SRS630-49BL	SRS630-50BL	SRS630-51BL	
250SER/ 250/300SEFR	14-25							
300SER	12-25							
450SEFR	15-25							
GAS GAS	YEARS	CHAIN	COLOUR	48T	49T	50T	51T	52T
EC125	00-13	520	BLUE	SRS630-48BL	SRS630-49BL	SRS630-50BL	SRS630-51BL	
EC200	00-17							
EC250	00-19							
EC250F	11-17							
EC300	00-19							
EC300F	13-15							
EC450F	03-15							
XC200/300	18-19							
XC250	17-19							
MC65	21-25	420	BLUE	SRS510-48BL		SRS510-50BL		
			BLACK	SRS510-48BK		SRS510-50BK		
MC85	21-25	428	BLUE	SRS520-48BL	SRS520-49BL	SRS520-50BL		
			BLACK	SRS520-48BK	SRS520-49BK	SRS520-50BK		
MC150/300 EC125	2025	520	BLUE	SRS530-48BL	SRS530-49BL	SRS530-50BL	SRS530-51BL	
MC150/300 EC125	2025	520	BLACK	SRS530-48BK	SRS530-49BK	SRS530-50BK	SRS530-51BK	SRS530-52BK
125-450 MC/MCF/EC/ECF	21-25	520	BLUE	SRS530-48BL	SRS530-49BL	SRS530-50BL	SRS530-51BL	
125-450 MC/MCF/EC/ECF	21-25	520	BLACK	SRS530-48BK	SRS530-49BK	SRS530-50BK	SRS530-51BK	SRS530-52BK
FANTIC	YEARS	CHAIN	COLOUR	48T	49T	50T	51T	52T
XX125-250	21-25	520	BLUE	SRS130-48BL	SRS130-49BL	SRS130-50BL	SRS130-51BL	SRS530-5BL
XX250 / XXF250-450	22-25							
XE125	21-25							
XE250-450	22-25							
STARK FUTURE	YEARS	CHAIN	COLOUR	48T	49T	50T	51T	52T
Varg	23-25	520	BLACK	SRS530-48BK	SRS530-49BK	SRS530-50BK	SRS530-51BK	SRS530-52BK
TRIUMPH	YEARS	CHAIN	COLOUR	48T	49T	50T	51T	52T
TF 250-X	24-25	520	BLACK	SRS530-48BK	SRS530-49BK	SRS530-50BK	SRS530-51BK	SRS530-52BK



# SPROCKET BOLTS AND NUTS

- › High quality original (OEM) replacement sprocket bolt kit
- › High-tensile strength
- › Corrosion resistant
- › Remember to use manufacturer's torque settings



MODEL	SIZE	PART
European	M8x26mm Torx head bolt (thread patch pre-applied) with Flange Nut	SSBE
Japanese	"M8x31 mm Allen head bolt with flanged Fuji lock nut"	SSBJ

# REAR DISC GUARD

- › The ultimate protection for your rear brake disc
- › Machined from one piece of aluminium
- › Replaces the brake caliper support and provides maximum protection



KTM	YEARS	BLACK	BLUE	RED	ORANGE				
125EXC	04-16	SRDG500BK	SRDG500BL		SRDG500OR				
150EXC	09-23								
150EXC TPI	20-23								
250/300EXC	04-23								
250EXC TPI	18-23								
300EXC TPI	18-23								
250/450EXCF	04-23								
350/500EXCF	12-23								
125/250/300 450 SX/SXF/XC/XCF	23-25					SRDG510BK			
150SX	2025								
125-500 EXC EXCF	24-25								
300-500 EXC 6 DAYS	24-25								
125-300 XCW	24-25								
450XCFW	24-25								
350/500 XWF	24-25								
HUSQVARNA	YEARS	BLACK	BLUE	RED	ORANGE				
TE125	14-16	SRDG500BK	SRDG500BL		SRDG500OR				
TX125/150	17-23								
TE250/300	14-23								
TE150i	20-23								
TE250i/300i	18-23								
FE250-501	14-23								

HUSQVARNA	YEARS	BLACK	BLUE	RED	ORANGE				
TC125/250	23-25	SRDG510BK							
TC150/300	2025								
FC250-450	23-25								
TE125	2025								
TE150-300	24-25								
FE250-501	24-25								
TX300	23-25								
FX350/450	23-25								
HUSABERG	YEARS					BLACK	BLUE	RED	ORANGE
All	05-13					SRDG500BK	SRDG500BL		SRDG500OR
SHERCO	YEARS	BLACK	BLUE	RED	ORANGE				
125SE / SER	18-25		SRDG600						
250SE / SER	14-25								
300SE / SER	14-25								
250SEF / SEFR	14-25								
300SEF / SEFR	14-25								
450SEF / SEFR	14-25								
BETA	YEARS					BLACK	BLUE	RED	ORANGE
RR125	08-25			SRDG700					
RR200	19-25								
RR250-480	08-25								
XTRAINER 250	17-25								
XTRAINER 300	15-25								
GAS GAS	YEARS					BLACK	BLUE	RED	ORANGE
EC250/300	21-23	SRDG500BK	SRDG500BL		SRDG500OR				
EC250/350F	21-23	SRDG510BK							

# THROTTLE TUBE & BEARING

- › Bearings ensure a smooth, effortless throttle action
- › Stronger than OEM
- › Available in four colours



YAMAHA	YEARS	BLACK	BLUE	RED	ORANGE
YZ65	18-25		TT102		
YZ125/250	97-25	TT101			
YZ125X	17-25				
YZ250X	16-25				
YZ250F	01-11		TT100B	TT100R	
YZ250F	12-25	TT103			
YZ450F	98-13		TT100B	TT100R	
YZ450F	14-15	TT103			
YZ450F	16-17		TT100B	TT100R	
YZ450F	18-25	TT103			
YZ250FX	15-25				
YZ450FX	16-25				
WR250F	01-14		TT100B	TT100R	
WR250F	15-25	TT103			
WR450F	98-15		TT100B	TT100R	
WR450F	16-25	TT103			
WR250R/X	07-20		TT100B	TT100R	
HONDA	YEARS	BLACK	BLUE	RED	ORANGE
CR125R/250R	89-07	TT501			
CR500R	89-01				
CRF250R	04-25			TT200	
CRF450R	02-25				
CRF250X	04-17				
CRF450X	02-25				
CRF250RX	19-25				
CRF450RX	17-25				
CRF450L	19-20				
CRF450RL	21-25				
KAWASAKI	YEARS	BLACK	BLUE	RED	ORANGE
KX250F	04-18		TT100B	TT100R	
KX250/450	19-25				
KX450F	06-18				
KLX450R	08-14				
KLX125,D-TRACKER125	10-16				
KLX250,D-TRACKER/X	04-20				
KLX230R	21-25				
KLX300R	20-24				
SUZUKI	YEARS	BLACK	BLUE	RED	ORANGE
RMZ250	04-06		TT100B	TT100R	
RMZ250	07-25	TT103			
RMZ450	05-25		TT100B	TT100R	
RMX450Z	10-19				
KTM	YEARS	BLACK	BLUE	RED	ORANGE
50SX	12-20	TT504			
65SX	02-20				
65SX	21-23	TT505			
85SX	03-17	TT501			
85SX	18-25	TT503			

KTM	YEARS	BLACK	BLUE	RED	ORANGE
125SX/EXC	98-16	TT501			
150SX	09-16				
250SX	98-16				
300EXC					
125/150/250 SX	17-22	TT503			
125/250/300 SX	23-25	TT502			
150SX	2025				
250/350/450SXF	00-15				TT500
250-500EXCF	00-16				
250EXC TPI	18-25	TT502			
300EXC TPI	18-25				
250/350/450SXF	16-25				
250-500 EXCF	17-25				
125/300 XC					
250/350/450 XCF					
125XCW	2025				
250/300 XCW	17-25				
450 XCFW					
350/500 XWF					
HUSQVARNA	YEARS	BLACK	BLUE	RED	ORANGE
TC50/65	17-20	TT504			
TC65	21-23	TT505			
TC85	14-17	TT501			
TC85	18-25	TT503			
TC125/250	14-16	TT501			
TE125/250/300					
TC125/250	17-22	TT503			
TX125					
TE150	17-19				
TE250/300	17-18				
TC125	23-25	TT502			
TC250	23-25				
TC150/300	2025				
TX300	23-25				
FE250-501	14-16				TT500
FC250-450	14-15				
TE125	2025	TT502			
TE150i	20-25				
TE250i/300i	18-25				
FC250-450	16-25				
FE250-501	17-25				
FX350-450	17-25				
BETA	YEARS	BLACK	BLUE	RED	ORANGE
RR125	18-25	TT501			
RR200	19-25				
RR250/300	13-25				
XTRAINER 250	17-25				
XTRAINER 300	15-25				

## THROTTLE TUBE & BEARING CONT'D

GAS GAS	YEARS	BLACK	BLUE	RED	ORANGE
MC65	21-23	TT505			
MC85	21-25	TT503			
MC125	21-23	TT502			
MC250	22-23				
MC125/250	24-25				
MC150/300	2025				
MC250F /450F	21-25				
MC350F	22_25				
EC125	2025				
EC250 / EC300	21-25				
EC250F/350F	21-25				
EC450F/EC500F	24-25				
EX250/300	21-25				
EX250F-450F	21-25				

FANTIC	YEARS	BLACK	BLUE	RED	ORANGE
XX/XE125	21-25	TT101			
XX250	22-25	TT101			
XE125	21-25				
XXF250/450	22-25	TT103			
XEF250 / 450					
TRIUMPH	YEARS	BLACK	BLUE	RED	ORANGE
TF 250-X	24-25	TT502			

## HOLESHOT DEVICE

- › Lowers and locks front suspension preventing front wheel lift under acceleration
- › Manufactured from anodised aluminium and steel for weight saving and durability
- › Hinged design enables fitting in minutes — no need to remove the fork leg



YAMAHA	YEARS	DIAMETER	BLACK	BLUE	RED	ORANGE
YZ65	18-25	53,4mm	SLC100BK	SLC100		
YZ85	02-25					
YZ125/250	08-25					
YZ125X	20-25					
YZ250X	16-25					
YZ250F/450F	08-25					
WR250F	15-25					
WR450F	16-25					
YZ250FX	15-25					
YZ450FX	16-25					
HONDA	YEARS	DIAMETER	BLACK	BLUE	RED	ORANGE
CR85R	96-07	48,9mm			SLC200	
CRF150R	07-19					
CR250R	97-07	56,4mm	SLC201BK	SLC201B	SLC201R	
CRF250L	13-16					
CRF250R/450R	04-25					
CRF250RX	19-25					
CRF450RX	17-25					
KAWASAKI	YEARS	DIAMETER	BLACK	BLUE	RED	ORANGE
KX85/100	01-24	53,4mm		SLC100		
KX250F/450F	06-18	56,4mm	SLC201BK	SLC201B	SLC201R	
KX250 /450	19-25					
KX250X/450X	21-25					

SUZUKI	YEARS	DIAMETER	BLACK	BLUE	RED	ORANGE
RM85	02-21	48,9mm			SLC200	
RM125/250	02-08	56,4mm	SLC201BK	SLC201B	SLC201R	
RMZ250/450	07-25					
KTM	YEARS	DIAMETER	BLACK	BLUE	RED	ORANGE
50SX	17-20	45,4mm	SLC501BK	SLC501BL		SLC501
	21-25	43mm	SLC500BK			
SX-E 5	2020	45,4mm	SLC501BK	SLC501BL		SLC501
65SX	02-25	45,4mm	SLC501BK	SLC501BL		SLC501
85SX	03-25	52,9mm	SLC502BK	SLC502BL		SLC502
125SX	03-25	58,4mm	SLC503BK	SLC503BL	SLC503RD	SLC503
150SX	09-25		SLC503BK	SLC503BL	SLC503RD	SLC503
250SX	03-25					
300SX	23-25					
250SXF	06-25					
350SXF	11-25	58,4mm	SLC503BK	SLC503BL	SLC503RD	SLC503
450SXF	03-25					
125EXC	14-17					
150/250EXC	14-25					
150EXC TPI	20-25					
250/300EXC TPI	18-25					
300EXC	14-25					
250-500 EXCF	14-25					
125/300 XC						

# HOLESHOT DEVICE CONT'D

KTM	YEARS	DIAMETER	BLACK	BLUE	RED	ORANGE
125XCW	2025	58,4mm	SLC503BK	SLC503BL	SLC503RD	SLC503
250-450 XCF	14-25					
250/300XCW						
450 XCFW						
350/500XWF						
HUSQVARNA	YEARS	DIAMETER	BLACK	BLUE	RED	ORANGE
TC50	17-20	45,4mm	SLC501BK	SLC501BL		SLC501
	21-25	43mm	SLC500BK			
EE 5	2020	45,4mm	SLC501BK	SLC501BL		SLC501
TC65	17-25					
TC85	14-25	52,9mm	SLC502BK	SLC502BL		SLC502
TC125/250	14-25	58,4mm	SLC503BK	SLC503BL	SLC503RD	SLC503
TC150/300	2025					
TE125	14-16					
TE125	2025					
TE150	17-19					
TE150i	20-25					
TE250	14-18					
TE250i	18-25					
TE300	14-18					
TE300i	18-25					
TX300	17-25					
FE250-501	14-25					
FC250-450						
FX350/450	17-25					
SHERCO (FOURCHE WP)	YEARS	DIAMETER	BLACK	BLUE	RED	ORANGE
125SE/SER	12-21	58,4mm	SLC503BK	SLC503BL	SLC503RD	SLC503
250/300 SER						
250-450 SEFR						
SHERCO (FOURCHE KYB)	YEARS	DIAMETER	BLACK	BLUE	RED	ORANGE
125-300 SE / SER	18-25	53,4mm	SLC100BK	SLC100		
250 SEF / SEFR						
300 SEF / SEFR						
450 SEF / SEFR						
HUSABERG	YEARS	DIAMETER	BLACK	BLUE	RED	ORANGE
FE250	09-14	58,4mm	SLC503BK	SLC503BL	SLC503RD	SLC503
FE350						
FE501						
FX450						
TE250						
TE300						

TM	YEARS	DIAMETER	BLACK	BLUE	RED	ORANGE
125MX/EN	15-25	53,4mm	SLC100BK	SLC100		
144MX/EN						
250MX/EN						
300MX/EN						
450MX/EN						
OHLINS	YEARS	DIAMETER	BLACK	BLUE	RED	ORANGE
OHLINS	20-25	58,4mm	SLC503BK	SLC503BL	SLC503RD	SLC503
GAS GAS	YEARS	DIAMETER	BLACK	BLUE	RED	ORANGE
MC-E5/MC50	21-25	43mm	SLC500BK			
MC65						
MC85						
MC125						
MC150/300						
MC250						
MC250F	21-25					
MC350F	22-25					
MC450F	21-25					
EC125	2025					
EC250/300	21-25					
EC250F/350F	21-25					
EC450F/500F	24-25					
EX250/300	21-25					
EX250F-450F	21-25					
FANTIC	YEARS	DIAMETER	BLACK	BLUE	RED	ORANGE
XX125/XE125	21-25	53,4mm	SLC100BK	SLC100		
XX250	22-25					
XXF250/450						
XEF250 /450						
BETA	YEARS	DIAMETER	BLACK	BLUE	RED	ORANGE
RR125	18-25	53,4mm	SLC100BK	SLC100		
RR200	19-25					
RR250-480	16-25					
STARK FUTURE	YEARS	DIAMETER	BLACK	BLUE	RED	ORANGE
Varg	23-24	56,4mm	SLC201BK	SLC201B	SLC201R	
TRIUMPH	YEARS	DIAMETER	BLACK	BLUE	RED	ORANGE
TF 250-X	24-25	53,4mm	SLC100BK	SLC100		

## HOLESHOT DEVICE REPLACEMENT BUTTON



- › Replacement button for Scar Launch Control system
- › CNC machined and anodised

COLOUR	PART
Black	SLCB1
Blue	SLCB2

COLOUR	PART
Red	SLCB3
Orange	SLCB4

# AXLE PULL

- › For fast and easy wheel removal
- › Just grab the handle and pull — no more struggling
- › Mounts in seconds
- › Slide the handle into the blind end (non-threaded) of the axle and tighten the split-bevel expansion anchor
- › Made of durable billet aluminum



## FRONT AXLE PULL

KTM	YEARS	BLUE	RED	ORANGE
125-450 SX/SXF	15-25	FAP500BL	FAP500RD	FAP500
125-500 EXC/EXCF				
125-450 XC				
250-450 XCF				
125/250/300 XCW				
450 XCFW				
350/500 XWF				
HUSQVARNA	YEARS	BLUE	RED	ORANGE
125-450 TC/FC	15-25	FAP500BL	FAP500RD	FAP500
125-501 TE/FE	16-25			
TX300	17-25			
FX 350/450				
SHERCO	YEARS	BLUE	RED	ORANGE
125 SE/SER	18-25	FAP600		
250/300 SE/SER	12-25			
250/300/450 SEF./SEFR				
BETA	YEARS	BLUE	RED	ORANGE
RR 125/200	19-25		FAP700	
RR 250-480	12-25			
XTRAINER 250	17-25			
XTRAINER 300	15-25			
GAS GAS	YEARS	BLUE	RED	ORANGE
MC125	21-25	FAP500BL	FAP500RD	FAP500
MC150/300	2025			
MC 250	22-25			
MC250F	21-25			
MC350F	22-25			
MC450F	21-25			
EC 125	2025			
EC250/300	21-25			
EC250F/350F	21-25			
EC450F/500F	2025			
EX250/300	21-25			
EX250F-450F	21-25			

## REAR AXLE PULL + AXLE BLOCKS

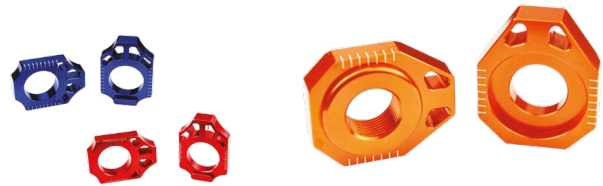
SHERCO	YEARS	BLUE
125SER	18-23	RAP600+AB601
250/300 SER	12-23	
250/300/450 SEFR	12-23	

## REAR AXLE PULL

KTM	YEARS	BLUE	RED	ORANGE	BLACK
125-450 SX/SXF	03-12	RAP500BL	RAP500RD	RAP500	
125-500 EXC/EXCF	03-23				
125SX	23-25				
150SX	2025				
250-450SX/SXF	23-25				
125-450XC/XCF	23-25				
125-500 EXC/EXCF	24-25				
300-500 EXC 6 DAYS/EXCF 6 DAYS	24-25				
125 XCW	2025				
125-500 XCW/XWF	24-25				
HUSQVARNA	YEARS	BLUE	RED	ORANGE	BLACK
TC85	2014	RAP500BL	RAP500RD	RAP500	
TC125	14-15				
TC250	14-16				
FC250/450	2014				
FC350	14-15				
125-501 TE/FE	14-23				
TC125/250	23-25				
TC150/300	2025				
FC250-450	23-25				
TE125	2025				
150-501 TE/FE	24-25				
TX300/FX350/FX450	23-25				
SHERCO	YEARS	BLUE	RED	ORANGE	BLACK
125SE/SER	18-23	RAP600			
250/300 SE/SER	12-23				
250/300/450 SEF./SEFR	12-23				
BETA	YEARS	BLUE	RED	ORANGE	BLACK
RR 125/200	19-25	RAP500BL	RAP500RD	RAP500	
RR 250-480	12-25				
XTRAINER 250	17-25				
XTRAINER 300	15-25				
GAS GAS	YEARS	BLUE	RED	ORANGE	BLACK
EC250/300	21-23	RAP500BL	RAP500RD	RAP500	
EC250F/350F	21-23				
MC125/250	24-25				
MC150/300	2025				
MC250F/350F/450F	24-25				
EC125	2025				
EC250/300 EC250F-500F	24-25				
EX250/300 EX250F-450F	24-25				

# AXLE BLOCKS

- › CNC machined
- › Reverse and forward positions
- › Precision axle alignment
- › Anodised blue, red, orange or black



YAMAHA	YEARS	BLUE	RED	ORANGE	BLACK
YZ125/250	02-25	AB100			
YZ125X	17-25				
YZ250X	16-25				
YZ250FX	15-24				
YZ250FX	2025	AB102			
YZ450FX	16-23	AB100			
YZ450FX	2025	AB102			
YZ250F	02-08	AB100			
YZ250F	12-25	AB102			
YZ450F	03-08	AB100			
	10-25	AB102			
WR250F	02-24	AB100			
WR250F	2025	AB102			
WR450F	04-24	AB100			
WR450F	24-25	AB102			
WR250R/X	07-20	AB100			
HONDA	YEARS	BLUE	RED	ORANGE	BLACK
CR125R/250R	02-07		AB201		
CRF250X	04-17				
CRF450X	05-25				
CRF250R	04-25				
CRF450R	02-25				
CRF250RX	19-25				
CRF450RX	17-25				
CRF450L	19-20				
CRF450RL	21-23				
KAWASAKI	YEARS	BLUE	RED	ORANGE	BLACK
KX125/250F	03-08	AB301B	AB301		
KX250F	04-18				
KX250/450	19-25				
KX450F	06-18				
KX250X/450X	21-25				
SUZUKI	YEARS	BLUE	RED	ORANGE	BLACK
RMZ250	04-25	AB301B	AB301		
RMZ450	05-25				
RMX450Z	10-19				
KTM	YEARS	BLUE	RED	ORANGE	BLACK
65SX	02-15			AB501	
85SX	02-14	AB502B	AB502RD	AB502	
85SX	2025				
125-450SX/SXF	02-12				
450SMR					
125EXC	02-20				
150EXC TPI	20-23				
250EXC	02-23				
250EXC TPI	18-23				

KTM	YEARS	BLUE	RED	ORANGE	BLACK
300EXC	02-23	AB502B	AB502RD	AB502	
300EXC TPI	18-23				
250-500EXCF	02-23				
125-450SX/SXF	13-22	AB503B		AB503	
125XC	21-22				
150XC	13-14				
250XC	08-19				
250/300XC TPI	20-22				
300XC	07-19				
250-450XCF	13-22				
125-450SX/SXF	23-25				AB504BK
150SX	2025				
250-450 SX/SXF	23-25				
125-450 XC/XCF	23-25				
125-500 EXC/EXCF	24-25				
300-500EXC 6 DAYS					
125XCW	2025				
250/300 XCW	24-25				
450 XCFW					
350/500 XWF					
HUSQVARNA	YEARS	BLUE	RED	ORANGE	BLACK
TC85	2014	AB502B	AB502RD	AB502	
TC85	2025				
TC125/250	14-15				
TC250	14-16				
FC350/450	14-15				
TE125	14-16				
TE150	17-23				
TE150i	20-23				
TE250/300	14-23				
TE250i/300i	18-23				
TC250	14-22				
FE250-501	14-22				
TC125	16-22	AB503B		AB503	
TC250	17-22				
FC250-450	16-22				
FX350/450	17-22				
TC125/250	23-25				AB504BK
TC150/300	2025				
FC250-450	23-25				
TE125	2025				
TE150-300	24-25				
FE250-501	24-25				
TX300	23-25				
FX350/450	23-25				

## AXLE BLOCKS CONT'D

SHERCO	YEARS	BLUE	RED	ORANGE	BLACK
125SE/SER	18-23	AB601			
250/300SE/SER	14-23				
250SEF/SEFR	08-23				
300SEF/SEFR	08-23				
450SEF/SEFR	09-23				
125/500SM	20-23				
GAS GAS	YEARS	BLUE	RED	ORANGE	BLACK
MC85	2025	AB502B	AB502RD	AB502	
MC125	21-23	AB503B		AB503	
MC250/350F	22-23				
MC250F/450F	21-23				

GAS GAS	YEARS	BLUE	RED	ORANGE	BLACK
EC250/EC300	21-23	AB502B	AB502RD	AB502	
EC250F/350F	21-23				
MC125/250	24-25				AB504BK
MC150/300	2025				
MC250F-450F	24-25				
EC125	2025				
EC250-500F	24-25				
EX250/300					
EX250-450F					
FANTIC	YEARS	BLUE	RED	ORANGE	BLACK
XX125	21-25	AB100			
XE125	21-25				

## ENGINE PLUGS

- › CNC machined
- › Anodised blue, red or orange



YAMAHA	YEARS	BLUE	RED	ORANGE
YZ250F	14-25	EP101		
YZ450F	10-22	EP101		
	23-25	EP102		
YZ250FX/ WR250F	15-25	EP101		
YZ450FX/ WR450F	16-23	EP101		
YZ450FX/ WR450F	24-25	EP102		
HONDA	YEARS	BLUE	RED	ORANGE
CRF150R	07-25		EP200	
CRF230R	03-17			
CRF250R	10-17			
CRF450R	02-25			
CRF450X	05-17			
CRF450RX	17-25			
CRF1000L	16-19			
CRF1100L AFRICA TWIN	2020			
XR250/BAJA/MOTARD	95-07			
XR400MOTARD	05-08			
TRX400EX	00-08			
TRX450R/ER	04-09			
CRF250R	18-25		EP201	
CRF250RX/250F	19-25			
CRF150L	18			
KAWASAKI	YEARS	BLUE	RED	ORANGE
KX250F	11-18	EP300B	EP300	
KX250	19-24			
KX450F	09-18			
KX450	19-25	EP300B	EP300	
KLX450R	08-15			
KX250X/KX450X	21-25			

SUZUKI	YEARS	BLUE	RED	ORANGE
RMZ250	07-25		EP400	
RMZ450	05-25			
RMX450Z	10-19			
KTM	YEARS	BLUE	RED	ORANGE
250/350 SXF	11-25			EP500
250/350 EXCF	12-25			
450SXF	07-12			
	23-25			
250/350 EXC	12-18			
450SMR	08-12			
690ENDURO	10-22			
FREERIDE 250F	18-19			
FREERIDE350	14-17			
690SMC R	08-22			
990SM R/T	10-13			
990ADVENTURE	13-18			
1090 ADVENTURE	2019			
1190ADVENTURE	13-18			
1290 SUPER ADVENTURE	17-22			
790 ADVENTURE	19-22			
390 DUKE	13-16			
690 DUKE	08-19			
790 DUKE	19-22			
990 DUKE	08-19			
1290 SUPER DUKE	14-19			
1190RC8	08-15			
250XCF	11-25			
350XCF	12-25			
450XCF	23-25			
250XCFW	12-16			
350XCFW	12-22			

# OIL FILLER PLUGS

- › CNC machined
- › Anodised blue, red or orange



YAMAHA	YEARS	BLUE	RED	ORANGE
YZ65	18-25	OFP100B	OFP100R	
YZ85	98-25			
YZ125	94-25			
YZ250	99-25			
YZ250F	01-25			
YZ450F	03-25			
YZ125X	17-25			
YZ250X	16-25	OFP100B	OFP100R	
WR250F/450F	03-25			
WR250R	07-25			
YZ250FX	15-25			
YZ450FX	16-25			
TTR230	05-17			
TW200	87-17	OFP100B	OFP100R	
YFZ450	04-09			
SEROW250	05-20		OFP400	
TRICKER	04-18			
XT250X	06-17			
HONDA	YEARS	BLUE	RED	ORANGE
CRF150R	07-22	OFP100B	OFP100R	
CR125R/250R	90-07			
CRF250L	13-19			
CRF250R	04-17			
	18-25		OFP200	
CRF450R	02-16	OFP100B	OFP100R	
	21-25		OFP200	
CRF250RX	19-25			
CRF450RX	21-25			
CRF450RWE	21-25			
CRF450X	05-09	OFP100B	OFP100R	
CB300R	19-21			
CB500F	14-22			
CBR1000S	16-22			
CBR500R	13-22			
CMX300	18-22			
CMX500	18-21			
CBR600RR	03-21			
CBR1000RR	04-21			
CRF250L/M	12-19			
CRF250RALLY	17-19			
CRF1000L	16-19			
KAWASAKI	YEARS	BLUE	RED	ORANGE
KX250	05-08	OFP300B	OFP300	
KX250F	04-18			
KX250/450	19-25			
KX450F	06-18			
KLX450R	08-15			
KX250X/450X	21-25			
KFX450R	08-09			

KAWASAKI	YEARS	BLUE	RED	ORANGE
KLX250	93-12	OFP100B	OFP100R	
D-TRACKER	98-12			
SUZUKI	YEARS	BLUE	RED	ORANGE
RM85	01-24		OFP400	
DRZ125	03-19			
RM125	01-08			
RM250	01-08			
GSXR600	04-18			
GSXR750	04-19			
GSXR1000	03-18			
Hayabusa	99-17			
RMZ250	04-06		OFP300	
RMZ250	07-25		OFP400	
RMZ450	05-25			
RMX450Z	10-19		OFP400	
LTR450	06-09			
KTM	YEARS	BLUE	RED	ORANGE
50-450 SX/SXF	06-25	OFP500B	OFP500RD	OFP500
125-500 EXC/EXCF/TPI				
125/300 XC				
250-450 XCF				
250/300 XCW				
450 XCFW				
350/500 XWF				
690 DUKE	08-19			
690 DUKE R	10-17			
690 ENDURO R	14-19			
690 SUPERMOTO	08-09			
690 SMC	08-11			
690 SMC R	12-22			
HUSQVARNA	YEARS	BLUE	RED	ORANGE
TC50/65	17-25	OFP500B	OFP500RD	OFP500
TC85/TE125	14-25			
TE150	17-25			
TE150i	20-25	OFP500B	OFP500RD	OFP500
TE250/300	14-25			
TE250i/TE300i	18-25			
TX300	17-25			
FE250/350/450/501	14-25			
TC125/250	14-25			
TC150/300	2025			
FC250/350/450	14-25			
FX350/450	17-25			
FS450	15-25			
701 ENDURO/SUPERMOT	16-22			
SHERCO	YEARS	BLUE	RED	ORANGE
125SE / SER	18-25	OFP500B	OFP500RD	OFP500
250SE / SER	14-25			



# OIL FILLER PLUGS CONT'D

SHERCO	YEARS	BLUE	RED	ORANGE
300SE / SER	14-25	OFF500B	OFF500RD	OFF500
250SEF / SEFR	08-25			
300SEF / SEFR	08-25			
450SEF / SEFR	08-25			
HUSABERG	YEARS	BLUE	RED	ORANGE
FE250/350/501	96-14	OFF500B	OFF500RD	OFF500
FX450				
TE250/300				
GAS GAS	YEARS	BLUE	RED	ORANGE
MC50/65/85/125	21-25	OFF500B	OFF500RD	OFF500
MC 250	22-25			
MC150/300	2025			
MC250F / MC450F	22-25			
MC350F	22-25			

GAS GAS	YEARS	BLUE	RED	ORANGE
EC125	2025	OFF500B	OFF500RD	OFF500
EC250/300	21-25			
EC250F/350F	21-25			
EC450F/500F	24-25			
EX250/300	21-25			
EX250-450F	21-25			
FANTIC	YEARS	BLUE	RED	ORANGE
XX125 / XE125	21-25	OFF100B	OFF100R	
XX/XXF250/XXF450	22-25			
XE125	21-25			
XEF250/450	22-25			
TRIUMPH	YEARS	BLUE	RED	ORANGE
TF 250-X	24-25	OFF100B	OFF100R	

# MAGNETIC OIL DRAIN PLUG

- > Manufactured from 7075 T6 aluminium
- > Magnetic tip removes metal particles from the engine oil
- > Drilled head to allow for locking wire
- > Anodised finish to resist corrosion
- > Direct replacement for OEM oil drain plug"



YAMAHA	YEARS	BLUE	RED	ORANGE	BLACK
YZ125	05-25	MODP100			
YZ125X	17-25				
YZ250F	01-25				
YZ450F	03-25				
WR250F	01-25				
WR450F	04-25				
YZ250FX	15-25				
YZ450FX	16-25				
YFZ450R	09-25				
KAWASAKI	YEARS	BLUE	RED	ORANGE	BLACK
KX250/450	21-25				MODP301
KX250X/450X	21-25				
KTM	YEARS	BLUE	RED	ORANGE	BLACK
50SX/65X	09-25	MODP500BL	MODP500RD	MODP500	
85SX	18-25				
125-300 SX	03-25				
250-450 SXF					
125-300 EXC					
150-300EXC TPI					
250-500 EXCF					

KTM	YEARS	BLUE	RED	ORANGE	BLACK
125/300 XC	03-25	MODP500BL	MODP500RD	MODP500	
250-450 XCF					
250/300 XCW					
450 XCFW					
350/500 XWF					
HUSQVARNA	YEARS	BLUE	RED	ORANGE	BLACK
TC50/65/85	18-25	MODP500BL	MODP500RD	MODP500	
TE125-300	14-25				
TE150i-300i					
TX300					
FE250-501					
TC125/250					
FC250-450					
FX350/450					
FS450					
GASGAS	YEARS	BLUE	RED	ORANGE	BLACK
MC 50-125	21-25	MODP500BL	MODP500RD	MODP500	
MC150/300	2025				
MC250	22-25				
MC250F-450F	21-25				

# MAGNETIC OIL DRAIN PLUG CONT'D

GASGAS	YEARS	BLUE	RED	ORANGE	BLACK
EC125	2025	MODP500BL	MODP500RD	MODP500	
EC250/300	21-25				
EC250F/350F	21-25				
EC450F/500F	24-25				
EX250/300	22-25				
EX250F/450F	21-25				
EX350F	22-25				

FANTIC	YEARS	BLUE	RED	ORANGE	BLACK
XX125	21-25	MODP100	MODP100		
XXF250	22-25				
XXF450	22-25				
XE125	21-25				
XEF250	22-25				
XEF450	22-25				

## BRAKE CLEVIS

- › Eliminates play in the OEM brake pedal
- › Rigid yet lightweight design
- › Superior rear brake control



YAMAHA	YEARS	BLUE	RED
YZ65	18-25	BC102B	
YZ85	94-25		
SEROW250	05-20		
TRICKER	04-18		
XT250	06-20		
RAPTOR700	06-25		
RAPTOR250	08-13		
RAPTOR350	04-13		
YFZ450R	09-25		
YFZ450	06-17		
YZ125	03-25	BC101B	BC101R
YZ250	03-25		
YZ250F	03-25		
YZ450F	03-25		
WR250F	03-25		
WR450F	03-25		
WR250X	03-17		
WR250R	03-20		
YZ125X	17-25		
YZ250X	16-25		
YZ250FX	15-25		
YZ450FX	16-25		
HONDA	YEARS	BLUE	RED
CR125R/250R	02-07		BC201R
CRF150R	07-25		
CRF250R	04-25		
CRF450R	02-25		
CRF250X	04-17		
CRF450X	05-25		

HONDA	YEARS	BLUE	RED		
CRF250RX	19-25		BC201R		
CRF450RX	17-25				
CRF250F	19-25				
CRF450L	19-20				
CRF450RL	21-25				
CRF450RW	24-25				
KAWASAKI	YEARS			BLUE	RED
KX85	98-24				BC401R
KX125	03-08				
KX250	03-04				
KLX125	10-16				
KLX150S	09-13				
KLX150L	15-18				
KLX250	93-20				
D-TRACKER125	10-16				
D-TRACKER	98-16				
KX65	03-21	BC301B	BC301R		
KX250	05-08				
KX250F	04-18				
KX250/450	19-25				
KX450F	06-18				
KLX450R	08-15				
KFX450R	08-10				
KX250X/450X	21-25				
KLX300R	20-25				
SUZUKI	YEARS			BLUE	RED
RM85	98-20		BC401R		
RM125/250	01-13				
DRZ400S/R	00-19				

SUZUKI	YEARS	BLUE	RED		
DRZ400SM	04-19		BC401R		
LT-R450	06-09				
RMZ250	07-25				
RMZ450	05-25				
RMX450Z	10-19	BC101B	BC101R		
BETA	YEARS			BLUE	RED
RR125	13-25			BC301B	BC301R
RR200	19-25				
RR250	13-25				
RR300	13-25				
RR350	13-25				
RR390	13-25				
RR430	13-25				
RR480	13-25				
X-TRAINER 250	17-25				
X-TRAINER 250	15-25				
FANTIC	YEARS	BLUE	RED		
XX125	21-25	BC101B	BC101R		
XX250	22-25				
XXF250	22-25				
XXF450	22-25				
XE125	21-25				
XEF250	22-25				
XEF450	22-25				

## BRAKE LINE CLAMP

- › Aluminium with high quality anodised finish
- › Factory look and lightweight



HONDA	YEARS	BLUE	RED		
CR125R	04-07	BLC100B	BLC100R		
CR250R	04-07				
CRF250R	04-25				
CRF450R	04-25				
CRF250RX	19-25				
CRF450RX	17-25				
CRF250X	06-17				
CRF450X	05-17				
CRF150L	18				
CRF250L/M*	12-20				
CRF250RALLY*	17-20				
YAMAHA	YEARS			BLUE	RED
YZ65	18-25			BLC100B	BLC100R
YZ85	19-25				
YZ125	09-25				
YZ250	09-25				
YZ250F	09-25				
YZ450F	09-25				
YZ125X	17-25				
YZ250X	16-25	BLC100B	BLC100R		
YZ250FX	15-25				
YZ450FX	16-25				

KAWASAKI	YEARS	BLUE	RED
KX65	00-25	BLC300B	BLC300R
KX80	89-20		
KX85	89-25		
KX100	89-25		
KX125/250	92-08		
KX250F	04-18		
KX250	19-25		
KX450F	06-18		
KX450	19-25		
KX250X	21-25		
KX450X	21-25		
KLX450R	08-15		
KLX125	10-16		
D-TRACKER125	10-16		
KLX150BF	16-17		
SUZUKI	YEARS	BLUE	RED
RM85	02-17	BLC300B	BLC300R
RM125/250	01-13		
RMZ250	04-25		
RMZ450	05-25		
RMX450Z	10-20		
DRZ400SM	04-20		

FANTIC	YEARS	BLUE	RED
XX125	21-25	BLC100B	BLC100R
XX250	22-25		
XXF250	22-25		
XXF450	22-25		
XE125	21-25		
XEF250	22-25		
XEF450	22-25		

## RESERVOIR COVERS

- › Lightweight and durable
- › Anodised blue, red or orange



### FRONT BRAKE RESERVOIR COVER

YAMAHA	YEARS	BLUE	RED	ORANGE	BLACK
YZ65	18-25	1801B	1801		
YZ85	03-25				
YZ125	02-07				
YZ250	02-07				
YZ250F	02-06				
YZ450F	02-07				
WR250F	02-16				
WR450F	04-15				
YZ125/250	08-25	3801			
YZ250F	07-25				
YZ450F	08-25				
YZ125X	17-25				

### FRONT BRAKE RESERVOIR COVER

YAMAHA	YEARS	BLUE	RED	ORANGE	BLACK
YZ250X	16-25	3801			
YZ250FX	15-25				
YZ450FX	16-25				
WR250F	17-25				
WR450F	16-25				
HONDA	YEARS	BLUE	RED	ORANGE	BLACK
CR85R	98-07		2801		
CRF125F	14-25				
CRF150R	07-25				
CR125R	96-07				
CR250R	96-07				
CRF150F	03-17				

### FRONT BRAKE RESERVOIR COVER

HONDA	YEARS	BLUE	RED	ORANGE	BLACK
CRF230F	03-17		2801		
CRF250F	19-25				
CRF250R	04-25				
CRF450R	02-25				
CRF250X	04-17				
CRF450X	05-25				
CRF250RX	19-25				
CRF450RX	17-25				
CRF450L	19-20				
MONKEY125	19-21				
CRF450RL	21-25				

# RESERVOIR COVERS CONT'D

## FRONT BRAKE RESERVOIR COVER

KAWASAKI	YEARS	BLUE	RED	ORANGE	BLACK
KX65/100	01-25	1801B	1801		
KX85	98-25				
KX125/250	93-08				
KX250F	04-20				
KX450F	06-18				
KLX450R	08-15				
KLX300R	20				
KX250	21-25		2801		
KX450	19-23				
KX250X	21-25				
KX450X	21-23				
SUZUKI	YEARS	BLUE	RED	ORANGE	BLACK
RM85	94-19	1801B	1801		
RM125	04-08				
RM250	04-08				
RMZ250	04-25				
RMZ450	05-25				
RMX450Z	10-19				
KTM	YEARS	BLUE	RED	ORANGE	BLACK
65/105SX	04-11			4801	
85SX	03-12				
65SX	14-22			5802	
85SX	13-20				
FREERIDE 250F	18-20				
FREERIDE 250R	14-17				
FREERIDE 350	14-17				
125-250 SX	05-25	5801B	5801RD	5801	5801BK
250-450SXF	05-25				
125EXC	05-25				
150EXC TPI	20-25				
250EXC	05-25				
250EXC TPI	18-25				
300EXC	05-25				
300EXC TPI	18-25				
250-500EXCF	05-25				
125-500 XC/XCF/XCW/XCFW	06-25				
HUSQVARNA	YEARS	BLUE	RED	ORANGE	BLACK
TE125-300	14-17	5801B	5801RD	5801	5801BK
FE250-501	14-17				
TC125/250	14-25 not18	5801B	5801RD	5801	5801BK
TC150/300	2025				
FC250-450	14-25 not18				
TX300	22-25				
FX350/450					
TE125-300	2025				
FE250-501	2025				
TX125	18-21	5804B			
TE150	18-19				

## FRONT BRAKE RESERVOIR COVER

HUSQVARNA	YEARS	BLUE	RED	ORANGE	BLACK
TE150i	20-21	5804B			
TE250/300	2018				
TE250i	18-21				
TE300i	18-21				
TX300	18-21				
FE250-501					
FX350/450					
SHERCO	YEARS	BLUE	RED	ORANGE	BLACK
125SE/SER	10-25	5801B	5801RD	5801	5801BK
250SE/SER					
300SE/SER					
250SEF/SEFR					
300SEF/SEFR					
450SEF/SEFR					
HUSABERG	YEARS	BLUE	RED	ORANGE	BLACK
FE250	04-14	5801B	5801RD	5801	5801BK
FE350					
FE501					
FX450					
TE250					
TE300					
TM	YEARS	BLUE	RED	ORANGE	BLACK
85JUNIOR	20-25	5801B	5801RD	5801	5801BK
144MX/EN					
250MX/EN					
300MX/EN					
450MX/EN					
GAS GAS	YEARS	BLUE	RED	ORANGE	BLACK
MC125/250	21-22	5801B	5801RD	5801	5801BK
MC250F	21-22				
MC350F	22-22				
MC450F	21-22				
FANTIC	YEARS	BLUE	RED	ORANGE	BLACK
XX125/XE125	21-25	3801			
XX250	22-25				
XXF250					
XXF450					
XEF250					
XEF450					
TRIUMPH	YEARS	BLUE	RED	ORANGE	BLACK
TF250-X	24-25	5801B	5801RD	5801	5801BK
BETA	YEARS	BLUE	RED	ORANGE	BLACK
RR125/200	19-25		2801		
RR250	13-25				
RR300	13-25				
RR350	08-25				
RR390	08-25				
RR430	08-25				
RR480	08-25				
XTRAINER250	17-25				
XTRAINER300	15-25				

## REAR BRAKE RESERVOIR COVER

YAMAHA	YEARS	BLUE	RED	ORANGE	BLACK
YZ65	18-25	1901			
YZ125/250	03-25				
YZ250F/450F	03-25				
YZ125X	20-25				
YZ250X	16-25				
YZ250FX	15-25				
YZ450FX	16-25				
WR250F	03-25				
WR450F	04-25				
WR250R	07-25				
TRICKER	04-18				
SEROW250	05-18				
XT250	08-24				
XT250X	06-17				
WR250X	07-17				
HONDA	YEARS	BLUE	RED	ORANGE	BLACK
CRF150R	07-25		2901		
CR125R/250R	02-07				
CRF250R	04-25				
CRF450R	02-25				
CRF250X	04-17				
CRF450X	05-25				
CRF250RX	19-25				
CRF450RX	17-25				
CRF450L	19-20				
CRF250F	19-25				
CRF450RL	21-25				
KAWASAKI	YEARS	BLUE	RED	ORANGE	BLACK
KX125/250	03-08	3901B	3901		
KX250F	04-18				
KX250/450	19-25				
KX450F	06-18				
KLX450R	08-19				
KFX450R	08-10				
KLX230R/300R	20-25				
KX250X	21-25				
KX450X	21-25				
SUZUKI	YEARS	BLUE	RED	ORANGE	BLACK
RM125/250	04-08	3901B	3901		
RMZ250	04-25				
RMZ450	05-25				
RMX450Z	10-17				
KTM	YEARS	BLUE	RED	ORANGE	BLACK
50SX	06-25			5900	
SX-E	20-21				
65SX	04-25				
85SX	03-25				
FREERIDE 250F	18-20				
FREERIDE 250R	14-17				
FREERIDE 350	12-17				

# RESERVOIR COVERS CONT'D

## REAR BRAKE RESERVOIR COVER

KTM	YEARS	BLUE	RED	ORANGE	BLACK
125-300 SX	04-25	5901B		5901	5901BK
250-450SXF					
125EXC					
150EXC	23-25				
150EXC TPI	20-25				
250EXC	04-25				
250EXC TPI	18-25				
300EXC	04-25				
300EXC TPI	18-25				
250EXCF	04-25				
350EXCF					
450EXCF					
500EXCF					
125XC	21-25				
150XC	10-14				
200XC	06-09				
250XC	06-19				
250/300XC TPI	20-22				
300XC	06-25				
250XCF	07-25				
350XCF	12-25				
450XCF	08-25				
125XCW	2025				
150XCW	17-25				
200-300XCW	06-25				
450XCW	07-16				
500XCW	12-16				
250XCFW	07-16				
350XCFW	12-21				
450XCFW	2023				
500XCFW	2021				
HUSQVARNA	YEARS	BLUE	RED	ORANGE	BLACK
TE125-300	14-17	5901B		5901	5901BK
FE250-501					
TC125/250	14-25 not 18				
TC150/300	2025				
TC250	14-25 not 18				
FC250-450					
TX300	22-25				
FX350/450					
TE125-300	2025				
FE250-501					
SHERCO	YEARS	BLUE	RED	ORANGE	BLACK
125SE / SER	10-25	5901B		5901	5901BK
250SE / SER					
300SE / SER					
250SEF / SEFR					
300SEF / SEFR					
450SEF / SEFR					

## REAR BRAKE RESERVOIR COVER

HUSABERG	YEARS	BLUE	RED	ORANGE	BLACK
FE250-501	09-14	5901B		5901	5901BK
FX450					
TE250/300					
TM	YEARS	BLUE	RED	ORANGE	BLACK
125MX/EN	15-25	1901			
144MX/EN					
250MX/EN					
300MX/EN					
450MX/EN					
FANTIC	YEARS	BLUE	RED	ORANGE	BLACK
XX125/XE125	21-25	1901			
XX250	22-25				
XXF250/450					
XEF250/450					
STARK FUTURE	YEARS	BLUE	RED	ORANGE	BLACK
Varg	23-25	5901B		5901	5901BK
TRIUMPH	YEARS	BLUE	RED	ORANGE	BLACK
TF 250-X	24-25	5901B		5901	5901BK
CLUTCH RESERVOIR COVER					
KTM	YEARS	BLUE	RED	ORANGE	BLACK
65SX	14-22			5803	
85SX	13-20				
FREERIDE	14-17				
125/150SX	16-25	5801B	5801RD	5801	5801BK
250SX	06-25				
300SX	23-25				
250SXF	07-25				
350SXF	10-25				
450SXF	13-25				
150EXC	23-25				
150EXC TPI	20-25				
250EXC	06-25				
250EXC TPI	18-25				
300EXC	06-25				
300EXC TPI	18-25				
250EXCF	06-25				
350EXCF	12-25				
450EXC	07-22				
450EXCF	07-25				
500EXC	07-22				
500EXCF	07-25				
25-500 XC/XCF/XCW/XCFW	13-25				
HUSQVARNA	YEARS	BLUE	RED	ORANGE	BLACK
FC250-450	14-15	5801B	5801RD	5801	5801BK
TE150-300	14-16				
FE250-501	14-16				
TC125	14-21	5805B			
TC125/250	22-25	5801B			

## CLUTCH RESERVOIR COVER

HUSQVARNA	YEARS	BLUE	RED	ORANGE	BLACK
TC150/300	2025	5801B			
TC250	17-21	5805B			
FC250-450	16-21	5805B			
FC250-450	22-25	5801B			
TX300	22-25	5801B			
FX350/450	22-25	5801B			
TE125	14-16	5805B			
TE125/300	2025	5801B			
FE250-501					
TX125/150	17-21	5805B			
TE150i	20-21				
TE250/300	17-18				
TE250i	18-21				
TE300i	18-21				
TX300	17-21				
FE250-501					
FX350-450					
SHERCO	YEARS	BLUE	RED	ORANGE	BLACK
125SE/SER	15-25	5801B	5801RD	5801	5801BK
250SE/SER					
300SE/SER					
250SEF/SEFR					
300SEF/SEFR					
450SEF/SEFR					
BETA	YEARS	BLUE	RED	ORANGE	BLACK
RR125/200	19-25	5801B	5801RD	5801	5801BK
RR250/300	13-25				
RR350	12-25				
RR390					
RR430					
RR480					
XTRAINER250	17-25				
XTRAINER300	15-25				
TM	YEARS	BLUE	RED	ORANGE	BLACK
85JUNIOR	10-25	5801B	5801RD	5801	5801BK
144MX/EN					
250MX/EN					
300MX/EN					
450MX/EN					
GAS GAS	YEARS	BLUE	RED	ORANGE	BLACK
MC125	21-22	5801B	5801RD	5801	5801BK
MC250	22-22				
MC250F	21-22				
MC350F	22-22				
MC450F	21-22				
TRIUMPH	YEARS	BLUE	RED	ORANGE	BLACK
TF 250-X	24-25	5801B	5801RD	5801	5801BK

# REAR BRAKE RESERVOIR COOLING EXTENSION

- > Increases the amount of brake fluid in rear reservoir
- > Helps with brake fading issues
- > CNC machined
- > Easy to install, can be fitted in seconds
- > Comes complete with rubber gasket
- > Anodised finish to help resist corrosion



YAMAHA	YEARS	BLACK
125-450 SX/SXF	04-25	RBCE500
125EXC		
150EXC	23-25	
150EXC TPI	20-25	
250/300 EXC	04-25	
250/300 EXC TPI	18-25	
250-500 EXCF	04-25	
125/300 XC		
250-450 XCF		
125XCW	2025	
250/300 XCW	04-25	
450 XCFW		
350/500 XWF		

HUSQVARNA	YEARS	BLACK
TE125-300	14-17	RBCE500
FE250-501		
TE150-300	23-24	RBCE505
FE250-501		
TC125-250	14-25 not 2018	RBCE500
FC250-450		
TC150/300	2025	
TX300	22-25	
FX350-450		
TE125-300	2025	
FE250-501		

SHERCO	YEARS	BLACK
125-300 SE/SER	10-25	RBCE500
250-450SEF/SEFR		
HUSABERG	YEARS	BLACK
FE250/501/350	09-14	RBCE500
FX450		
TE250/300		
GASGAS	YEARS	BLACK
MC125	21-22	RBCE500
MC250/350F	2022	
MC250F/450F	21-22	
MC150/300	2025	RBCE505
MC125/250	24-25	
MC250F/450F		
EC125	2025	
EC250/300	21-24	
EC250F-350F		
EC450F/500F	24-25	
EX250/300	21-25	
EX250F-450F		
STARK FUTURE	YEARS	BLACK
Varg	24-25	RBCE500
TRIUMPH	YEARS	BLACK
TF 250-X	24-25	RBCE500

# STEERING NUT

- > CNC Machined steering stem nut and bolt
- > Pre-drilled for safety wire
- > Anodised for lasting finish with laser-etched logo
- > Fits OEM and Scar Triple Clamps



YAMAHA	YEARS	COLOUR	PART	
YZ65	18-25	BLUE	322100N	
YZ85	94-25			
TRICKER	04-18			
SEROW250	05-20			
XT250X	06-17			
TTR50	07-17			
TTR110	08-17			
TTR125	02-17			
TRICKER	04-18			
XTZ125	03-17			
TENERE700	20-24			
YZ125	94-25	BLUE		324100N
YZ250	94-25			
YZ125X	17-25			
YZ250X	16-25			
YZ250F	01-25			
YZ450F	03-25			

YAMAHA	YEARS	COLOUR	PART
YZ250FX	15-25	BLUE	324100N
YZ450FX	16-25		
WR250F	01-25		
WR450F	04-25		
HONDA	YEARS	COLOUR	PART
XR50R	99-17	BLUE	322100N
CRF50F	99-17		
CR85R	96-08	BLUE	324100N
CRF150R	07-25		
XR230/MOTARD	05-12		
XR250/MOTARD	03-07		
XR400/MOTARD	05-08		
CRF230F	03-19		
CRF250F	19-24		
CRM50/80	88-99		
CRM250R	89-96		
MONKEY125	19-21		

# STEERING NUT CONT'D

HONDA	YEARS	COLOUR	PART	
CRF150L	18	BLUE	324100N	
CRF250L/M	12-20			
CRF250RALLY	17-20			
CRF1000L AFRICA TWIN	16-19			
CRF1100L AFRICA TWIN/DCT	2020			
CRF1100L AFRICA TWIN ADV SPORTS ES/DCT	2020			
XR250/BAJA	95-07			
CR125R	01-07	RED	426100N	
CR250R	01-07			
CRF250R	04-25			
CRF450R	02-25			
CRF250X	04-17			
CRF450X	05-25			
CRF250RX	19-25			
CRF450RX	17-25			
CRF450L	19-20			
CRF450RL	21-25			
KAWASAKI	YEARS	COLOUR	PART	
KX65	00-25	BLUE	322100N	
KX85	01-25			
KX100	95-25			
KX125	88-91			
KLX110/L	02-20			
KLX125, D-TRACKER125	10-16			
KLX150BF	16			
KLX150S	09-			
KLX250/ D-TRACKER	98-20			
KLX300R	97-20			
KX125	04-08	BLUE		324150N
KX250	04-08			
KX250F	04-18			
KX250	19-25			

KAWASAKI	YEARS	COLOUR	PART
KX450F	06-18		
KX450	19-25		
KLX450R	08-09		
KX250X	21-25		
KX450X	21-25		
SUZUKI	YEARS	COLOUR	PART
RM85	02-25	BLUE	322100N
250SB	02-06		
V-STROM250	17-20		324100N
RM125	04-13	BLUE	
RM250	04-13		
RMZ250	07-25		
RMZ450	05-25		
RMX450Z	10-19		
KTM	YEARS	COLOUR	PART
50SX	06-25	ORANGE	320150N
SX-E 5	20-25		
65SX	06-25		
85SX	06-25		
125-450 SX/SXF	03-25	ORANGE	520150N
125-500 EXC/EXCF			
125/300 XC			
250-450 XCF			
250/300 XCW			
450 XCFW			
350/500 XWF			
FANTIC	YEARS	COLOUR	PART
XX125 / XE125	21-25	BLUE	324100N
XX250	22-25		
XXF250/XXF450			
TRIUMPH	YEARS	COLOUR	PART
TF 250-X	24-25	ORANGE	520150N

# FRONT AXLE BOLT

› Lighter and stronger than OEM



KTM	YEARS	COLOUR	PART
85SX	12-25	ORANGE	5.20150N
125-450 SX/SXF	15-25		
125EXC	16		
150EXC TPI	20-25		
250/300EXC	16-25		
250/300EXC TPI	18-25		
250-500 EXCF	16-25		
125XC	21-25		

KTM	YEARS	COLOUR	PART
300XC	15-25	ORANGE	5.20150N
250/350/450XCF	15-25		
125XCW	2025		
250XCW	15-25		
300XCW	15-25		
450XCFW	20-25		
350XWF	24-25		
500XWF	24-25		

# CLUTCH CABLE GUIDE

- › Eliminates OEM cable guide 'play'
- › Lighter and stronger than OEM
- › Anodised in red or blue



YAMAHA	YEARS	BLUE	RED
WR250F	01-14	CCG100	
YZ250F	01-13	CCG100	
YZ450F	10-13	CCG101	
KAWASAKI	YEARS	BLUE	RED
KX450F	06-15	CCG300B	CCG300

HONDA	YEARS	BLUE	RED
CRF250R	10-13		CCG200
CRF450R	09-14		CCG201
CRF450R	15-16		CCG203

# WHEEL SPACERS

- › Lightweight and more durable than OEM
- › Front and rear spacer pairs sold separately
- › Anodised blue, red or orange



## FRONT WHEEL SPACERS

YAMAHA	YEARS	COLOUR	PART	
YZ125/250	08-25	BLUE	FWS101	
YZ125X	17-25			
YZ250X	16-20			
YZ250F	07-13			
YZ450F	08-13			
HONDA	YEARS	COLOUR	PART	
CR125/250R	02-07	RED	FWS201	
CRF250/450R	02-25			
CRF250RX	19-25			
CRF450RX	17-25			
CRF450L	19			
CRF450X	19-25			
CRF450RL	21-25			
KAWASAKI	YEARS	COLOUR		PART
KX125/250	06-08	RED		FWS301
KX250F	06-20			
KX450F	06-18			
SUZUKI	YEARS	COLOUR	PART	
RMZ250	07-25	RED	FWS401	
RMZ450	05-25			
RMX450Z	10-19			
KTM	YEARS	COLOUR	PART	
125-450 SX/SXF	03-14	ORANGE	FWS501	
125-500 EXC/EXCF	03-14			
200XC	06-09			
250/300XC	06-14			
250XCF	07-14	ORANGE		
350XCF	12-14			
450XCF	08-14			

## FRONT WHEEL SPACERS

KTM	YEARS	COLOUR	PART
200/250/300XCW	06-15		FWS502
400XCW	07-10		
450XCW/ 250XCFW	07-15		
500XCW/ 350XCFW	12-15		
690 ENDURO	10-21		
125-450 SX/SXF	15-25	ORANGE	
125-500 EXC/EXCF/TPI	16-25		
125XC	21-25		
250XC	18-19		
250/300XC TPI	20-22		
300XC	17-25		
250/350/450XCF	15-25		
150XCW	17-25		
250/300XCW	16-25		
450XCFW	23-25		
FANTIC	YEARS	COLOUR	PART
XX125 FANTIC	21-24	BLUE	FWS101
XE125 FANTIC	21-24		

## REAR WHEEL SPACERS

YAMAHA	YEARS	COLOUR	PART
YZ250/450F	09-25	BLUE	RWS101
YZ250FX/WR250F	2025	BLUE	
YZ450FX/WR450F	24-25		
HONDA	YEARS	COLOUR	PART
CR125/250R	02-07	RED	RWS201
CRF250R	04-25		
CRF450R	02-25		
CRF250X	04-17		
CRF450X	04-25		



# WHEEL SPACERS CONT'D

## REAR WHEEL SPACERS

HONDA	YEARS	COLOUR	PART
CRF250RX	19-25	RED	RWS201
CRF450RX	17-25		
CRF450L	19-20		
CRF450RL	21-25		
KAWASKI	YEARS	COLOUR	PART
KX250F	04-25	RED	RWS301
KX450F	06-25		
KLX450R	08-09		
SUZUKI	YEARS	COLOUR	PART
RMZ250	07-25	RED	RWS401
RMZ450	05-25		
RMX450Z	10-17	RED	RWS401
KTM	YEARS	COLOUR	PART
85SX	12-25	ORANGE	RWS501
125-450 SX/SXF	03-12		
125-500 EXC/EXCF/TPI	03-23		
150XC	10-13		
200XC	06-09		
250/300XC	06-12		
250XCF	07-12		
150XCW	17-23		
200XCW	06-16		
250/300XCW	06-23		
450XCW/ 250XCFW	07-16		
500XCW	12-16		
350XCFW	12-21		
450XCFW	2023		
500XCFW	2021		

## REAR WHEEL SPACERS

KTM	YEARS	COLOUR	PART
125-450 SX/SXF	13-22	ORANGE	RWS502
125XC	21-22		
250XC	13-19		
250/300XC TPI	20-22		
300XC	12-19		
250/350XCF	13-22		
450XCF	13-21		RWS503BK
125-450 SX/SXF	23-25	BLACK	
150SX	2025		
125-450 XC/XCF	23-25		
150-500 EXC/EXCF	24-25		
125XCW	2025		
250-450 XCW/XCFW	24-25		RWS503BK
350/500 XWF			
HUSQVARNA	YEARS	COLOUR	PART
TC125/250	23-25	BLACK	RWS503BK
TC150/300	2025		
FC 250-450	23-25		
TX300			
FX350/450			
TE150-300	24-25		RWS503BK
FE250-501			
GASGAS	YEARS	COLOUR	PART
MC125/250   MC250-450F	24-25	BLACK	RWS503BK
MC150/300	2025		
EC125	2025		
EC250/300   EC250-500F	24-25		
EX250/300   EX250-450F			

# FUEL MIXTURE SCREW

› Fuel mixture screw to fit Keihin FCR

YAMAHA	YEARS	BLACK	RED	BLUE
YZ250F	01-13	FMS101	FMS102	FMS103
YZ450F	00-09			
WR250F	01-13			
WR400F	00-09			
WR426F	00-09			
WR450F	00-09			
HONDA	YEARS	BLACK	RED	BLUE
CRF150R	07-23	FMS101	FMS102	FMS103
CRF250R	04-09			
CRF250X	04-12			
CRF450R	02-08			
CRF450X	05-12			

- › CNC machined aluminium with high quality anodised finish
- › Numerically calibrated

KAWASAKI	YEARS	BLACK	RED	BLUE
KX250F	04-10	FMS101	FMS102	FMS103
KX450F	06-08			
KLX450R	08-10			
SUZUKI	YEARS	BLACK	RED	BLUE
RMZ250	04-09	FMS101	FMS102	FMS103
RMZ450	05-07			
KTM	YEARS	BLACK	RED	BLUE
250/450/505 SXF	03-11	FMS101	FMS102	FMS103
250/400/450/525/530EXC	03-11			
250EXCF	03-11			
450SMR	03-11			

## UNIVERSAL EXHAUST HEAT PROTECTOR

- › Universal 4 stroke fitment
- › Stainless steel construction
- › Fits exhaust pipe diameters from 27mm to 51mm
- › Dimensions: 193 x 59mm
- › Perfect for aftermarket pipes that are not supplied with heat shields
- › Comes with all mounting hardware (2 clamping collars serflex type)

PART	UHP
------	-----



## ALUMINIUM VENT CAP

- › CNC machined aluminium with high quality anodised finish
- › Short black hose replaces long and bulky stock vent hose
- › Fits all hose-vented fuel caps

COLOUR	PART
Black	S7001
Blue	S7002
Red	S7003
Orange	S7004

COLOUR	PART
Green	S7005
Gold	S7006
Titanium	S7007



## ALUMINIUM WASHERS

- › Lightweight drilled works style aluminum washers
- › For use with M6 bolts

OUTSIDE DIAMETER	PART
18mm (10 pieces)	SWASH18
25mm (10 pieces)	SWASH25



## HOUR METER

- › Monitor service intervals
- › Suitable for all motorcycles
- › Connects to spark plug — no need for battery
- › Easy installation

COLOUR	PART
Black	HM
Blue	HMBL

COLOUR	PART
Red	HMR
Orange	HMOR



Note: Not available in USA

## WIRELESS VIBRATION HOUR METER

- › Wireless, works by vibrations
- › Suitable for all motorcycles
- › Partial counter reset — total hours cannot be reset
- › Resolution: 0.1 hours
- › Waterproof IP68

COLOUR	PART
Black	SWHM
Blue	SWHMBL

COLOUR	PART
Red	SWHMR
Orange	SWHMOR



## HOUR METER MOUNT BRACKET

- › Securely mounts your hour meter
- › Fixes to accessible fuel tank bolt
- › Mounting hardware included

PART	BHM
------	-----



# WORKSHOP



## WP COMPRESSION VALVE REMOVAL TOOL

- › Special 2-in-1 compression valve removal tool for WP CC 48 and 4CS
- › CNC Machined
- › Anodised for lasting finish



KTM	YEARS	FORK	PART
125-250SX	15-16	WP(4CS)	RCV5
125-250SX	17-25	WP	
300SX	23-25	WP	
250-450SX-F	15-16	WP(4CS)	
250-450SX-F	17-25	WP	
125-300EXC 6DAYS	13-16	WP(4CS)	
250-500EXC-F 6DAYS	13-16	WP(4CS)	
250-300EXC	14-16	WP(4CS)	
250-300EXC	17-25	WP	
250-450EXC-F	14-16	WP(4CS)	

KTM	YEARS	FORK	PART
250-450EXC-F	17-25	WP	RCV5
HUSQVARNA	YEARS	FORK	
TC125-250	14	WP	
TC125-250	15-16	WP(4CS)	
TC125-250	17-25	WP	
FC250-450	14	WP	
FC250-450	15-16	WP(4CS)	
FC250-450	17-25	WP	
TE125-300	14-16	WP(4CS)	

HUSQVARNA	YEARS	FORK	PART
FE250-501	14-16	WP(4CS)	RCV5
TX300	17-25	WP	
FX350-450	17-25	WP	
701ENDURO	17-18	WP(4CS)	
GAS GAS	YEARS	FORK	
MC125	21-25	WP	
MC150/300	2025	WP	
MC250	22-25	WP	
MC250F/MC450F	21-25	WP	
MC350F	22-25	WP	

# FORK CAP WRENCH

- › Specialist wrenches for disassembling Kayaba, Showa and WP forks
- › Manufactured from stainless steel and aluminium (Kayaba) and steel (WP and Showa)



## KAYABA FORK CAP WRENCH 49mm

YAMAHA	YEARS	PART
YZ125/250	06-25	SCFK
YZ250/450F	06-25	
YZ250X / YZ450FX	16-25	
YZ250FX	15-25	
YZ125X	17-25	
WR250F	15-25	
WR450F	13-25	
HONDA	YEARS	
CRF450R	09-14	
KAWASAKI	YEARS	
KX250	20-25	
KX250X	21-25	
KX450F	06-14	
SUZUKI	YEARS	
RMZ250	16-25	
GAS GAS	YEARS	
EC250/300	18-20	
XC250/300	18-20	
ENDURO GP 250/300	18-20	
SHERCO	YEARS	
125/250/300SE FACTORY	19-25	
250/300/450SEF FACTORY	19-25	
FANTIC	YEARS	
XX125/XE125	21-25	
XX250/XXF250/XXF450	22-25	
XEF250/XEF450	22-25	

## SHOWA/OHLINS FORK CAP WRENCH 50mm

HONDA	YEARS	PART
CRF250R	04-25	CFS
CRF450R	04-08	
CRF450R	17-25	
CRF250RX	19-25	
CRF450RX	17-25	
CRF250X	06-17	
CRF450X	05-25	
CRF450L	19-20	
CRF450RL	21-25	
CRF450R	17-25	
KAWASAKI	YEARS	
KX250F	06-19	
KX450F	15-18	
K450	19-25	
KX450X	21-25	
SUZUKI	YEARS	
RMZ250	07-15	
RMZ450	05-25	
RM125	06-08	
RM250	07-08	
RMX450Z	10-17	
DRZ400SM	05-17	
OHLINS		
OHLINS		

## WP FORK CAP WRENCH 50mm

KTM	YEARS	PART
125SX	07-25	CFWP
150SX	09-25	
250SX	07-25	
300SX	23-25	
250SXF	07-25	
350SXF	11-25	
450SXF	07-25	
125EXC	17-22	
250/300EXC	17-25	
150EXC TPI	17-22	
150/250EXC	23-25	
250/300EXC TPI	18-22	
300EXC	23-25	
250/350/450/500EXCF	17-25	
125/250/300XC		
250-450XC-F		
125-300XC-W		
HUSQVARNA	YEARS	
TC125/250	17-25	
TC150/300	2025	
FC250/350/450	17-25	
TX125/300		
TE125/150/250/300		
TE150i/250i/300i		
FE250/350/450/501		
FX 350/450		
HUSABERG	YEARS	
ALL		
GAS GAS	YEARS	
MC125	21-25	
MC150/300	2025	
MC250	22-25	
MC250F/450F	21-25	
MC350F	22-25	
EC125	2025	
EC250/300	21-25	
EC250F/350F	21-25	
EC450F/500F	24-25	
EX250	22-25	
EX300	21-25	
EX 250F/350F/450F	21-25	

## DIGITAL FORK AIR PUMP

- › Large digital LCD display
- › Universal swivel valve for fatbar and standard bar access
- › Flexible hose attached to a 360 degree pivot system
- › Micro adjust air bleed button
- › 0.5psi/1.0psi increments below/above 100psi
- › 0-300psi/0-20.69 bar operating range
- › psi, bar, kg/cm2 pressure scales
- › Auto start and auto shut off



HONDA	YEARS	PART
CRF250R	15-16	DFAP
CRF450R	13-16	
KAWASAKI	YEARS	
KX450F	13-18	
SUZUKI	YEARS	
RMZ250	16-18	
RMZ450	15-17	

KTM	YEARS	PART
125/150SX	16-25	DFAP
250SX	17-25	
300SX	23-25	
250/350/450SXF	16-25	
50/65SX	17-25	
85SX	18-25	
125XC	21-23	
250XC	18-22	
300XC/250/450XCF	17-23	
350XCF	17-24	

HUSQVARNA	YEARS	PART
TC125/250	17-25	DFAP
TC150/300	2025	
FC250/350/450	17-24	
TC50/65/85	18-25	
TX300	17-25	
FX350/450	17-25	
GAS GAS	YEARS	
MC50/65/85/125	21-25	
MC150/300	2025	
MC250	22-25	
MC250F/450F	21-25	
MC350FE	22-25	
EX250	2023	
EX300   EX250-450F	21-23	

## FORK AIR BLEEDER VALVES

- › Easily bleed air from forks — push button operation
- › High quality anodised
- › Easy installation



MODEL	COLOUR	PART
WP / Marzocchi (M4*0.7)	Orange	S8001
	Black	S8006
	Blue	S8007
WP AER (M8*1) (M4*0.7)	Black	S8008

MODEL	COLOUR	PART
Showa / Kayaba (M5*0.8)	Black	S8002
	Blue	S8003
	Red	S8004
	Green	S8005

## AIR VALVE PULLER AND AIR VALVE CORE REMOVAL

- › Useful during tyre changes and flat repairs
- › Easy to pull the air valve stem through the hole on the rim
- › Air valve puller head may also be used for air valve core removal



PART	AVPCR

## ADJUSTABLE LIFT STAND

- › Hydraulic damper
- › Height adjustable 25cm-35cm
- › Designed for small and big bikes
- › Safety hold hook system
- › Black powder coat finish
- › Maximum lifting weight: 200 kg

PART S9902



## BIKE STAND 404

- › Machined aluminium
- › Sturdy, ultra light
- › Delivered with sponsor plate
- › Can be dismantled

PART S9901



## SCAR DISPLAY STAND

- › High quality PoS display stand
- › Measures 177 x 70 x 35cm

PART SDPL



## SPOKE WRENCH KIT

- › Main shaft is CNC precision machined from aluminium
- › Interchangeable tips to fit 10 sizes of spoke nipples
- › Tips are made of heat treated steel for strength
- › Kit contains 5mm / 5,4mm / 5,6mm / 5,8mm / 6mm / 6,2mm / 6,4mm / 6,6mm / 6,8mm / 7mm

PART SSWK





# CASUAL

## SCAR BEANIE

- › 100% Acrylic
- › Color : Navy

NEW



PART SBEAN103

## SCAR CAP

- › Classic Trucker/Snapback
- › SCAR logo design at front
- › Colors : Navy/White



PART SCAP101

## SCAR T-SHIRT

- › Durable construction that keeps it's shape
- › Ultra-soft texture and feel

SIZE	PART
9-11 Years	STEEF10
12-13 Years	STEEF12
XS	STEEFXS
S	STEEFS
M	STEEFM
L	STEEFL
XL	STEEFXL
XXL	STEEFXXL



## SCAR HAT

- › Straw hat
- › Drawstring closure
- › One size fits most
- › Wide brim



PART STHAT102

## SCAR UMBRELLA

- › High quality umbrella
- › Diameter 130cm open
- › Automatic open



PART SUMBL

## SCAR KEYRING

- › High quality TPR keyring



PART SKRING

# GLOBAL DISTRIBUTORS

## AUSTRIA

AUNER GmbH  
Traiskirchner Straße 4,  
2511 Pfaffstätten,  
Austria

## BOSNIA AND HERZEGOVINA

PRO CROSS SHOP D.O.O  
Ulica Relje Krilatice bb,  
78000 Banja Luka,  
Republika Srpska

## BULGARIA

BOBI MX  
Sevlievo,  
Stoyan Bachvarov St 4,  
Bulgaria

## CHINA

WUYI CHUANGMEI SPORTING GOODS  
CO., Ltd  
Wuyi County, Jinhua City,  
321200 Zhejiang

## CZECH REPUBLIC

MTZ MOTOTECHNIKA s.r.o.  
U Blatenského mostu 1482,  
386 01 Strakonice,  
Czech republic

## EUROPE

HOCO PARTS BV  
Harselaarseweg 104,  
3771 MB Barneveld  
The Netherlands

## EUROPE

PARTS EUROPE  
Conrad-Röntgen-Straße 2,  
54332 Wasserliesch,  
Germany

## EUROPE

BIHR  
7 Rue Robert Schuman,  
68870 Bartenheim,  
France

## FINLAND/NORWAY/SWEDEN

DUELL BIKE CENTER OY  
Kauppatie 19  
65610 Mustasaari  
Finland

## GREECE

DK RACING  
Dimitrakopoulou 92,  
Athina 117 41,  
Greece

## GUATEMALA

MOTOLAB  
Km 17.5 Carretera a El Salvador,  
Arrazola 2 y 3 Lote 58 Casa 7  
Fraijanes,  
Guatemala

## ISRAEL

YARIMI RACING  
Bar Yohay 9,  
Tel Aviv,  
Israel

## ITALY

RINOLFI  
Via Liguria, 3,  
61122 Pesaro PU,  
Italy

## ITALY

NRTEAM-DAST SRL  
Strada Antolini 2/TER,  
43044 Lemignano di Collecchio (PR)  
Italy

## LATVIA

MAX MOTO  
Brivibas gatve 224,  
Vidzemes priekšpilseta,  
Riga, LV-1039, Latvia

## POLAND

OLEK MOTOCYKLE  
43-382 Bielsko-Biala  
ul. Relaksowa 20  
Poland

## RUSSIA

PILOT MOTO  
ul. Nakhimova, 11,  
Sankt-Peterburg,  
Russia, 199226

## SOUTH KOREA

MRK MOTORRAD  
125, Gaun-ro,  
Namyangju-si,  
Gyeonggi-do

## SPAIN

BIHR IBERIA  
N-340a, 4,  
30850 Totana, Murcia,  
Spain

## SWITZERLAND

BIHR SWISS  
Route de la Plaine 45,  
1580 Avenches,  
Suisse

## THE NETHERLANDS

TECHNO MOTOR VEGHEL  
Eisenhowerweg 8,  
5466 AC Veghel,  
Netherlands

## UNITED KINGDOM

ORO2U  
2, Ddole Road Enterprise Park,  
Ddole Rd,  
Llandrindod Wells LD1 6DF  
Wales, United Kingdom



ZA de Kéneah-Ouest  
10 Rue de Belle-Ile  
56400 Plougoumelen  
France  
T. 00 33 (0)9 51 78 87 65  
E. info@scar-racing.com  
scar-racing.com